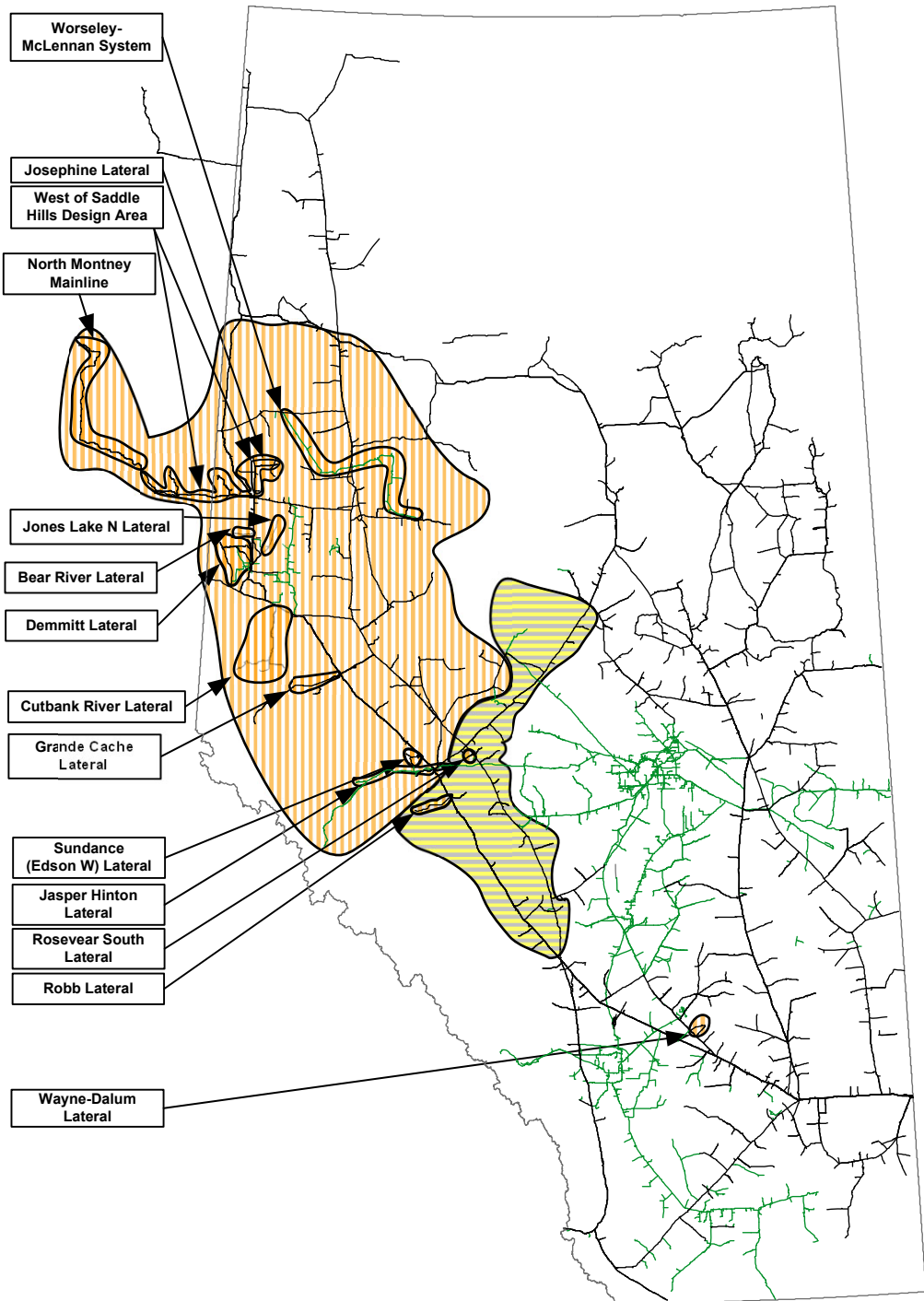


TC Energy's NGTL System FT-R Availability Map

Note: The areas identified on this map are either Approaching Contract Capacity or Fully Contracted (see definitions below). Please consult the [TC Customer Express](#) page for the latest date this map was reviewed for accuracy. Please contact your Marketing Representative for clarification or additional information.

Approaching Contract Capacity*  + 95%
Fully Contracted Areas** 



- Fully Contracted Laterals:**
- Bear River Lateral
 - Bear River West
 - Cutbank River Lateral
 - Bilbo
 - Copton Creek
 - Copton Creek No 2
 - Cutbank River
 - Cutbank River North
 - Musreau Lake
 - Musreau Lake No 2
 - Musreau Lake North
 - Musreau Lake North No 2
 - Musreau Lake West
 - Narraway River
 - Nose Mountain
 - Demmitt Lateral**
 - Brainard Lake
 - Demmitt
 - Goodfare
 - Hythe
 - Grande Cache Lateral**
 - Bolton Creek APGC
 - Jayar APGC
 - Prairie Creek APGC
 - Jasper Hinton Lateral**
 - Fishnet APN
 - Fishnet B APN
 - Hargwen APN
 - Hinton APN
 - McLeod River APN
 - Medicine Lodge APN
 - South Carrot APN
 - Sundance Creek APN
 - Josephine Lateral**
 - Fourth Creek
 - Fourth Creek West
 - Whitburn East
 - North Montney Mainline**
 - Aitken Creek South
 - Aitken Creek West No. 2
 - Altars
 - Altares South
 - Blair Creek
 - Gundy
 - Gundy West
 - Kobes
 - Mackie Creek North
 - Old Alaska
 - Townsend Summary
- Fully Contracted Laterals (cont.):**
- Robb Lateral**
 - Mitchell Creek
 - Robb
 - Rosevear South Lateral**
 - Rosevear South
 - Sundance (Edson W) Lateral**
 - Sundance Creek
 - Sunvalley
 - Wayne-Dalum Lateral**
 - Wayne-Dalum
 - West of Saddle Hills Design Area**
 - Fourth Creek
 - Fourth Creek West
 - Whitburn East
 - Bay Tree
 - Bonanza Summary
 - Dawson Creek
 - Dawson Creek East Summary
 - Dawson Creek North Summary
 - Doe Creek
 - Doe Creek South
 - Doe Creek South No. 2
 - Fourth Creek
 - Fourth Creek West
 - Gordondale Border
 - Gordondale East
 - Groundbirch
 - Groundbirch East
 - Henderson Creek
 - Livingstone Creek
 - Livingstone Creek No. 2
 - Saturn
 - Saturn No. 2
 - Tower Lake
 - Tremblay No. 2
 - Tremblay No. 3
 - Tremblay Summary
 - Whitburn East
 - Worsley-McLennan System**
 - Grimshaw APWM

Note: Segments 1 & 3 have been removed from the Approaching Contract Capacity bubble.



Approaching Contract Capacity*	Contracts are greater than 95% of the area or facility capability.
Fully Contracted**	Area is fully contracted. Firm Transfers allowed within restricted area as per the hydraulic evaluation. New requests for Firm Transportation service will be held pending availability of Area capacity. For additional information refer to the Informational Postings on Customer Express, Project Area Receipt and Delivery Capacity Update.
Capacity within any portion of the NGTL System can become fully contracted at any time and without prior notice. NGTL encourages customers to review their future FT requirements to ensure their FT levels align with their expected flow requirements.	
For segment locations, please refer to the NGTL Segment Map: https://www.tccustomerexpress.com/assets/NGTL_Segment_Codes_Map_Feb2025.pdf	