



Customer Training and Update Session

October 8th & 9th, 2013



Customer Service – Nominations & Allocations

Commercial Services - Customer Service

- Functions
 - Contracts, Nominations, Volume Planning, Allocations, Measurement, Billing, Customer Call Centre
- 7 pipelines
 - Mainline, NGTL, Foothills Zone 8, Foothills Zone 9, Portland, TQM and Ventures
 - Transportation by others, Great Lakes, Union, TQM, Ventures, ATCO, Alliance
- 65 staff
- 7 days x 15 hour coverage x 365



Customer Service Processes

26,090 Contracts



96 Nomination Cycles/d
3,500 nominations/d

Over 600 Customers



Exposure Calcs

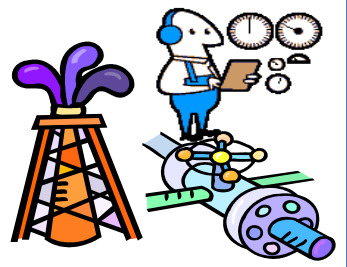
Validate

Invoice = \$3.1 B

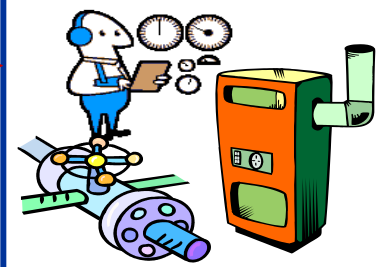
- Nominations
- Confirmations
- Measurement
- Allocations

- Nominations
- Confirmations
- Measurement
- Allocations

1012 Receipt Pts



Over 400 Delivery Pts



Manage Imbalances



IT Bid Process and Floor Changes

IT Bid Process and Floor Changes as of July 1, 2013

- Timing and Shipper Notification of Changes to Bid Floors
- Nomination Status Change (Transportation Summary Report)
- New Bid Floor and Fuel Ratio Report

Minimum IT Bid Rates may be altered on any NAESB cycle:

- Timely (09:00 CCT)
- Evening (09:00 CCT)
- Intra-Day 1 (17:00 CCT)
- Intra-Day 2 (21:00 CCT)

TransCanada retains the right to modify the IT Bid Floor prices and may do so up to a minimum of 3 hours before the nomination deadline for all gas days and cycles.

Timelines by Nomination Window in Sequence

Cycle	Bid Toll Change / Re-Validation	Nomination Deadline	Bid Toll Change / Re-Validation Time	Nomination Deadline
	Mountain Time	Mountain Time	Eastern Time	Eastern Time
ID1 (17:00)	6:00	9:00	8:00	11:00
Timely (09:00)	8:00	11:00	10:00	13:00
ID2 (21:00)	13:00	16:00	15:00	18:00
Evening (09:00)	14:00	17:00	16:00	19:00

NrG Non-Critical Notification

- When the floor price on a path(s) is changed, a generic NrG Notice is published indicating a change has been made to a specific gas day and cycle.
- The NrG IT Bid Notification can be subscribed to via the NrG Notice Preference module in the NrG Highway with a valid user id and password.

NrG Notice Preferences

NrG Home Contact Us


TransCanada Mainline

CUSTOMER ACTIVITIES

- Nominations
 - Nominations
 - Up/Down Contracts
 - Waivers
- Notifications
 - Notifications
 - Notice Preferences**
- Reporting
 - TransCanada Reporting
 - NrG Reporting
- Capacity Bulletin Board
- Administration
 - User Admin
 - Facilities Admin
 - Notice Admin

INFORMATIONAL POSTINGS

- Site Map





Notice Preferences

Save

Personal Information

Company: NrG Helpdesk

Name: Mr. Shipper ABC

Business Phone: (403) 920-7473 Business Fax:

Off-site Phone: (403) 920-7473 Off-site Fax:

Cellular Phone: Pager:

E-mail Address: shipper@abc.ca

Settings by Module

Service Provider: TransCanada PipeLines Limited

[Bulletins](#) | [Confirmation Noms](#) | [Nominations - Shipper To Transporter](#)

NOTE: Only enter an address or telephone number in the blank fields if different to that displayed in the Personal Information section

Bulletins				Top
Capacity Constraint	<input checked="" type="checkbox"/>	E-mail		
Capacity Discount	<input checked="" type="checkbox"/>	E-mail		
Curtailement	<input checked="" type="checkbox"/>	E-mail		
Force Majeure	<input checked="" type="checkbox"/>	E-mail		
Great Lakes Capacity Release	<input checked="" type="checkbox"/>	E-mail		
IT Bid Rate	<input checked="" type="checkbox"/>	E-mail		
Maintenance	<input checked="" type="checkbox"/>	E-mail		
Open Season	<input checked="" type="checkbox"/>	E-mail		
Operational Flow Order	<input checked="" type="checkbox"/>	E-mail		
Other	<input checked="" type="checkbox"/>	E-mail		
Phone List	<input type="checkbox"/>	E-mail		
Press Release or Company News	<input type="checkbox"/>	E-mail		
Tolerance Change	<input checked="" type="checkbox"/>	E-mail		



Canadian Mainline – IT Bid Rate Status

- Nominations now submitted prior to the 3 hour deadline go into a new status of PREACCEPTED on reports if they pass the Bid Rate criteria at that point in time.
- Approximately 3 hour's before the nomination deadline, nominations will be re-validated with the IT Bid Rate in effect to verify whether the nomination meets the minimum floor price requirement of that particular cycle.
- Customers may run their Transportation Summary or Daily Transportation Account Detail report to ensure their nomination status has updated from PREACCEPTED to ACCEPTED status.

Customer Operational Reporting



Report Created: 2013/06/05 14:37

By: ARI_SUPT /

TransCanada
Transportation Summary Report

Gas Day: 20130608

Requestor:
Gas Day Window: End of Gas Day
Unit of Measure:GJ

Account Name	Receipt Location	Delivery Location	Service	Bid Price	Nominated Quantity	Authorized Quantity	Variance	Status	Primary Delivery Location
	Empress	Emerson 2	IT	1.2397	100	0	100	PreAccepted	

[Details](#)

Failed Nominations Status

Based on Bid Price a nomination may Fail for 2 reasons:

1. Nomination is sent anytime prior to the nomination deadline and the nominated price is less than the current toll in effect for that cycle.

- i. Status quo process and no change in existing validations. The nomination will fail directly back to NrG with Failed Edits as the updated status.

2. Nomination is sent prior to the 3 hour Bid Toll change deadline, Pre-Accepted, and subsequently re-validated after a toll change.

- i. The nomination status will update to Failed Edits, however this status will only be available to be viewed via the Transportation Summary report. The nomination will not fail back to NrG Highway.

It is up to the shipper to ensure that a valid nomination is in place after the bid validation 3 hours prior to the nomination deadline has occurred.

New IT Bid Floor and Fuel Ratio Report

- A new report available via TransCanada's Mainline Customer Express web site has been created to allow a customizable search for IT Floor price and Fuel Ratios.

<http://itbidfloors.transcanada.com/>

- This report combines the ability to request information by gas day/cycle, or a historical range which reflects any time when a floor price or fuel ratio was modified.

New IT Bid Floor and Fuel Ratio Report



- ▶ [TransCanada Home](#)
- ▶ [Subscribe](#)

UpdateMagazine
Keeping Customers Connected

CUSTOMER EXPRESS HOME | CAPACITY | PRICING & TOLLS | SERVICES & TARIFFS | **PIPELINES** | CONTACT US | SEARCH:

Customer Express Home » Pipelines » Canadian Mainline Printer-Friendly Page

Pipelines

Canada

[NGTL System](#)

Canadian Mainline

- ▶ [Customer Activities](#)
- ▶ [Informational Postings](#)
- ▶ [Service Offerings](#)
- ▶ [Regulatory Information](#)
- ▶ [Industry Committee](#)
- ▶ [Contacts](#)
- ▶ [Site Map](#)

[Foothills System](#)

[Trans-Quebec and Maritimes Pipeline](#)

USA

[ANR Pipeline Company \(ANR\)](#)

[Bison Pipeline](#)

[Gas Transmission Northwest System](#)

[Great Lakes Gas Transmission System](#)

Canadian Mainline

System Operations

[Gas Day Summary Report](#)

[Notices - All | Critical | Non-Critical](#)

[Open Season](#)

[TransCanada's NrG Highway *](#)

[TransCanada Reporting *](#)

[Mainline Operational Status Bulletin](#)

* Requires a User Id and Password

Rates

2013 - 2017 Approved Mainline Tolls effective July 1, 2013

[PDF](#) [XLS](#)

[Tolls Archive](#)

[IT Bid Floors and Fuel Ratios](#)

[IT Bid Tolls and Fuel Ratios Archive](#)

[Summer 2013 Fuel Ratios](#) (14 KB, PDF)

[Winter 2012/13 Fuel Ratios](#) (15 KB, PDF)

Reports

[Alberta Border Heat Values](#)

[CDE Report](#)

[Credit and Financial Procedures](#) (98 KB, PDF)

[On-line Billing Service](#)

[Valid Alternate Receipt Points \(8.5" x 14"\)](#)

The Pipeline

[Front Line IMs](#)

[Organizational Chart](#)

[Procedures](#)

[Mainline STFT and IT Frontline Presentation \(June 2013\)](#)



New IT Bid Floor and Fuel Ratio Report



Search IT Bid Floors And Fuel

Search By Gas Day and Cycle

Gas Day:

Cycle:

OR

Search Gas Day Range

From Gas Day:

To Gas Day:

Format:

ServiceTypes

- BHI
- FH
- STS

- Receipt Locations:
Select multiple locations
by using Shift / Ctrl
- Emerson 2
 - Empress**
 - Enbridge CDA
 - Enbridge EDA
 - GMIT EDA
 - GMIT NDA
 - Grand Coulee
 - Herbert
 - Iroquois
 - KPUC EDA

- Delivery Locations:
Select multiple locations
by using Shift / Ctrl
- Transgas SSSDA
 - Union CDA
 - Union EDA
 - Union NCDA
 - Union NDA
 - Union SSSMDA
 - Union SWDA
 - Union WDA
 - Vic Square #2 CDA
 - Welwyn

Submit



New IT Bid Floor and Fuel Ratio Report

TransCanada Pipelines Limited IT Bid Floors and Fuel

Gas Day / Cycle: 2013-Jun-17 09:00 Timely

Receipt Location: Empress

Delivery Location: All

Service Type	Receipt Location	Delivery Location	Cycle	Begin Date	End Date	Load Factor (%)	Bid Floor (\$/GJ)	Fuel Ratio (pressure)
FH	Empress	Bayhurst 1	Timely	2013-Jun-15 09:00	2013-Jun-25 09:00	120	0.4544	0.54
FH	Empress	Bayhurst 2	Timely	2013-Jun-15 09:00	2013-Jun-25 09:00	120	0.4544	0.54
FH	Empress	Centram MDA	Timely	2013-Jun-15 09:00	2013-Jun-25 09:00	120	0.8162	0.91
FH	Empress	Centram SSDA	Timely	2013-Jun-15 09:00	2013-Jun-25 09:00	120	0.4544	0.54
FH	Empress	Centrat MDA	Timely	2013-Jun-15 09:00	2013-Jun-25 09:00	110	0.7482	0.91
FH	Empress	Chippawa	Timely	2013-Jun-15 09:00	2013-Jun-25 09:00	110	2.4653	3.64
FH	Empress	Cornwall	Timely	2013-Jun-15 09:00	2013-Jun-25 09:00	110	2.5155	2.86
FH	Empress	Dawn Export	Timely	2013-Jun-15 09:00	2013-Jun-25 09:00	110	2.0862	2.39
FH	Empress	East Hereford	Timely	2013-Jun-15 09:00	2013-Jun-25 09:00	110	2.9520	3.35
FH	Empress	Emerson 1	Timely	2013-Jun-01 09:00	2013-Jun-25 09:00	90	0.6973	1.18
FH	Empress	Emerson 2	Timely	2013-Jun-01 09:00	2013-Jun-25 09:00	90	0.6973	1.16
FH	Empress	Enbridge CDA	Timely	2013-Jun-15 09:00	2013-Jun-25 09:00	110	2.4672	2.80
FH	Empress	Enbridge EDA	Timely	2013-Jun-15 09:00	2013-Jun-25 09:00	110	2.4672	2.80
FH	Empress	Enbridge SWDA	Timely	2013-Jun-15 09:00	2013-Jun-25 09:00	110	2.0823	2.39
FH	Empress	GMIT EDA	Timely	2013-Jun-15 09:00	2013-Jun-25 09:00	170	3.8129	2.80
FH	Empress	GMIT NDA	Timely	2013-Jun-15 09:00	2013-Jun-25 09:00	170	2.9617	2.18
FH	Empress	Herbert	Timely	2013-Jun-15 09:00	2013-Jun-25 09:00	110	0.4166	0.54
FH	Empress	Iroquois	Timely	2013-Jun-15 09:00	2013-Jun-25 09:00	150	3.2756	3.43
FH	Empress	Kirkwall	Timely	2013-Jun-15 09:00	2013-Jun-25 09:00	110	2.3767	2.71
FH	Empress	KPUC EDA	Timely	2013-Jun-15 09:00	2013-Jun-25 09:00	110	2.4672	2.80
FH	Empress	Napierville	Timely	2013-Jun-15 09:00	2013-Jun-25 09:00	110	2.6373	3.00
FH	Empress	Niagara Falls	Timely	2013-Jun-15 09:00	2013-Jun-25 09:00	110	2.4635	2.81



Bid Floors and Fuel Ratios for illustrative purposes only.

Mainline Operational Status Bulletin

Short Term update relating to remaining capacity, and impacts to nominated quantities relative to a specific gas day and cycle.

ML Ops Status Bulletin is published twice daily:

- Timely Cycle – Posted after the completion of the timely cycle based on scheduled quantities.
- Evening Cycle – Posted early in the morning based on the confirmed quantities from the previous evening.

Mainline Operational Status Bulletin



▶ [TransCanada Home](#)
▶ [Subscribe](#)

UpdateMagazine
Keeping Customers Connected

CUSTOMER EXPRESS HOME CAPACITY PRICING & TOLLS SERVICES & TARIFFS **PIPELINES** CONTACT US SEARCH:

Customer Express Home » Pipelines » Canadian Mainline Printer-Friendly Page

Pipelines

- Canada
 - [NGTL System](#)
 - Canadian Mainline**
 - ▶ [Customer Activities](#)
 - ▶ [Informational Postings](#)
 - ▶ [Service Offerings](#)
 - ▶ [Regulatory Information](#)
 - ▶ [Industry Committee](#)
 - ▶ [Contacts](#)
 - ▶ [Site Map](#)
 - [Foothills System](#)
 - [Trans-Quebec and Maritimes Pipeline](#)
- USA
 - [ANR Pipeline Company \(ANR\)](#)
 - [Bison Pipeline](#)
 - [Gas Transmission Northwest System](#)
 - [Great Lakes Gas Transmission System](#)

Canadian Mainline

System Operations	Reports
Gas Day Summary Report	Alberta Border Heat Values
Notices - <u>All</u> <u>Critical</u> <u>Non-Critical</u>	CDE Report
Open Season	Credit and Financial Procedures (98 KB, PDF)
TransCanada's NrG Highway *	On-line Billing Service
TransCanada Reporting *	Valid Alternate Receipt Points (8.5" x 14")
Mainline Operational Status Bulletin 	

* Requires a User Id and Password

Rates	The Pipeline
2013 - 2017 Approved Mainline Tolls effective July 1, 2013	Front Line IMs
PDF XLS	Organizational Chart
Tolls Archive	Procedures
IT Bid Floors and Fuel Ratios	Mainline STFT and IT Frontline Presentation (June 2013)
IT Bid Tolls and Fuel Ratios Archive	
Summer 2013 Fuel Ratios (14 KB, PDF)	
Winter 2012/13 Fuel Ratios (15 KB, PDF)	



Mainline Operational Status Bulletin

Capacity Remaining by Segment or Location

Capacity Remaining (TJ's)	
Prairies Line	2318
Northern Ontario Line	1597
Deliveries entering Dawn Area	613
Receipts leaving Dawn Area	456
Parkway Receipt / GLGT-BH TBO	1288
Dawn to Kirkwall	540
Chippawa Receipts	At Capacity
Niagara Falls Receipts	At Capacity
EDA	1665
Iroquois	887
Downstream Stn 148	445
Lachenaie	471
East Hereford	228
SSMDA	44
Comments	
Capacity for receipts leaving the Dawn area may increase subject to the availability of discretionary transport on the Union Gas system but could ultimately be limited by space at Parkway.	

Mainline Operational Status Bulletin

Impacted Services

Services	FT		FTD		IT / STS-0	
	Authorized (%)	Not Auth'd (GJ)	Authorized (%)	Not Auth'd (GJ)	Authorized (%)	Not Auth'd (GJ)
Prairies Line	100%		100%		100%	
Northern Ontario Line	100%		100%		100%	
Deliveries entering Dawn Area	100%		100%		100%	
Receipts leaving Dawn Area	100%		100%		100%	
Parkway Receipt / GLGT-BH TBO	100%		100%		100%	
Dawn to Kirkwall	100%		100%		100%	
Chippawa receipts	100%		100%		0%	10,551
Niagara Falls Receipts	100%		0%	326,003	0%	0
EDA	100%		100%		100%	
Iroquois	100%		100%		100%	
Downstream Stn 148	100%		100%		100%	
Lachenaie	100%		100%		100%	
East Hereford	100%		100%		100%	
SSMDA	100%		100%		100%	
Comments						

Gas Day Summary Report (Mainline)

- Mainline GDSR is based on the nominated location confirmed qty.
- Estimated next gas day GDSR based on Evening Cycle information is now available.

ML Gas Day Summary Report

Gas Day Summary - TransCanada
 Effective Date Sep 26 2013
 As of Sep 27 2013 03:30

R/D	Location & DRN	Schd Qty [GJ]			
R	Centram MDA 33985	0	D	Centram MDA 33985	106,477
R	Centrat MDA 34006	0	D	Centram SSDA 34217	2,607
R	Chippawa 123847	0	D	Centrat MDA 34006	5,535
R	East Hereford 107337	27,037	D	Chippawa 123847	0
R	Emerson 1 34002	22,560	D	Cornwall 34157	12,676
R	Emerson 2 34003	0	D	East Hereford 107337	69,451
R	Empress 33667	1,962,972	D	Emerson 1 34002	96,448
R	Enbridge CDA 34090	94,597	D	Emerson 2 34003	728,649
R	GMIT EDA 34169	0	D	Empress 33667	0
R	Iroquois 67708	63,924	D	Enbridge CDA 34090	349,437
R	Kirkwall 34111	0	D	Enbridge EDA 34132	82,033
R	Niagara Falls 34537	471,284	D	Enbridge SWDA 107323	0
R	Richmound 18585	3,300	D	GMIT EDA 34169	486,450
R	SS. Marie 34162	84,964	D	GMIT NDA 34075	10,300
R	St. Clair 11779	428,038	D	Iroquois 67708	232,603
R	Ste. Genevieve 68615	750	D	KPUC EDA 34135	3,700
R	Suffield 2 34197	162,024	D	Kirkwall 34111	436,051
R	Union Dawn 88515	389,896	D	Napierville 107338	5,840
R	Union EDA 34142	0	D	Niagara Falls 34537	10,551
R	Union NCDA 34083	1,000	D	Philipsburg 34174	20,610
R	Union NDA 34066	0	D	SS. Marie 34162	0
R	Union Parkway Belt 34107	812,266	D	Spruce 34005	9,613
R	Union SWDA 107328	0	D	St. Clair 11779	24,266
R	Welwyn 107302	0			

Mainline Customer Operational Reporting



▶ [TransCanada Home](#)
▶ [Subscribe](#)

UpdateMagazine
Keeping Customers Connected

- CUSTOMER EXPRESS HOME
- CAPACITY
- PRICING & TOLLS
- SERVICES & TARIFFS
- PIPELINES**
- CONTACT US
- SEARCH:

Customer Express Home » Pipelines » Canadian Mainline

Printer-Friendly Page

Pipelines

- Canada
 - NGTL System**
 - Canadian Mainline**
 - ▶ [Customer Activities](#)
 - ▶ [Informational Postings](#)
 - ▶ [Service Offerings](#)
 - ▶ [Regulatory Information](#)
 - ▶ [Industry Committee](#)
 - ▶ [Contacts](#)
 - ▶ [Site Map](#)
 - Foothills System**
 - Trans-Quebec and Maritimes Pipeline**
- USA
 - ANR Pipeline Company (ANR)**
 - Bison Pipeline**
 - Gas Transmission Northwest System**
 - Great Lakes Gas Transmission System**

Canadian Mainline

System Operations	Reports
Gas Day Summary Report	Alberta Border Heat Values
Notices - All <u>Critical</u> <u>Non-Critical</u>	CDE Report
Open Season	Credit and Financial Procedures (98 KB, PDF)
TransCanada's NrG Highway	On-line Billing Service
TransCanada Reporting *	Valid Alternate Receipt Points (8.5" x 14")
Mainline Operational Status Bulletin	

* Requires a User Id and Password

Rates	The Pipeline
2013 - 2017 Approved Mainline Tolls effective July 1, 2013	Front Line IMs
PDF XLS	Organizational Chart
Tolls Archive	Procedures
IT Bid Floors and Fuel Ratios	Mainline STFT and IT Frontline Presentation (June 2013)
IT Bid Tolls and Fuel Ratios Archive	
Summer 2013 Fuel Ratios (14 KB, PDF)	
Winter 2012/13 Fuel Ratios (15 KB, PDF)	



Mainline Customer Operational Reporting

CUSTOMER OPERATIONAL REPORTING

[Home](#) • [BC](#) • [Foothills](#) • [Transmission](#) • [TransCanada.com](#)

MAINLINE SYSTEM
NOMINATIONS
FLOWING GAS
INVOICING
CAPACITY RELEASE
CONTRACTS
ADMINISTRATION
INFORMATIONAL POSTINGS
FAQ & TIPS
LINKS
SITE MAP
CONTACT SUPPORT



Nominations	
◆ Custody Transfer Summary	Summary of Custody Transfer account activity for all locations more info
◆ Daily Account Location Summary	Summary of account activity for all locations more info
◆ Transportation Summary	Summary of the Transportation nominations more info
◆ Custody Transfer Detail	Detail of Custody Transfer account activity at a location more info
◆ Daily Account Location Detail	Detailed transactions for an account at a specific location more info
◆ Daily Transportation Account Detail	Detailed transactions for a Transportation account more info
◆ Electronic Nomination Status	Review of nomination status more info

CUSTOMER OPERATIONAL REPORTING

[Home](#) • [BC](#) • [Foothills](#) • [Transmission](#) • [TransCanada.com](#)

MAINLINE SYSTEM

NOMINATIONS

FLOWING GAS

INVOICING

CAPACITY RELEASE

CONTRACTS

ADMINISTRATION

INFORMATIONAL POSTINGS

FAQ & TIPS

LINKS

SITE MAP

[CONTACT SUPPORT](#)

Custody Transfer Summary Report

Please enter the parameters below and click 'Submit'

Gas Day (yyyymmdd)

Account Name

Mainline Reporting

Report created:

By: ARI_SUPT / caosrptpro

TransCanada
Custody Transfer Summary Report

Gas Day: Requestor:	EAGER BEAVER CORP.		Gas Day Window: Unit of Measure: GJ				End of Gas Day	
Location	Receipt	Account	External	Nominated	Confirmed	Variance	Status	Account
Location	Delivery	Name	Reference	Quantity	Quantity			Owner
Operator	-----							
Emerson 1 VIKING GAS TRANSMISSION	Delivery	EGBC	EGBC	5,000	5,000	0	Confirmed	EAGER BEAVER CORP.
		Details						
Emerson 2 GREAT LAKES GAS TRANS.	Delivery	EGBC	EGBC	5,000	5,000	0	Confirmed	EAGER BEAVER CORP.
		Details						
Empress NOVA GAS TRANSMISSION	Receipt	EGBC	EGBC	20,000	20,000	0	Confirmed	EAGER BEAVER CORP.
		Details						
Niagara Falls TENNESSEE GAS PIPELINE	Delivery	EGBC	EGBC	10,000	10,000	0	Confirmed	EAGER BEAVER CORP.
		Details						
St. Clair GREAT LAKES GAS TRANS.	Receipt	EGBC	EGBC	2,000	2,000	0	Confirmed	EAGER BEAVER CORP.
		Details						
Union SWDA UNION GAS LIMITED	Delivery	EGBC	EGBC	10,000	10,000	0	Confirmed	EAGER BEAVER CORP.
		Details						



Mainline Reporting

Report created: 2007/11/22 11:40

By:

TransCanada
Custody Transfer Detail Report

Gas Day:		Gas Day Window:	End of Gas Day
Requestor:	EAGER BEAVER CORP.	Unit of Measure:	GJ
Account Name:	EGBC	Account Owner:	EAGER BEAVER CORP.
Location:	Union SWDA	External Ref:	EGBC

Account Owner	<u>Account Name</u>	Transaction	Nominated Quantity	<u>Confirmed Quantity</u>	Variance	Status

Receipts						

Total Receipts			0	<u>0</u>	<u>0</u>	Confirmed
Deliveries						

EAGER BEAVER CORP.	EGBC	Delivery Confirm		10,000		
EAGER BEAVER CORP.	EGBC MTT	Hub Delivery	10,000			Accepted
Total Deliveries			10,000	<u>10,000</u>	0	Confirmed

Net Deliveries			10,000	<u>10,000</u>	0	Confirmed



CUSTOMER OPERATIONAL REPORTING

[Home](#) • [BC](#) • [Foothills](#) • [Transmission](#) • [TransCanada.com](#)

MAINLINE SYSTEM
NOMINATIONS
FLOWING GAS
INVOICING
CAPACITY RELEASE
CONTRACTS
ADMINISTRATION
INFORMATIONAL POSTINGS
FAQ & TIPS
LINKS
SITE MAP
CONTACT SUPPORT



Nominations	
◆ Custody Transfer Summary	Summary of Custody Transfer account activity for all locations more info
◆ Daily Account Location Summary	Summary of account activity for all locations more info
◆ Transportation Summary	Summary of the Transportation nominations more info
◆ Custody Transfer Detail	Detail of Custody Transfer account activity at a location more info
◆ Daily Account Location Detail	Detailed transactions for an account at a specific location more info
◆ Daily Transportation Account Detail	Detailed transactions for a Transportation account more info
◆ Electronic Nomination Status	Review of nomination status more info

CUSTOMER OPERATIONAL REPORTING

[Home](#) • [BC](#) • [Foothills](#) • [Transmission](#) • [TransCanada.com](#)

- MAINLINE SYSTEM
- NOMINATIONS
- FLOWING GAS
- INVOICING
- CAPACITY RELEASE
- CONTRACTS
- ADMINISTRATION
- INFORMATIONAL POSTINGS
- FAQ & TIPS
- LINKS
- SITE MAP
- CONTACT SUPPORT

Daily Account Location Summary Report

Please enter the parameters below and click 'Submit'

Gas Day (yyyymmdd)

Account Name

Business Right
Multi Title Transfer
Park and Loan



Mainline Reporting

Report created:

By: ARI_SUPT / caosrptprod01

TransCanada
Daily Account Location Summary Report

Gas Day:
Enterprise: EAGER BEAVER CORP.

Gas Day Window: End of gas day
Account Type: Multi Title Transfer
Unit of Measure: GJ

**** Note: Account Balances are approximates only. ****

Location	Account Name	Opening Balance	Transfers In	Transfers Out	Variance	Closing Balance	Status	Account Owner
Emerson 1 VIKING GAS TRANSMISSION	EGBC MTT Details	30	8,183	8,193	-10	20	Pack	EAGER BEAVER CORP.
Emerson 2 GREAT LAKES GAS TRANS.	EGBC MTT Details	0	41,125	<u>41,125</u>	0	<u>0</u>		EAGER BEAVER CORP.
Empress NOVA GAS TRANSMISSION	EGBC MTT Details		80,000	<u>80,000</u>	0	<u>0</u>		EAGER BEAVER CORP.
Niagara Falls TENNESSEE GAS PIPELINE	EGBC MTT Details	-25	10,105	10,110	-5	-30	Draft	EAGER BEAVER CORP.

Mainline Reporting

Report created: 2007/11/22 11:57

TransCanada
Daily Account Location Detail Report

Selection Criteria:

Date: 2007/11/21
Account: EGBC MTT
Location: Empress

Business Right: ALL
Summarize-By: Location-Account
Format: Daily-Total
Unit of Measure: GJ

Date: 2007/11/21 09:00

Account Owner: EAGER BEAVER CORP.
Account: EGBC MTT
Location: Empress

**** Note: Account Balances are approximates only. ****

Operator	Account	Account Owner	Type	Quantity	Status
Opening Balance				0	
NOVA GAS TRANSMISSION	EGBC	EAGER BEAVER CORP.	Hub Receipt	20,000	Accepted
NOVA GAS TRANSMISSION	NGX MTT	NATURAL GAS EXCHANGE INC.	Multi Title	40,000	Accepted
NOVA GAS TRANSMISSION	ABCD	ABCD ENERGY LTD	Hub Receipt	20,000	Accepted
Total Customer Receipts				80,000	
NOVA GAS TRANSMISSION	XYZ MTT	XYZ CANADA LTD.	Multi Title	20,000	Accepted
NOVA GAS TRANSMISSION	12345	EAGER BEAVER CORP.	Receipt	10,000	Accepted
NOVA GAS TRANSMISSION	67890	EAGER BEAVER CORP.	Receipt	20,000	Accepted
NOVA GAS TRANSMISSION	11111	CANADA GAS CO.	Receipt	30,000	Accepted
Total Customer Deliveries				80,000	
Net Customer Total				0	
Closing Balance				0	Zero



CUSTOMER OPERATIONAL REPORTING

[Home](#) • [BC](#) • [Foothills](#) • [Transmission](#) • [TransCanada.com](#)

MAINLINE SYSTEM
NOMINATIONS
FLOWING GAS
INVOICING
CAPACITY RELEASE
CONTRACTS
ADMINISTRATION
INFORMATIONAL POSTINGS
FAQ & TIPS
LINKS
SITE MAP
CONTACT SUPPORT



Nominations	
◆ Custody Transfer Summary	Summary of Custody Transfer account activity for all locations more info
◆ Daily Account Location Summary	Summary of account activity for all locations more info
◆ Transportation Summary	Summary of the Transportation nominations more info
◆ Custody Transfer Detail	Detail of Custody Transfer account activity at a location more info
◆ Daily Account Location Detail	Detailed transactions for an account at a specific location more info
◆ Daily Transportation Account Detail	Detailed transactions for a Transportation account more info
◆ Electronic Nomination Status	Review of nomination status more info

Mainline Reporting

Report Created:

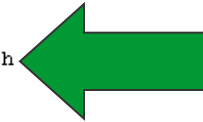
TransCanada
Transportation Summary Report

By: ARI_SUPT / caosrptprod01

Gas Day:

Requestor: EAGER BEAVER CORP.
Gas Day Window: End of Gas Day
Unit of Measure:GJ

Account Name	Receipt Location	Delivery Location	Service	Bid Price	Nominated Quantity	Authorized Quantity	Variance Status	Primary Delivery Location	GST exempt	Account Owner
12345 CORP. Details	St. Clair	Union SWDA	FT	0.0000	2,000	2,000	0 Fully Auth		N	EAGER BEAVER
12345 CORP. Details	Welwyn	Emerson 1	IT	0.1840	12,000	12,000	0 Fully Auth		N	EAGER BEAVER
12345 CORP. Details	Welwyn	Emerson 2	IT	0.1840	5,000	5,000	0 Fully Auth		N	EAGER BEAVER
25458 CORP. Details	Empress	Union SWDA	FT D	0.0000	10,000	8,000	0 Not Fully Auth		N	EAGER BEAVER





Transacting Business in Alberta – Supply Demand


Supply Demand Balancing


- All Alberta customers who hold a Transportation Account
- Accounts must be balanced daily to within a calculated positive/minus amount – the balanced zone
- NIT only customers receive a zero balance zone
- 500 GJs grace zone, 501 GJs will be cut back to zero
- Customers out of their balance zone at end of gas day are balanced by NGTL.¹

¹ As per NGTL Tariff Appendix D – Customer Inventories

Supply Demand

CUSTOMER ACTIVITIES
MAIN MENU -- Select From List --




Flowing Gas / [View Supply Demand](#)

View Supply Demand Summary

CUSTOMER NAME: New Find Resources (NECC)

[Update/View Contact Info](#)
[Download CSV](#)

Gas Day: 2008-Aug-20				2008-Aug-21
Status: Physical Gas Day Closed				Preliminary
System Tolerance: -4/4				-4/4
Customer	Accumulated Inventory (GJ)	Final Discretion (GJ)	Balance w/ Discretion (GJ)	Accumulated Inventory (GJ)
NECC	-88,997	9,929	-14,824/24,753	-91,173

HOME ACCOUNT: New Find Resources (NECC)							
Date	Receipt (GJ)	Delivery (GJ)	Adjustment (GJ)	Net Change (GJ)	Accumulated Inventory (GJ)	Balance Zone (GJ)	Final Discretion (GJ)
2008-Aug-21	452,951	455,127	0	-2,176	-91,173	-14,824/14,824	
2008-Aug-20	465,951	469,588	-6,930	-10,567	-88,997	-14,824/14,824	9,929
2008-Aug-19	442,951	450,627	-6,930	-14,606	-78,430	-14,824/14,824	9,929
2008-Aug-18	466,951	467,740	-6,930	-7,719	-63,824	-14,824/14,824	9,929
2008-Aug-17	455,951	458,823	-6,930	-9,802	-56,105	-14,824/14,824	0
2008-Aug-16	457,951	450,826	-6,930	195	-46,303	-14,824/14,824	0
2008-Aug-15	446,751	440,846	-6,930	-1,025	-46,498	-14,824/14,824	0
2008-Aug-14	453,951	415,796	-6,930	31,225	-45,473	-14,824/14,824	0
2008-Aug-13	459,951	410,750	-6,930	42,271	-76,698	-14,824/14,824	0
2008-Aug-12	504,951	454,919	-6,930	43,102	-118,969	-14,824/14,824	0
2008-Aug-11	464,774	483,222	-6,930	-25,378	-162,071	-14,824/14,824	0
2008-Aug-10	467,715	459,102	-6,930	1,683	-136,693	-14,824/14,824	0
2008-Aug-09	475,990	456,532	-6,930	12,528	-138,376	-14,824/14,824	0
2008-Aug-08	451,661	472,394	-6,930	-27,663	-150,904	-14,824/14,824	0
2008-Aug-07	455,793	437,366	-6,930	11,497	-123,241	-14,824/14,824	0
2008-Aug-06	473,109	495,984	-6,930	-29,805	-134,738	-14,824/14,824	0
2008-Aug-05	466,722	472,243	-6,930	-12,451	-104,933	-14,824/14,824	0
2008-Aug-04	401,343	460,705	-6,930	-14,708	-92,482	-14,824/14,824	0

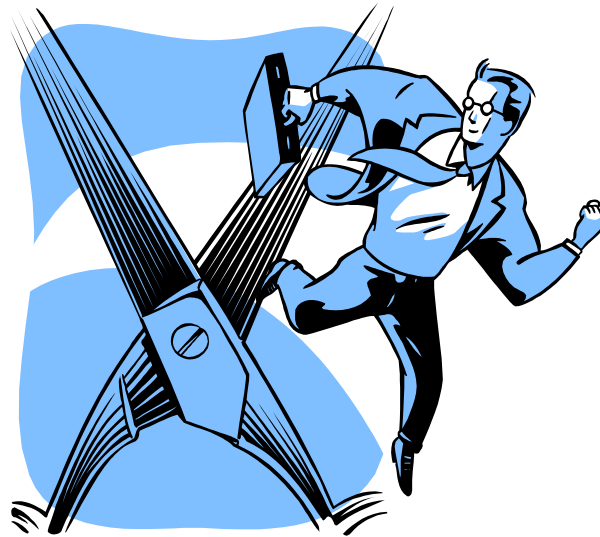
Call Centre 1.877.920.PIPE (7473)
Version: 0.1.3639

Supply Demand Balancing Process

Balance previous gas day until 10:30 MST

Action taken on accounts out of balance

- NIT cuts (shortest to longest term)
- physical flow reduction
- suspension of service or Alberta Gas Accounting (AGA) access



Tolerance Changes

TransCanada will notify you of Tolerance changes or Potential Tolerance Changes via NrG Bulletin Notification

Bulletins appear on our website

- Emailed to you (via NrG Highway User Preferences)
- Phone Notification – send an email to nominations@transcanada.com to be added to the Phone Out List

System tolerance changes

- reduced balanced zone (eg. -3/+4, -2/+3, -1/+2) other combinations are available

Feedback is always appreciated and welcome:

- Is there a report you would like to see enhanced?
- Individual training sessions for your shop required?
- Let us know how we are doing



Contact Information

For Questions regarding changes to the IT Bid Floors / Fuel Ratios or Nomination processes please contact:

- The Call Centre

- Toll Free 877-920-7473
- Calgary 403-920-7473
- nominations@transcanada.com

- Graham Gent

- 403-920-6846
- IM tcgrahamgent
- graham_gent@transcanada.com



STFT Process

Detailed overview - STFT

- Summary of STFT Changes
- STFT Open Season Postings
- New STFT Electronic Bid Form – it's blue now 😊
- Reporting – STFT CDE Report changes
- STFT Open Season Process
- Changes to Invoice
- Important STFT Links
- Contact Information

Summary of STFT Changes

- TransCanada to set Minimum Bid Floors as a % of FT Toll
- The Bid Floor % will be posted by 3pm (Mountain Time) a day before an Open Season begins
- The %'s posted are for each path and terms available for that Open Season
- New Electronic STFT Bid Form Available – with validations
- STFT CDE Report: No future dated contracts displayed

Where are the %'s:

<http://www.transcanada.com/customerexpress/2802.html>

Short Term Capacity Bid Floors

- ▶ Short Term Capacity: Summer Bid Floors (91 KB, PDF)
- ▶ Short Term Capacity: Summer Bid Floors (33 KB, XLS)
- ▶ Short Term Capacity: Winter Bid Floors (91 KB, PDF)
- ▶ Short Term Capacity: Winter Bid Floors (33 KB, XLS)

STFT Minimum Bid Floors

Canadian Mainline 2013-14 Open Season for STFT and ST-SN



Revised September 25, 2013

Receipt	Delivery	Rest of Summer (%)	October (%)	September - March 2014 (%)	October - March 2014 (%)	October 1 - 7 (%)
Empress	Kirkwall	500	n/a	n/a	n/a	n/a
Empress	East Hereford	500	n/a	n/a	n/a	n/a
Empress	Emerson 2	205	205	105	105	n/a
Empress	Union SWDA	500	n/a	n/a	n/a	n/a
Niagara Falls	Union SWDA	n/a	n/a	n/a	n/a	162
Niagara Falls	Kirkwall	n/a	n/a	n/a	n/a	274
Union Dawn	Kirkwall	500	n/a	n/a	n/a	n/a



New STFT Electronic Bid Form

<http://www.transcanada.com/customerexpress/4441.html>

STFT Bid Forms - (Short Term Firm Transportation)

This bid form is available to assist shippers with bidding for Mainline Short Term Firm Transportation (STFT). Efforts have been made to provide accurate and timely information in the form however this form does not guarantee that a bid is in conformance with the rules of the Open Season. Shippers are encouraged to familiarize themselves with the bidding procedures outlined in the Mainline Tariff and the Open Season Posting. Any questions can be directed to your [Mainline Customer Account Manager](#).

In the event of any discrepancies or inconsistencies, the TransCanada Tariff is considered to be the correct source of information.

For any questions or concerns regarding the online bid form, please contact Sherri Grassick at 1.403.920.2064 or Norma Marchet at 1.403.920.6258 or email mainline_contracting@transcanada.com.

Please Note: If a STFT bid is conditional on another STFT bid(s), if either STFT bid requires a reduction to the maximum daily quantity, the maximum daily quantity for the other STFT bid(s) will be reduced by the same percentage.

- ▶ [STFT Electronic Bid Form](#) ←
- ▶ [STFT Paper Bid Form](#) ←
- ▶ [Instructions: How To Create your STFT Bid Form Online!](#)
- ▶ [Customer Mnemonic List](#) (65 KB, PDF)
- ▶ [STFT Toll Schedule](#) (45 KB, PDF)
- ▶ [STFT Master Agreement](#) (35 KB, PDF)
- ▶ [Tolls](#)
- ▶ [STFT Postings](#)
- ▶ [July 1, 2013 STFT Process Change Presentation](#)

If you have any suggestions or comments for improving this tool, please feel free to [contact us](#).



STFT Electronic Bid Form

Mainline STFT Bid Percentage Form

Note: All fields must be completed

Shipper Mnemonic:
Don't know your Mnemonic? - [click here](#)

Receipt Point:

Delivery Point:

Zero Rate GST/HST: N/A
(as applicable)

STFT Service Period:

Start Date: (inclusive)

End Date: (inclusive)

Maximum Daily Quantity:

Minimum Daily Quantity:

STFT Bid Percentage:
(2 decimals only)

Corresponding Price: \$
GJ/day
(for information purposes only)

Bid is conditional upon other STFT Bid(s): Yes No

Contact Information:

Contact Name: (First and Last name)

Telephone:

Fax:



STFT Electronic Bid Form Calculate Function

For a 7 day bid with an Empress to Union SWDA path at 100%:

STFT Bid Percentage: (2 decimals only)	<input type="text" value="100"/>	Corresponding Price: \$ GJ/day (for information purposes only)	<input type="text" value="1.4200"/>	<input type="button" value="Calculate"/>
--	----------------------------------	---	-------------------------------------	--

For a 7 day bid with an Empress to Union SWDA path at 200%:

STFT Bid Percentage: (2 decimals only)	<input type="text" value="200"/>	Corresponding Price: \$ GJ/day (for information purposes only)	<input type="text" value="2.8400"/>	<input type="button" value="Calculate"/>
--	----------------------------------	---	-------------------------------------	--

STFT – Example: Bid % lower than minimum

Error: Bid Floor should not be less than 140.00 %

Mainline STFT Bid Percentage Form

Note: All fields must be completed

Shipper Mnemonic:

Don't know your Mnemonic? - [click here](#)

Receipt Point:

Delivery Point:

Zero Rate GST/HST:
(as applicable)

STFT Service Period:

Start Date: (inclusive)

End Date: (inclusive)

Maximum Daily Quantity:

Minimum Daily Quantity:

STFT Bid Percentage:
(2 decimals only)

Corresponding Price: \$
GJ/day
(for information purposes only)

Bid is conditional upon other STFT Bid(s): Yes No

STFT – Example: Bid % higher than minimum

Please Note: Bid percent of 160.00 is greater than the minimum percent of 140.00

Please Execute and Fax to (403) 920-2343

STFT Bid Percentage: 160.00%

(corresponds to a current day price of \$0.3853 GJ/day - will change when toll changes)

Transportation Tariff

TransCanada PipeLines Limited

STFT CONTRACT

Page 1 of 1

EXHIBIT "A" ADDENDUM
Short Term Firm Transportation Service Contract Addendum

This Exhibit "A" Addendum, made as of the 27th day of September, 2013, to the Short Term Firm Transportation Service Contract made as of the 5th day of May, 2006, between TransCanada PipeLines Limited ("TransCanada") and TestTestTest ("Shipper").

System Segment Niagara Falls to Union SWDA

The Delivery Point hereunder is the point of interconnection between the pipeline facilities of TransCanada and Union Gas Limited which is located at or near Union SWDA.

The Receipt Point hereunder is the point of interconnection between the pipeline facilities of TransCanada and Tennessee Gas Pipeline Company which is located at or near Niagara Falls.

STFT Service Period: October 01, 2013 to October 07, 2013

Maximum Daily Quantity: 100 GJ Minimum Daily Quantity: 100 GJ

STFT Bid Percentage: (maximum 2 decimal places): 160.00 %.

Is this STFT bid conditional upon another STFT bid(s)?

Yes No If Yes, the STFT bid(s) upon which this STFT is conditional must be attached. Indicated

the number of STFT bid(s) attached 0



STFT – Example: Bid % equals minimum %

Please Execute and Fax to (403) 920-2343

STFT Bid Percentage: 140.00%

(corresponds to a current day price of \$0.3371 GJ/day - will change when toll changes)

Transportation Tariff

TransCanada PipeLines Limited

STFT CONTRACT

Page 1 of 1

EXHIBIT "A" ADDENDUM
Short Term Firm Transportation Service Contract Addendum

This Exhibit "A" Addendum, made as of the 27th day of September, 2013, to the Short Term Firm Transportation Service Contract made as of the 5th day of May, 2006, between TransCanada PipeLines Limited ("TransCanada") and TestTestTest ("Shipper").

System Segment Niagara Falls to Union SWDA

The Delivery Point hereunder is the point of interconnection between the pipeline facilities of TransCanada and Union Gas Limited which is located at or near Union SWDA.

The Receipt Point hereunder is the point of interconnection between the pipeline facilities of TransCanada and Tennessee Gas Pipeline Company which is located at or near Niagara Falls.

STFT Service Period: October 01, 2013 to October 07, 2013

Maximum Daily Quantity: 100 GJ Minimum Daily Quantity: 100 GJ

STFT Bid Percentage: (maximum 2 decimal places): 140.00 %.

Is this STFT bid conditional upon another STFT bid(s)?

Yes No If Yes, the STFT bid(s) upon which this STFT is conditional must be attached. Indicated the number of STFT bid(s) attached 0



STFT – Example: Path is not available for specific term

The STFT Service is unavailable for the selected path in the specified period.

Mainline STFT Bid Percentage Form

Note: All fields must be completed

Shipper Mnemonic:

Don't know your Mnemonic? - [click here](#)

Receipt Point:

Delivery Point:

Zero Rate GST/HST: Yes No
(as applicable)

STFT Service Period:

Start Date:  (inclusive)
yyyy/mm/dd

End Date:  (inclusive)
yyyy/mm/dd

Maximum Daily Quantity:

Minimum Daily Quantity:

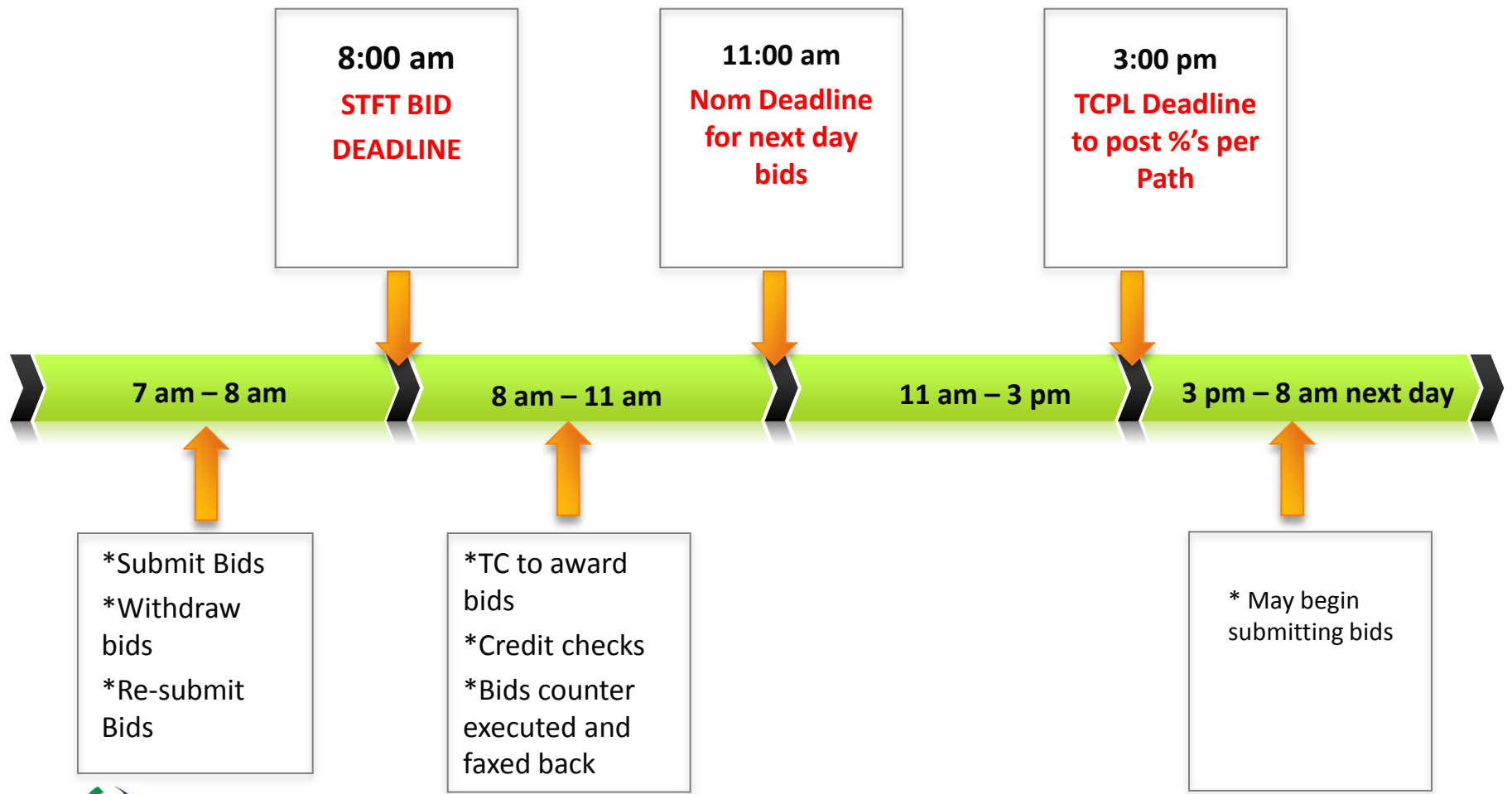
STFT Bid Percentage:
(2 decimals only)

Corresponding Price: \$
GJ/day
(for information purposes only)

Bid is conditional upon other STFT Bid(s): Yes No



STFT Process – all times are Mountain Time





CUSTOMER OPERATIONAL REPORTING

TransCanada

[Home](#) • [BC](#) • [Foothills](#) • [Transmission](#) • [TransCanada.com](#)

MAINLINE SYSTEM

NOMINATIONS

FLOWING GAS

INVOICING

CAPACITY RELEASE

CONTRACTS

ADMINISTRATION

INFORMATIONAL POSTINGS

FAQ & TIPS

LINKS

SITE MAP

[CONTACT SUPPORT](#)

Welcome to TransCanada's Customer Operational Reporting



[Adobe](#) Acrobat Reader is required to print the reports in PDF format. Version 4.0 is recommended.

[Download](#) it for free.



CUSTOMER OPERATIONAL REPORTING

TransCanada

[Home](#) • [BC](#) • [Foothills](#) • [Transmission](#) • [TransCanada.com](#)

- MAINLINE SYSTEM
- NOMINATIONS
- FLOWING GAS
- INVOICING
- CAPACITY RELEASE
- CONTRACTS
- ADMINISTRATION
- INFORMATIONAL POSTINGS
- FAQ & TIPS
- LINKS
- SITE MAP
- [CONTACT SUPPORT](#)

Contracts	
◆ Account Contract Summary	Summary of account and related contract information more info
◆ Contract Utilization	Contract Utilization Report more info
◆ STFT CDE Report	Short Term Firm Transportation Contract Demand
◆ Future CDE	Future Contract Demand Report
◆ Transactional TA Report	Transactional Temporary Assignment Report



CUSTOMER ACTIVITIES

MAIN MENU

Contract Management / Reports

[Report Menu](#) > [Short Term Firm Transportation Contract Demand \(STFT-CDE\)](#)

Select Report Parameters

DATE FROM:  DATE TO: 

**** Note: Future Dated contracts will not display.**

HIDE SUB TOTAL: Yes No

FORMAT: XLS (Excel Download) HTML PDF (Adobe Acrobat)

Submit

Clear

Call Centre 1.877.920.PIPE (7473)

Changes to Invoice

Transportation Invoice

TransCanada PipeLines Limited
 GST REGISTRATION NUMBER #####

For payment instructions see the Invoice Summary



450 1st Street S.W.
 Calgary, Alberta, Canada T2P 5H1

ATTN: Mr. John Doe

 TEST CUSTOMER
 999 Drive
 Timbucktoo, ON, Canada M9W 5S3

Date August 10, 2013
 Customer No. 19999
 Accts. Rec. No. B099999
 Billing Period Month of July 2013

 Invoice No. 900001

SERVICE TYPE	CLASS OF SERVICE	DELIVERY AREA OR PATH	CHARGE TYPE	QUANTITY (GJ)	TOLL (\$/GJ)	AMOUNT (\$CDN)	TAX
Transportation	Short Term Firm Transportation	Empress to Union SWDA	Demand - Bid Percentage 118.48 Prorated 7/31 days Commodity	1,000	1.68	11760.00	13%
				7,000	0	0.00	13%

Total Short Term Firm Transportation	8,000	11,760.00
Total Transportation	8,000	11,760.00
Total Charges Before GST		11,760.00
Goods and Service Tax at 13.00%	Tax Base 11,760.00	1,528.80
Total Charges		13,288.80

TOTAL PAYABLE ON OR BEFORE AUGUST 20, 2013
 PURSUANT TO THE GENERAL TERMS AND CONDITIONS, SECTION XI OF THE TARIFF
 Page 1 of 1

13,288.80



Important STFT Links

For Open Seasons and Bid Floor % and terms available:
<http://www.transcanada.com/customerexpress/2802.html>

For STFT % Electronic Form:
<http://www.transcanada.com/customerexpress/4441.html>

For STFT CDE Report: (will require ID and Password)
<https://services.tcpl.ca/cor/ext/IRMenuIndexML.htm>

Contact Information

For questions concerning Bids please contact:

Sherri Grassick

403-920-2064

IM: TCsherrigrassick

Norma Marchet

403-920-6258

IM: TC Norma Marchet

mainline_contracting@transcanada.com

Mainline Contract Renewal Change

RH 001-2013 NEB Decision –Contract Renewal Rights

- Renewal Notice changed from 6 months to two years Effective immediately
- Renewal Transition Mechanism for existing contracts
- NrG Bulletin outlining the change to the Renewal rights
- TransCanada will send current contract profiles and Renewal options for election.
- Shipper will have until January 31, 2014 to make their election

Renewal Election Contacts

Norma Marchet

403-920-6258

IM: TC Norma Marchet

mainline_contracting@transcanada.com

Barbara Miles

403-920-5780

Barbara_miles@transcanada.com

Thank You

Any Questions??





Mainline Operations Update

STFT Allocations

Canadian Mainline Outlook

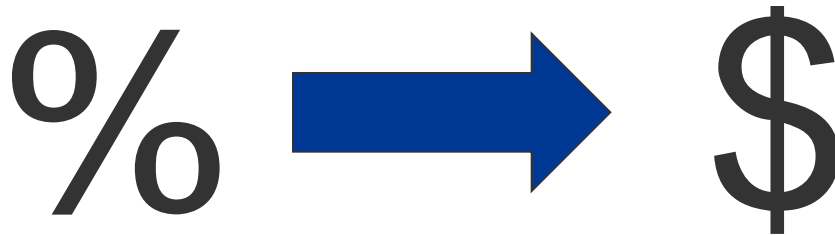
Expansions for 2013/14

New Data provided for 2013/14

STFT Allocation

There are no changes to the Allocation Process, however, the bid % must be converted to \$\$ for revenue calculations used in the Allocation process

“STFT Bid Percentage” is converted to an “STFT Allocation Price”



Nb. STFT Allocation Price is limited to 4 decimal places

If bidding small % increments, do the math to ensure it would result in an increase to the STFT Allocation Price

STFT Allocation

Allocation of capacity:

From Section 3.3 of the STFT Toll Schedule:

TransCanada shall allocate Available Short Term Capacity to the Shipper bids resulting in the highest aggregate transportation revenue

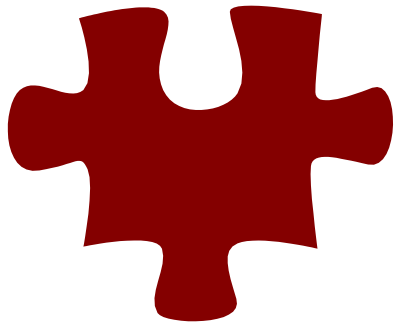
This process may not be entirely intuitive...

STFT Allocation

All bids from all shippers grouped together and analyzed to determine what combination of bids will result in the greatest overall transportation revenue

What results in the greatest revenue?

One big contract?



Several small contracts?



Answer... It depends on the total revenue

STFT Allocation

For example:

Shipper A bids one large contract with an "all or none" selection



- Shippers B, C, D, E bid for small contracts however...
- Shipper B bid 101% !

The highest aggregate transportation revenue...

- is the 4 small bids

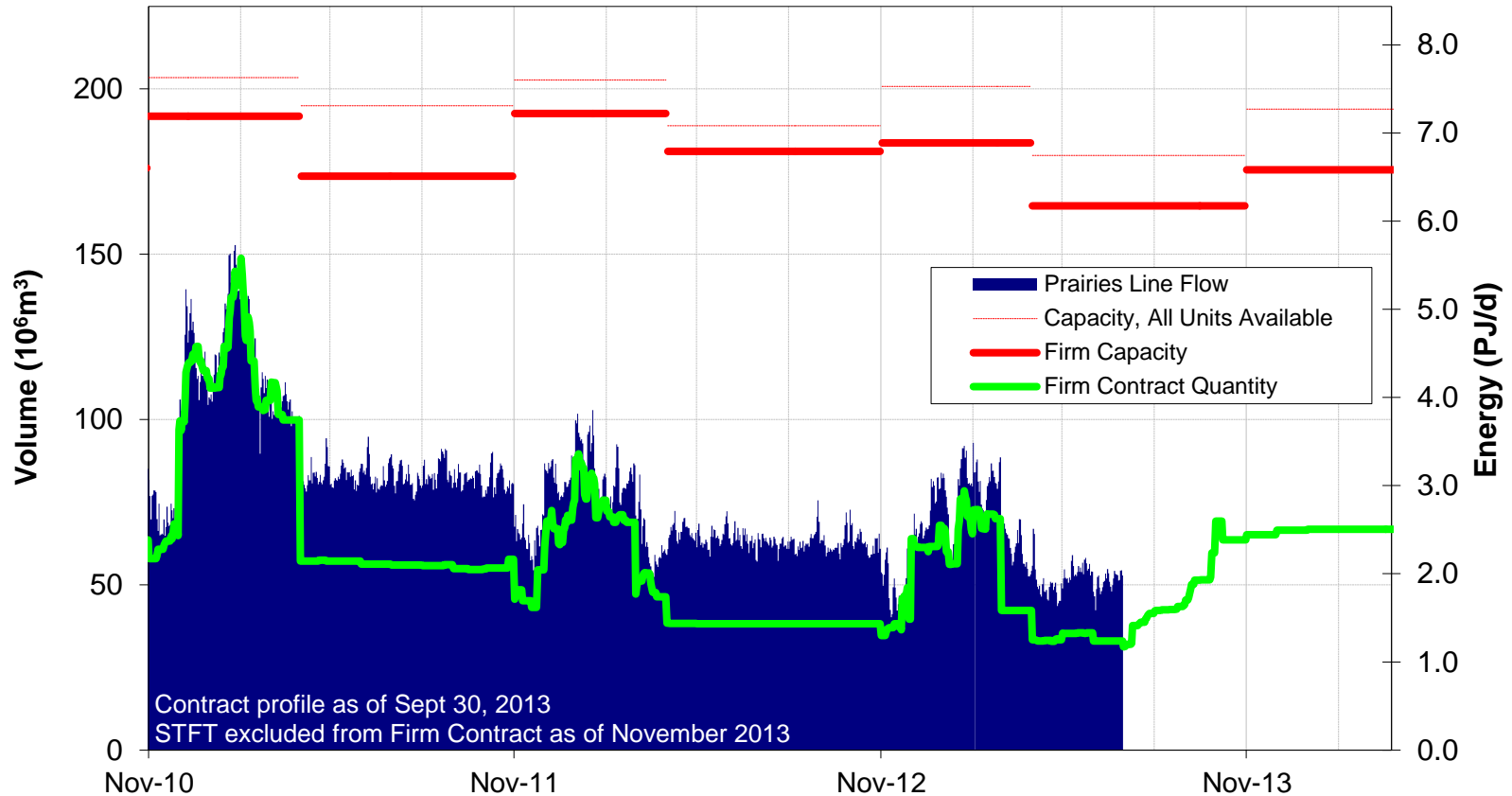


Canadian Mainline Outlook

- **Since the RH-003 Decision, shippers have shifted their contracting behaviour more towards FT services**
- **Empress, the Northern Ontario Line and the Eastern Delivery Area have all seen increases in the contracted FT quantities**
- **FT contract quantities remain below the Peak historical requirement**
- **Discretionary volumes flowing under STFT or IT services are expected**

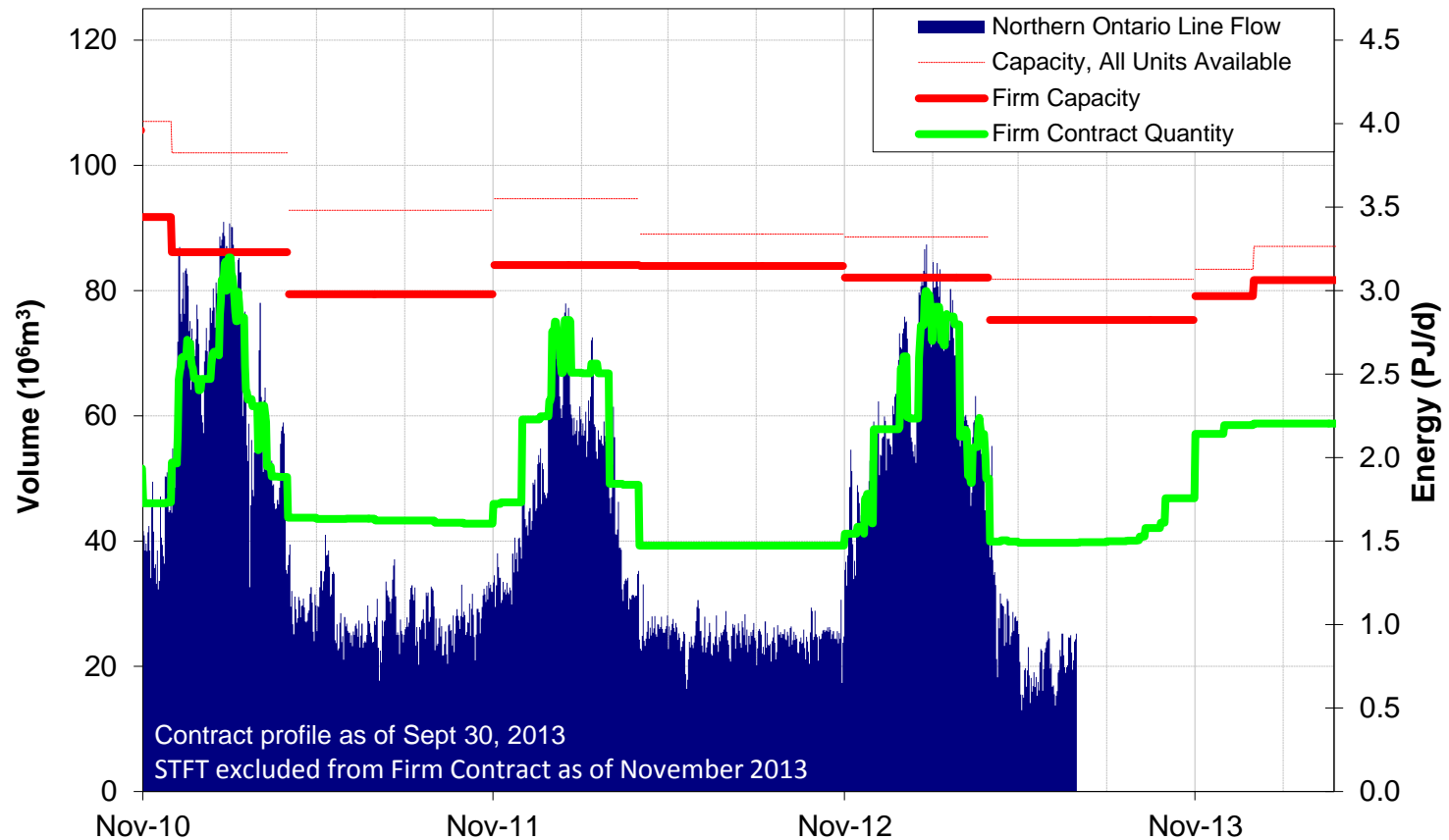
Capacity vs Contract

Prairies Line



FT Contract remains quite a bit below the overall Prairies Capacity

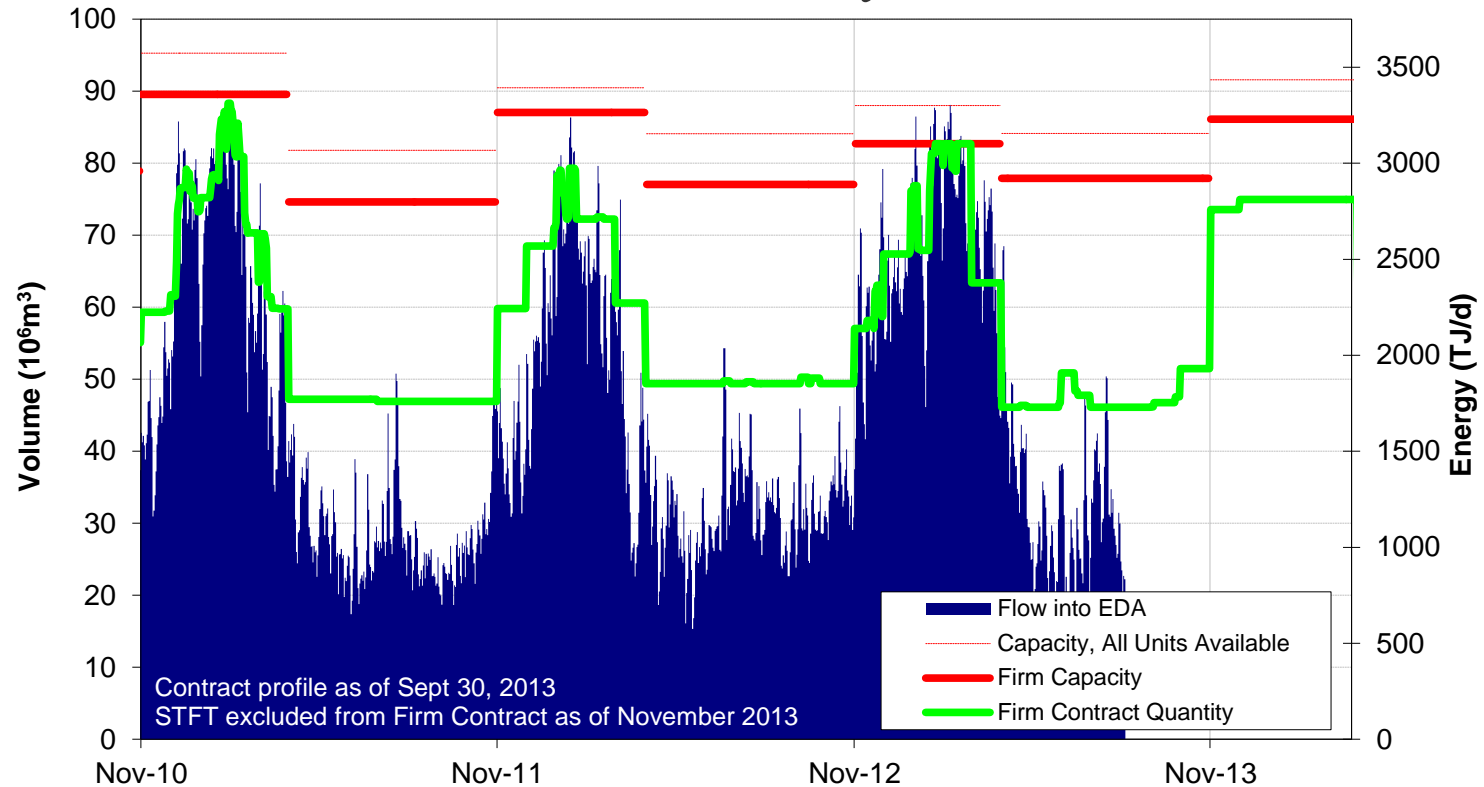
Northern Ontario Line



Initial sections of the NOL Line 2 are scheduled to be returned to active service through November and December 2013

Capacity vs Contract

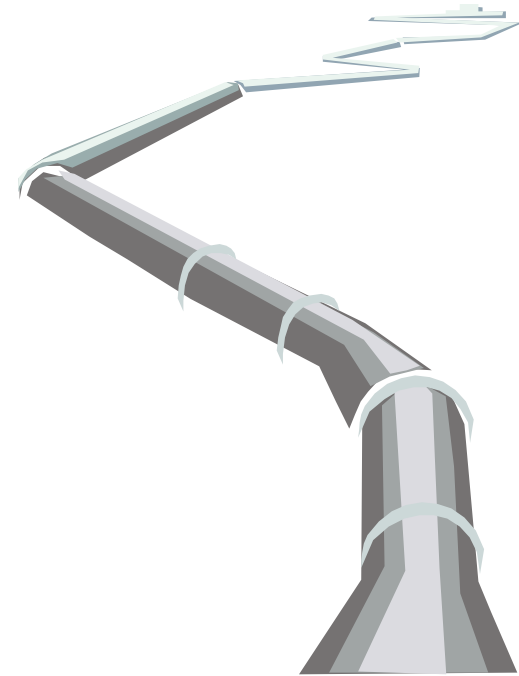
Eastern Delivery Area



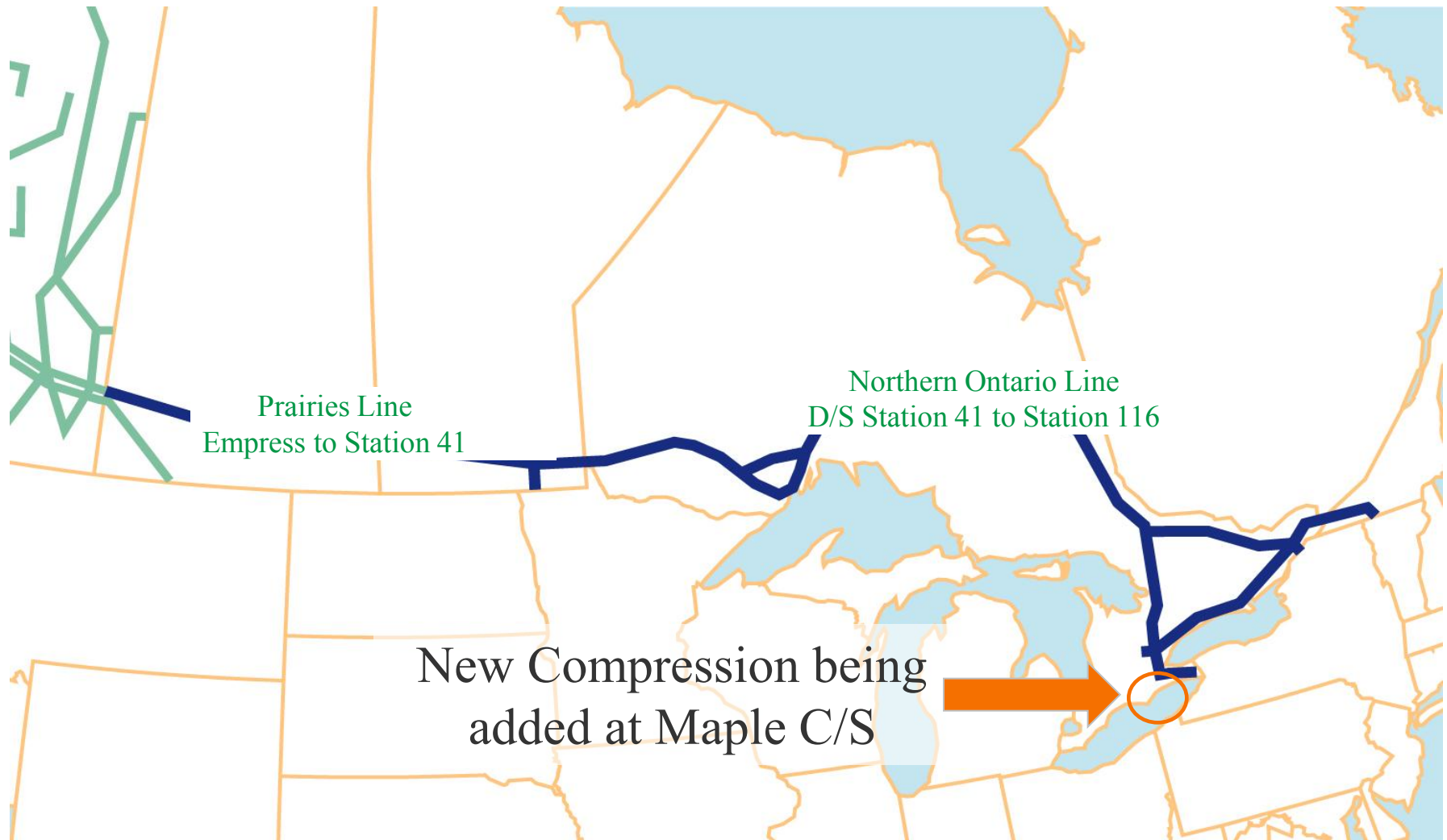
Much of the EDA peaking loads appear to have been contracted as FT service rather than STFT as seen in the past
FT does not yet match the peak requirement however

NOL Line 2 – Hydrotest program

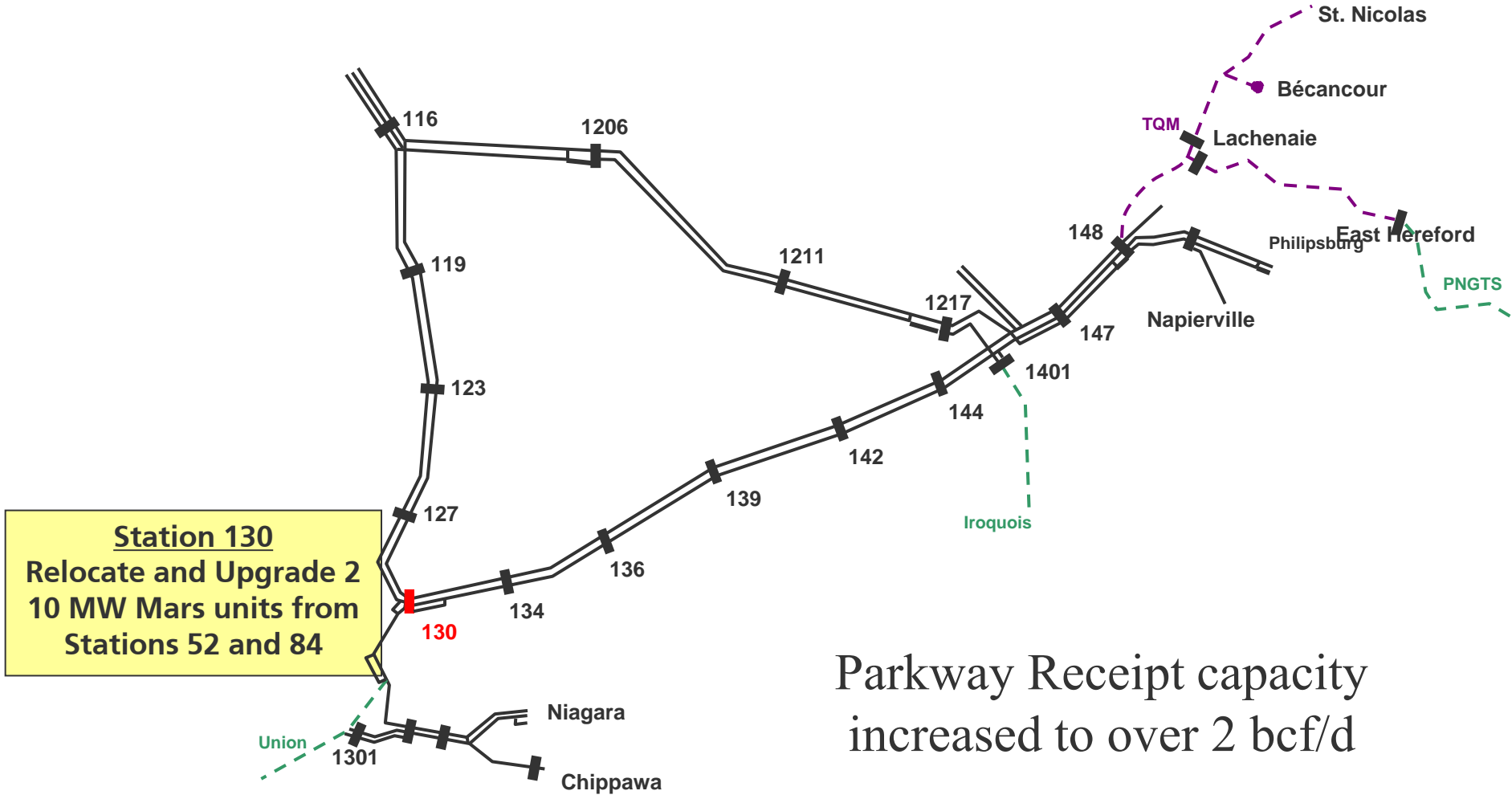
- **As seen in the NOL Slide, 5 sections of the NOL Line-2 are expected to be returned to service for the winter of 2013/14**
- **These 5 sections add 185 TJ of firm capacity through the NOL and about 210 TJ of total capacity**
- **A plan is in place to facilitate the full return to active service of all sections of the NOL Line-2 prior to November 2015**



2013 Mainline Expansion Facilities

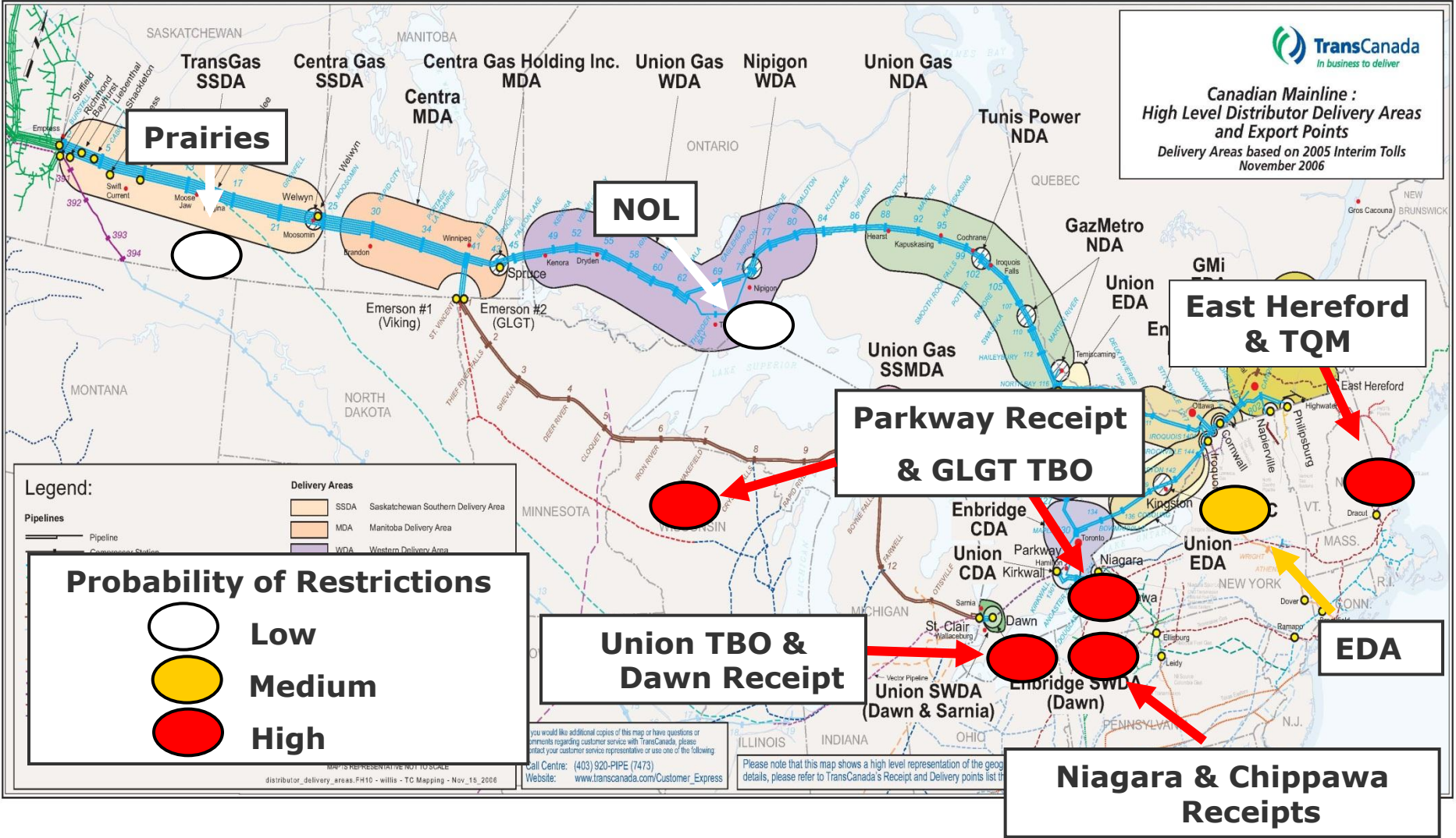


2013 Mainline Expansion Facilities



Parkway Receipt capacity increased to over 2 bcf/d

Potential for Discretionary Service Restriction



New Data?

- **Maintenance Capacities are posted every Friday for the week**
- **New for 2013/14 is the Eastern Delivery Area (EDA) capacity**
- **Under “non-critical notices” from Customer Express, click on the TransCanada Planned Maintenance bulletin**
- **Capacity is consistent with the “Mainline Operation Status Bulletin” provided by the Volume Planners**

New Data?



- ▶ [TransCanada Home](#)
- ▶ [Subscribe](#)

UpdateMagazine
Keeping Customers Connected

CUSTOMER EXPRESS HOME CAPACITY PRICING & TOLLS SERVICES & TARIFFS **PIPELINES** CONTACT US SEARCH:

Customer Express Home » Pipelines » Canadian Mainline Printer-Friendly Page

Pipelines

Canada

[NGTL System](#)

[Canadian Mainline](#)

- ▶ [Customer Activities](#)
- ▶ [Informational Postings](#)
- ▶ [Service Offerings](#)
- ▶ [Regulatory Information](#)
- ▶ [Industry Committee](#)
- ▶ [Contacts](#)
- ▶ [Site Map](#)

[Foothills System](#)

[Trans-Quebec and Maritimes Pipeline](#)

USA

[ANR Pipeline Company \(ANR\)](#)

[Bison Pipeline](#)

[Gas Transmission Northwest System](#)

[Great Lakes Gas Transmission System](#)

Canadian Mainline

System Operations

[Gas Day Summary Report](#)

Notices - [All](#) | [Critical](#) | [Non-Critical](#)

[Open Season](#)

[TransCanada's NrG Highway *](#)

[TransCanada Reporting *](#)

[Mainline Operational Status Bulletin](#)

* Requires a User Id and Password

Rates

[2013 - 2017 Approved Mainline Tolls effective July 1, 2013](#)

[PDF](#) [XLS](#)

[Tolls Archive](#)

[IT Bid Floors and Fuel Ratios](#)

[IT Bid Tolls and Fuel Ratios Archive](#)

[Summer 2013 Fuel Ratios \(14 KB, PDF\)](#)

[Winter 2012/13 Fuel Ratios \(15 KB, PDF\)](#)

Reports

[Alberta Border Heat Values](#)

[CDE Report](#)

[Credit and Financial Procedures \(98 KB, PDF\)](#)

[On-line Billing Service](#)

[Valid Alternate Receipt Points \(8.5" x 14"\)](#)

The Pipeline

[Front Line IMS](#)

[Organizational Chart](#)

[Procedures](#)

[Mainline STFT and IT Frontline Presentation \(June 2013\)](#)



New Data?



System-wide Notices distributed by **NrG Information Services Inc.**

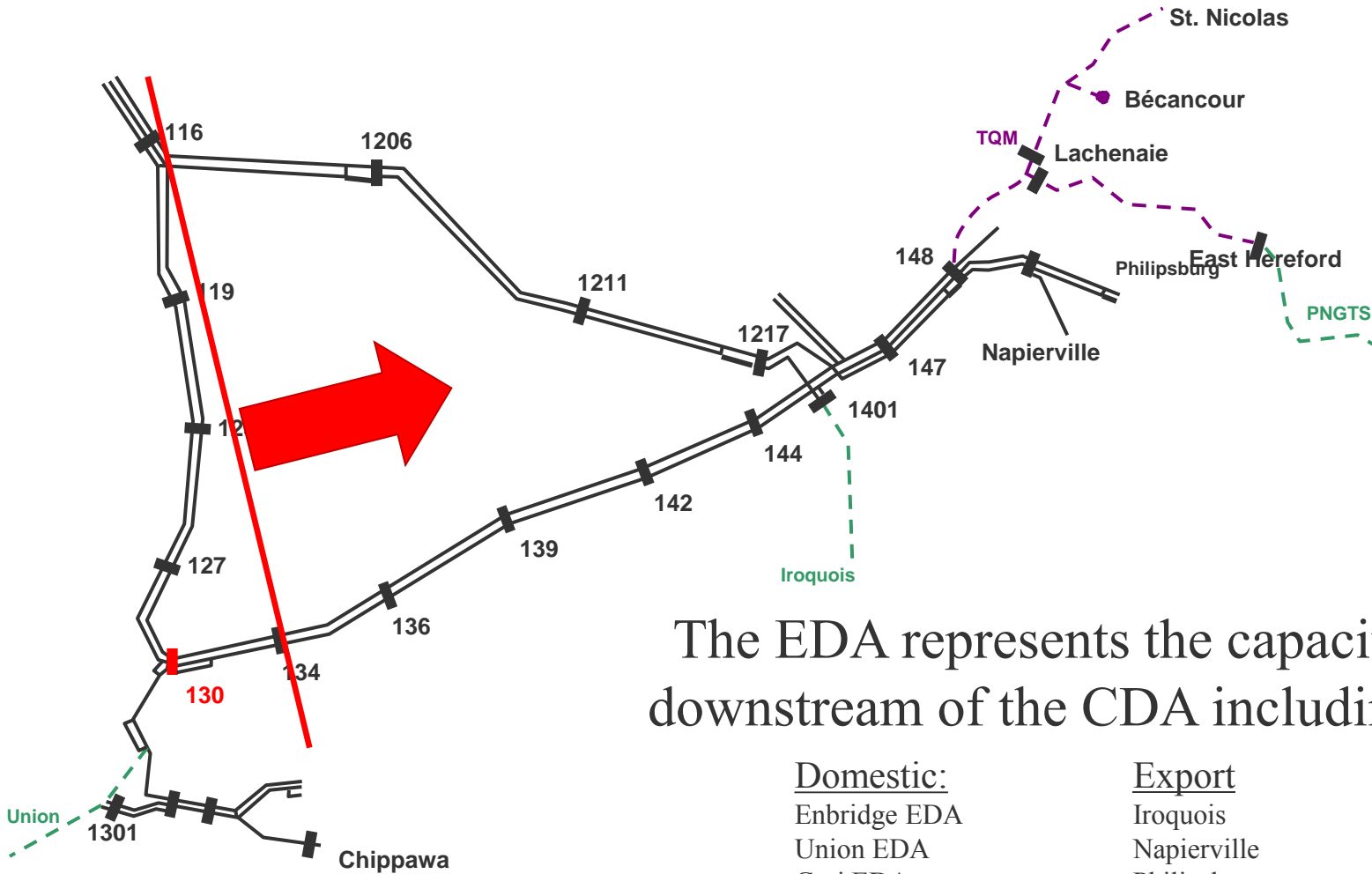
TransCanada PipeLines Ltd.
Non-Critical Notice

Notice Type: Maintenance
Effective Start Date/Time: Sep 28 2013 00:00
Subject: TransCanada Planned Maintenance Sept 28-Oct 4,2013

Below is a summary of forecasted system capabilities for the week beginning September 28, 2013.

	Prairies Line* (TJ)	Northern Ontario Line* (TJ)	Eastern Delivery Area* (TJ)
September 28	4070	2780	2615
September 29	4070	2780	2615
September 30	4070	2780	2615
October 1	4070	2780	2615
October 2	4070	2780	2615
October 3	4070	2780	2615
October 4	4070	2780	2615

What is the EDA?



The EDA represents the capacity downstream of the CDA including:

Domestic:
Enbridge EDA
Union EDA
Gmi EDA
Cornwall

Export
Iroquois
Napierville
Philipsburg
East Hereford



Thank you.





NGTL/Foothills Operations Planning

Commercial Services and Design



Connected Pipelines

Customers

Receipt and Delivery Forecasting
Where and when does gas enter and leave?

Field Operations
Welcome to the real world!

Mainline Facility Planning
What facilities are required?

Operations Planning
How should the facilities operate?

Market Development

Gas Control
Operate according to plan.

Commercial Teams

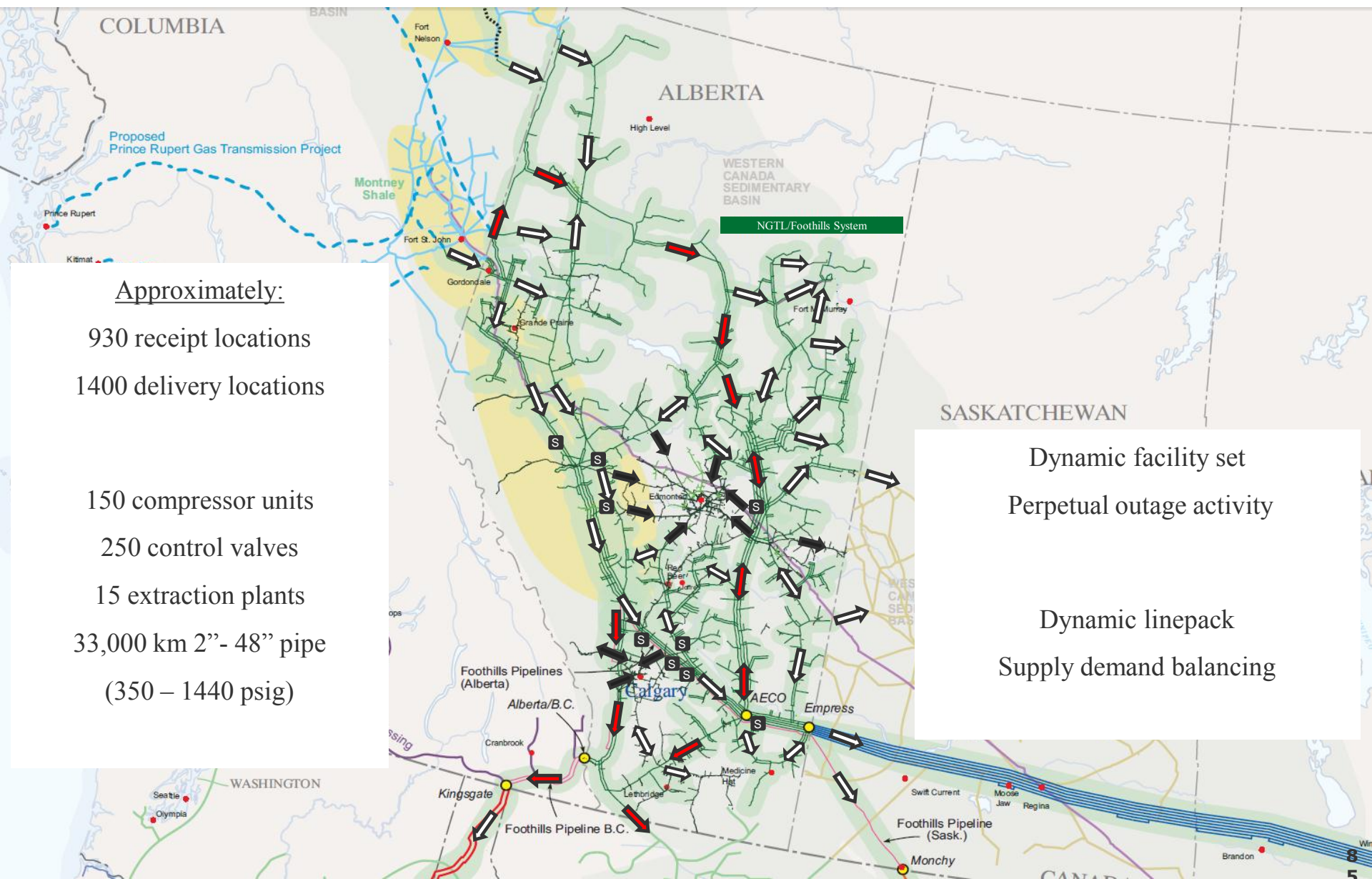
Engineering

Regulators

Lateral/Meter Station/Gas Quality Planning
Sweet, clean, and dry! Where do you need it and when?

Noms and Allocations
Whose gas molecule is that?

NGTL/Foothills System Overview



Approximately:

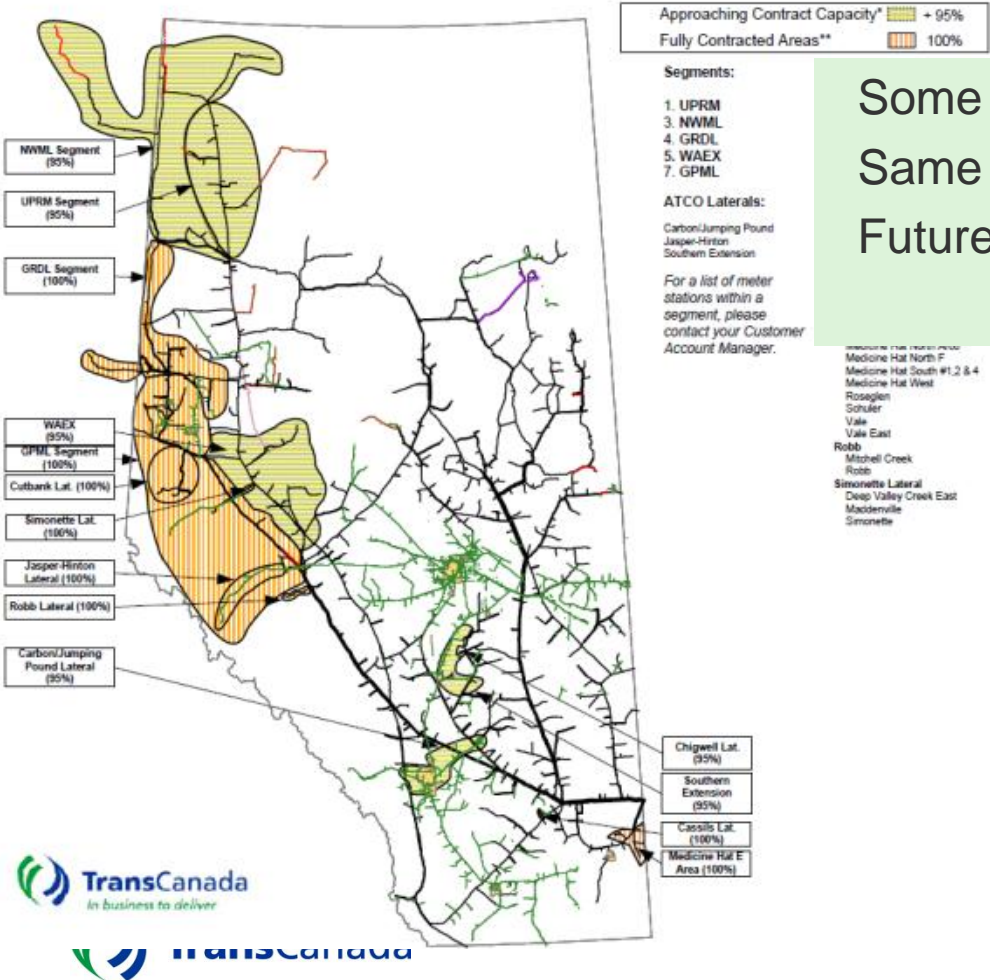
- 930 receipt locations
- 1400 delivery locations
- 150 compressor units
- 250 control valves
- 15 extraction plants
- 33,000 km 2"- 48" pipe
(350 – 1440 psig)

- Dynamic facility set
- Perpetual outage activity
- Dynamic linepack
- Supply demand balancing

Receipt Service Availability

TransCanada's NGTL System FT-R Availability Map as of October 3, 2013

Note: The areas identified on this map are either Approaching Contract Capacity or Fully Contracted (see definitions below). This information is a snap shot as of Oct. 3, 2013 and is subject to change. Please contact your Customer Account Manager for clarification or additional information.



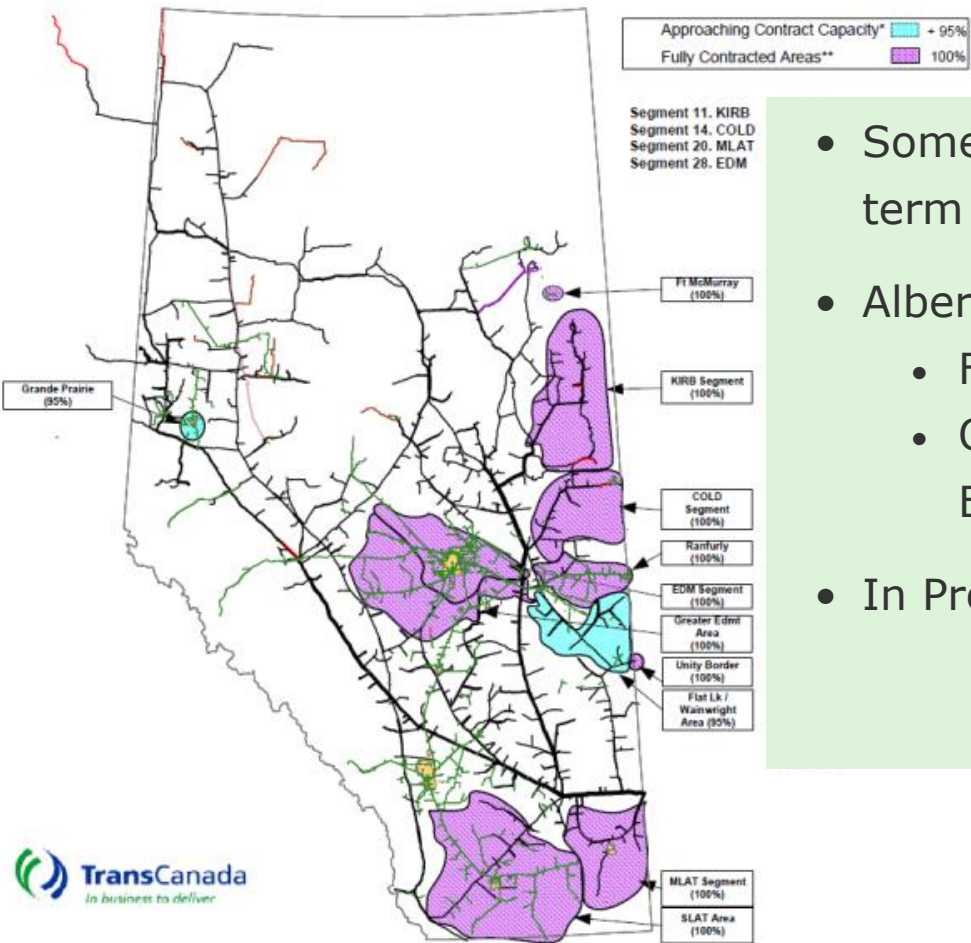
Some areas constrained in the longer term
 Same areas at higher risk during outages
 Future expansion, refer to annual plan



Delivery Service Availability

TransCanada's NGTL System FT-D Availability Map as of October 3, 2013

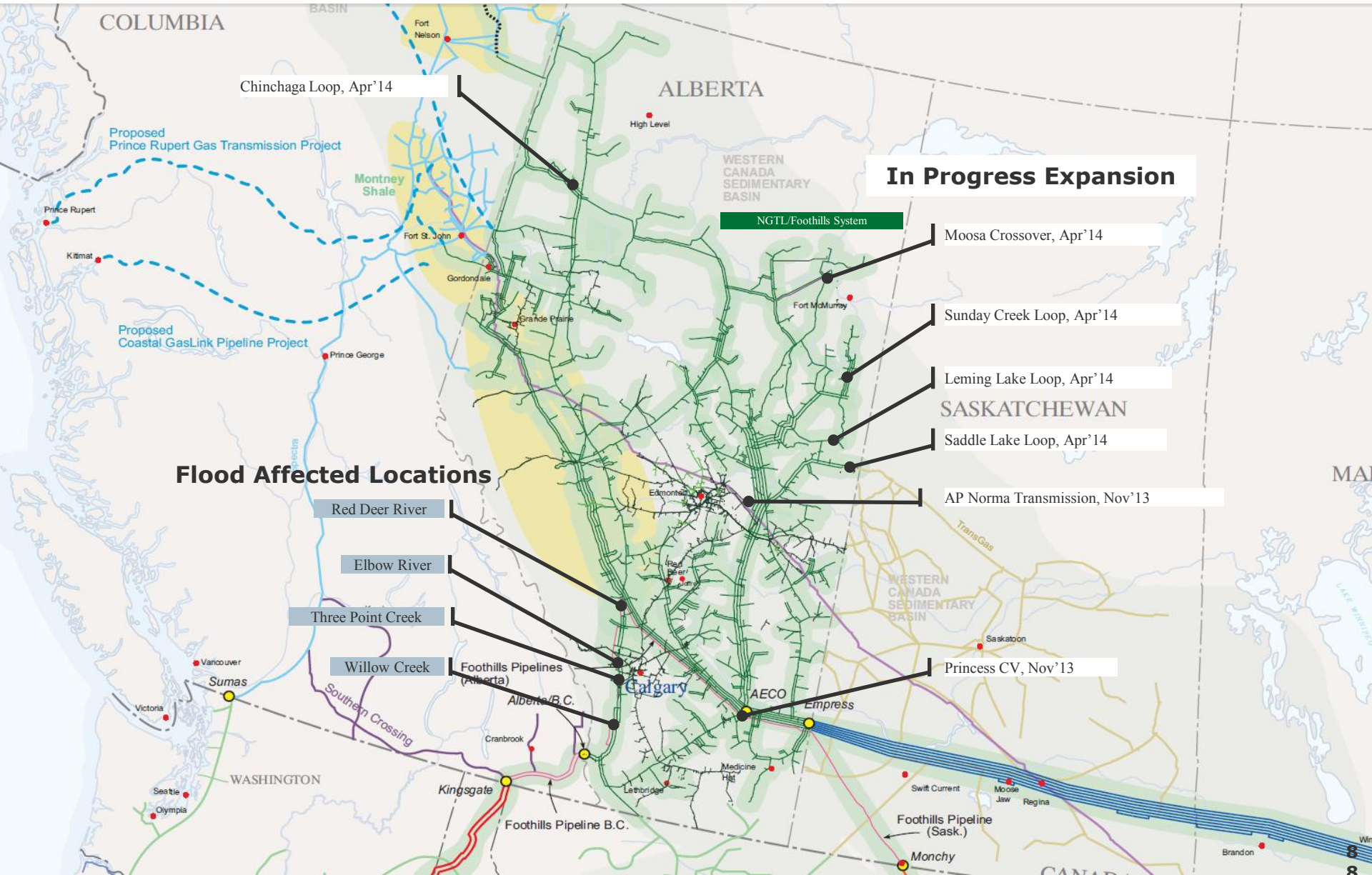
Note: The areas identified on this map are either Approaching Contract Capacity or Fully Contracted (see definitions below). This information is a snapshot as of Oct. 3, 2013 and is subject to change. Please contact your Customer Account Manager for clarification or additional information.



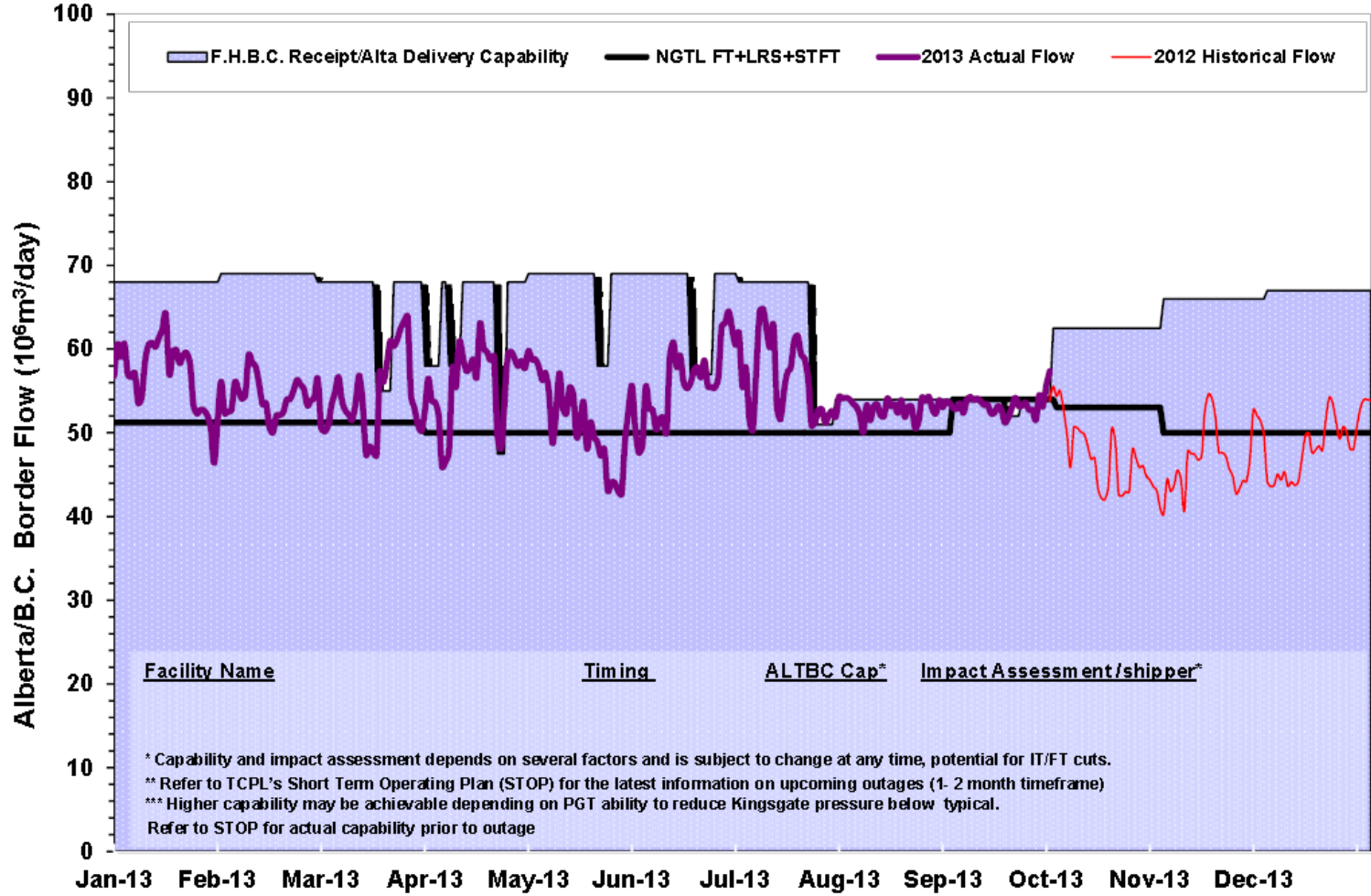
- Some areas constrained in the long and near term
- Alberta-BC, Alberta-Montana Borders
 - Flood related capacity constraints
 - Open Season, refer to Customer Express
- In Progress Expansion



Flood Affected Locations



Alberta B.C. Border Outlook



Operational Reports & Notices

Service Interruptions Short Term Operational Plan AB/BC Outage Forecast

DELIVERY CAPABILITIES - ALBERTA SYSTEM									
BORDER (10 ⁶ m ³ /d)		STORAGE EQUIVALENCIES				OUTAGE DESCRIPTION			
Date	Empress / Michell / JRC	Alberta / BC	AECO / C	Chancellor	Severn / Creek	Carbon	Crossfield		
Dec 13 to Dec 17	178	64	1.0:1	1.1:1	1.1:1	1.1:1	1.2:1	Red Deer River #2, NPS 42 WRS pipe maintenance, NPS 30 Edson H/L pipe maintenance	
Dec 18 to Dec 20	176	64	1.0:1	1.1:1	1.1:1	1.1:1	1.2:1	Red Deer River #2, NPS 42 WRS pipe maintenance, Schrader Creek East #1	
Dec 21 to Dec 26	188	64	1.0:1	1.1:1	1.1:1	1.1:1	1.2:1	Red Deer River #2, NPS 42 WRS pipe maintenance	
Jan 07 to Jan 11	180	59	1.0:1	1.1:1	1.1:1	1.1:1	1.2:1	Red Deer River #2, NPS 42 WRS pipe maintenance, NPS 36 RA, Zone 7 pipe maintenance, Schrader Creek East #1	
Jan 12 to Jan 18	188	64	1.0:1	1.1:1	1.1:1	1.1:1	1.2:1	Red Deer River #2, NPS 42 WRS pipe maintenance	

RECEIPT / METER STATION RESTRICTIONS - BC SYSTEM			
DATE	LOCATION/AREA	ALLOWABLE FLOW (10 ⁶ m ³ /d)	DESCRIPTION
Dec 13 to Jan 18	Alberta/BC Border	80	All facilities available

*Capabilities listed are receipt (takeaway) capabilities from Alberta@B.C., not delivery to Alberta@B.C.

METER STATION RESTRICTIONS - ALBERTA SYSTEM						
Outage ID	Date	Duration	Location/Area	Allowable Flow (10 ⁶ m ³ /d)	Typical Flow (10 ⁶ m ³ /d)	Description
32208	October 28 to December 11	6 weeks	Potential IT Sewer Restriction in Segments 1, 2, 3, 4, 5, 7 and 26	150000	190000	NPS 30 Edson H/L Extension Pipeline Maintenance
33576	December 13 to December 14	2 days	IT Sewer Restriction at Edmonton West, Bonaventure East, Bonaventure	927	1200	NPS 12 Safford Line at 10 Compressor Installation
33576	December 13 to December 14	2 days	Potential IT/FY Gasline Restriction in Seg 20 H/L	6000	5500-6500	NPS 12 Safford Line at 10 Compressor Installation
33574	December 11 to December 13	3 days	Tide Lake	0	140	Meter Station Modifications

TransCanada West Outage Forecast December 2012 as of Nov 30, 2012						
MS#	OUTAGE DESCRIPTION	START	FINISH	RECEIPT/DELIVERY IMPACT	Comment	
1	Schrader Creek C/S - Station Maint (2 days)	03/04/13	03/05/13	Potential IT/FY delivery restriction in AB. Capacity 63 EG. Typical flow 40 - 75 EG.	C	
2	Schrader Creek C/S - Station Maintenance (4 days)	03/20/13	03/27/13	Potential IT delivery restriction at EGAT. Capacity 165 EG. Typical flow 110 - 225 EG.	C	

C/S - Compressor Station
M/S - Meter Station
Equip - contract Gas/Meter at 920-6802

EGAT - Eastern Gas (Edmonton-McNeil Borden)
AL/BC - Alberta/BC Border
F/C/D - Firm Service Contract Demand

Capacity Alert Bulletins Pending Files and Flow Orders

Linepack Management Supply Demand Balancing Tolerance Changes

NOVA Gas Transmission Ltd.
Critical Notice

Notice Type: Capacity Constraint
Effective Start Date/Time: Jun 21 2011 09:00
Subject: NPS 20 Peace River Mainline - Pipe Maint - Update

NPS 20 Peace River Mainline - Pipe Maintenance - Update

The NPS 20 Peace River Mainline pipe maintenance as communicated in the [Outage Forecast](#) and the [Short Term Operational Plan](#) has been extended to June 23, 2011 @ 08:00 MST.

All meter stations in Segment 1 (UPRM) are restricted to a combined flow of 1500 10⁶m³/d or approximately 53.9% of FT-R. The typical aggregate flow for these stations is approximately 2500 10⁶m³/d.

Both East (2182) meter station is silled for the duration of the outage.

All efforts are being taken to maximize capacity, including the use of temporary compression. If in the unforeseen event this temporary compression becomes unavailable, the capacity for those stations listed above will be further reduced to zero.

For further information, please refer to the Short Term Operational Plan or contact The Pipe Line at 920-7473 or toll-free 1-877-920-7473 if you have any questions.

Effective End Date/Time: Jul 31 2011 09:00
Required Response: No response required
Response Date/Time:
Posting Date/Time: Jun 21 2011 13:40
Notice #: 263687801
Revision #: 0

NOVA Gas Transmission Ltd.
Critical Notice

Notice Type: Tolerance Change
Effective Start Date/Time: Jan 23 2011 08:00
Subject: January 23 2011 Potential Tolerance Change Warning

There is potential for an Alberta System tolerance change due to supply demand imbalance leading to high linepack. A tolerance change, if required, will be communicated via Nrg Highway bulletin by 12:00 Calgary time and made effective 08:00 Calgary time for the 23 January, 2011 gas day.

Refer to the [Alberta System Current Report](#) at TransCanada.com for current supply, demand and linepack conditions.

For further questions please contact the call centre in Calgary at 403-920-7473 or toll free at 877-920-7473.kem

Effective End Date/Time: Feb 23 2011 09:00
Required Response: No response required
Response Date/Time:
Posting Date/Time: Jan 23 2011 09:00
Contacts: The Pipe Line (Nrg) 4039207473
Notice #: 258983101
Revision #: 0





Questions ?