



NGTL System and Foothills Pipelines Ltd.

CUSTOMER OPERATIONS MEETING

SEPTEMBER 13, 2022

FOR INFORMATIONAL PURPOSES ONLY

Welcome and Thank You for Joining Us

Participating via WebEx:

- Please sign-in through WebEx application including your full name and company
- To reduce background noise and improve audio quality, all WebEx participants will be placed on mute when entering the meeting
- Please submit your questions via using the raise hand function and coming off mute or the chat function and we will answer at the best possible opportunity



Forward Looking Information

This presentation includes certain forward-looking information. Statements that are forward-looking are based on certain assumptions and on what we know and expect today and generally include words like anticipate, expect, believe, may, will, should, estimate or other similar words.

The information provided is for informational purposes only and is not to be relied upon for any other purpose whatsoever. The information is based upon certain assumptions that may or may not be accurate, and therefore is subject to various risks and uncertainties. TC Energy shall not be liable for damages sustained as a result of any use or reliance on such information.

The outages listed in this presentation are not an exhaustive list. Outage date, duration, and impact may be subject to change. Refer to the Daily Operating Plan (DOP) for all planned outages with potential service impact.

No
impact to FT

Refers to outage periods where FT impact is not expected

Potential
impact to FT

Refers to outage periods where there is potential of FT impact

Partial
impact to FT

Refers to outage periods where FT impact is expected



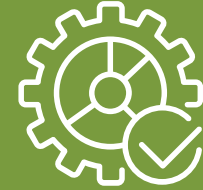
Important Notes



Outage information in this presentation may not be accurate beyond the September 13, 2022 NGTL/Foothills Customer Operations (WebEx only) meeting



For current outage information, please refer to the most recent Daily Operating Plan (DOP) on [my.TC Customer Express](#)



This meeting covers operational and project-related topics on the NGTL and Foothills systems. For information on focused Commercial and Regulatory topics, please contact your Marketing Representative

Agenda

1. Projects Update
2. Review of August Operations
3. Review of DOP Outages
4. Bulletins and Advisory Bulletins Overview
5. Verbal Updates / Q&A



Safety: our first core value



Believe zero is real

All harm, loss and incidents are preventable



Do it right

Today's quality is tomorrow's safety



Take action

Stop unsafe work, actions and behaviours at work and at home 24/7



Learn from each other

Share and apply what we learn



Care and protect

Nothing is more important than the well-being of:

- Our people
- The communities we live and operate in
- The environment

Safety

Innovation

Integrity

Responsibility

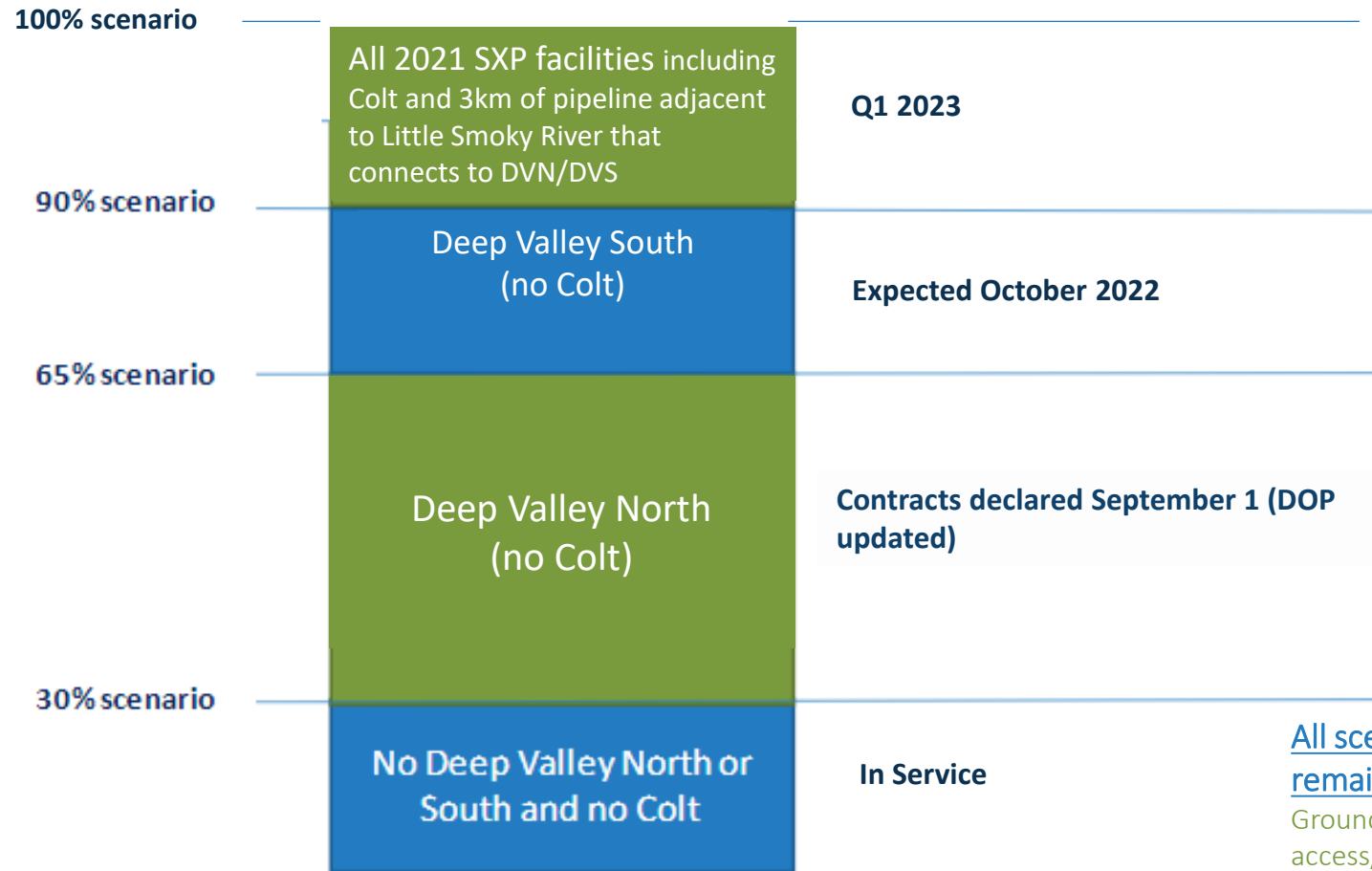
Collaboration



Project Updates

FOR INFORMATIONAL PURPOSES ONLY

2021 Expansion Project Update – ISD Summary (since August 11, 2022 update)



All scenarios and availability of capacity remains subject to:

Ground conditions, weather & road access/conditions, heated labour market, environmental and regulatory requirements and LTO approval by the CER

Note: EDML/Clearwater/West Path 2022 capacity requires 100% of NGTL 2021 Expansions to be in service



2021 Expansion Project Update (since Aug 11, 2022 update)

Facilities already in-service (Map I.D. # 1, 2, 3, 4, 8, 9)

Deep Valley South (DVS) (Map I.D. # 5)

- **Activities remaining:** Caliper, anomaly digs and commissioning
 - Hydrotest successful, caliper run complete and anomaly digs have commenced
- **ISD expected October 2022** (*no change from last communication)

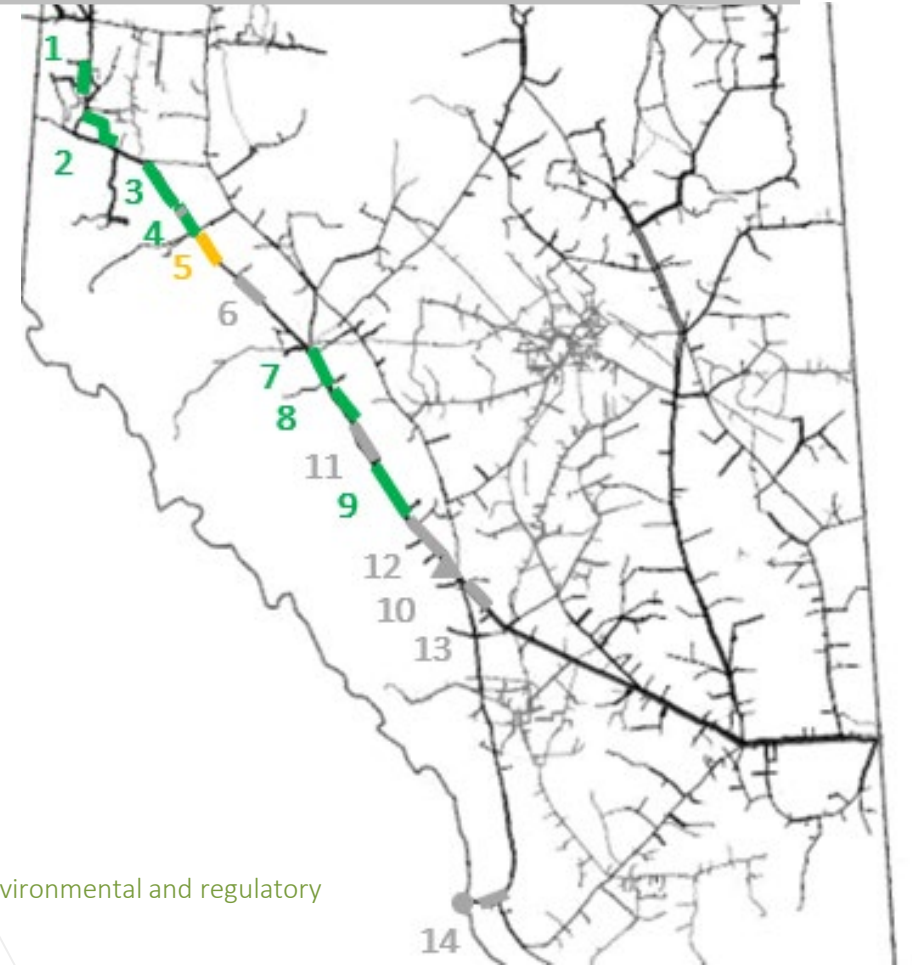
Colt (Map I.D. # 5)

- **Activities remaining:** ~ 9 km of mainline
 - Construction has commenced in high ground areas
- **ISD expected Q1 2023** (*no change from last communication)

3 km of Pipe Adjacent to Little Smoky R that connects DVN/DVS (Map I.D. # 4)

- **Activities remaining:** ~ 3 km of mainline
 - February 15th Caribou RAP
 - Accelerating mainline construction into Q4
- **ISD expected Q1 2023** (*no change from last communication)

Availability of capacity remains subject to: Ground conditions, weather & road access/conditions, heated labour market, environmental and regulatory requirements and LTO approval by the CER



Project team continues to evaluate opportunities to expedite construction safely and in compliance with applicable regulatory requirements



Other Project Updates – ISD Summary

NGTL Projects: *No changes to estimated in-service dates since last update*

Edson Mainline Expansion	ISD Nov 2022
North Corridor Expansion	Bear Canyon, North Star, Red Earth, Hidden Lake North U/A (ISD Apr 2023)
Intra-Basin Expansion	Sunrise, Saturn, Saddle Hills U/A (ISD Nov 2023) Emerson Creek C/S (ISD April 2024)
WestPath 2022/2023	ABC and Raven (ISD Nov 2022) Turner Valley, Lundbreck and Longview (ISD Nov 2023)

FH Projects: *No changes to estimated in-service dates since last update*

Yahk Section Loop	ISD Dec 2022, with potential for Jan 2023 ISD
Elko Section Loop	ISD Nov 2023



Other Project Updates – NGTL

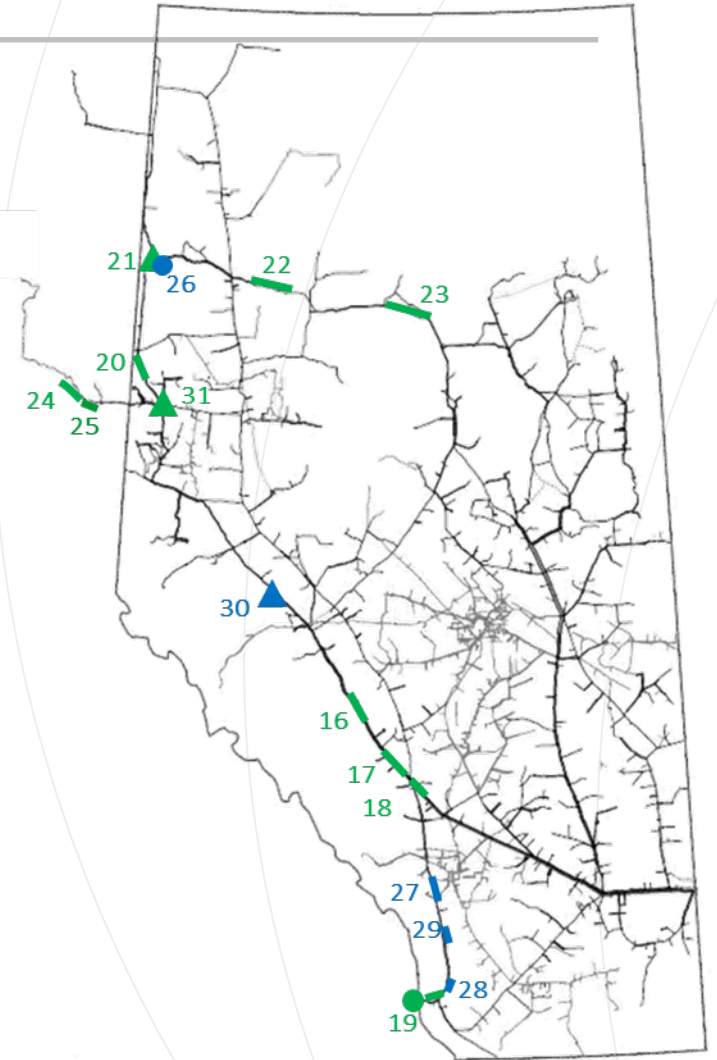
Edson Mainline Expansion

- Elk River (Map I.D. # 16) – mainline construction on track to meet ISD
- Alford Creek (Map I.D. # 17) – mainline construction on track to meet ISD
- ISD November 2022

North Corridor Expansion (Bear Canyon (Map I.D. # 20), North Star (Map I.D. # 22), Red Earth (Map I.D. # 23), Hidden Lake North U/A (Map I.D. #21))

- North Star Construction has kicked off with ROW preparation and camp site preparation is ongoing
- Construction plans continue to be assessed to mitigate risks around Caribou Restrictive Activity Period (RAP) on sections of Red Earth
 - All sections are required to be in service for full NCE capacity
- Hidden Lake North Unit Addition on track
- ISD April 2023

Note: EDML/Clearwater/West Path 2022 capacity requires 100% of NGTL 2021 Expansions to be in service



Other Project Updates – NGTL

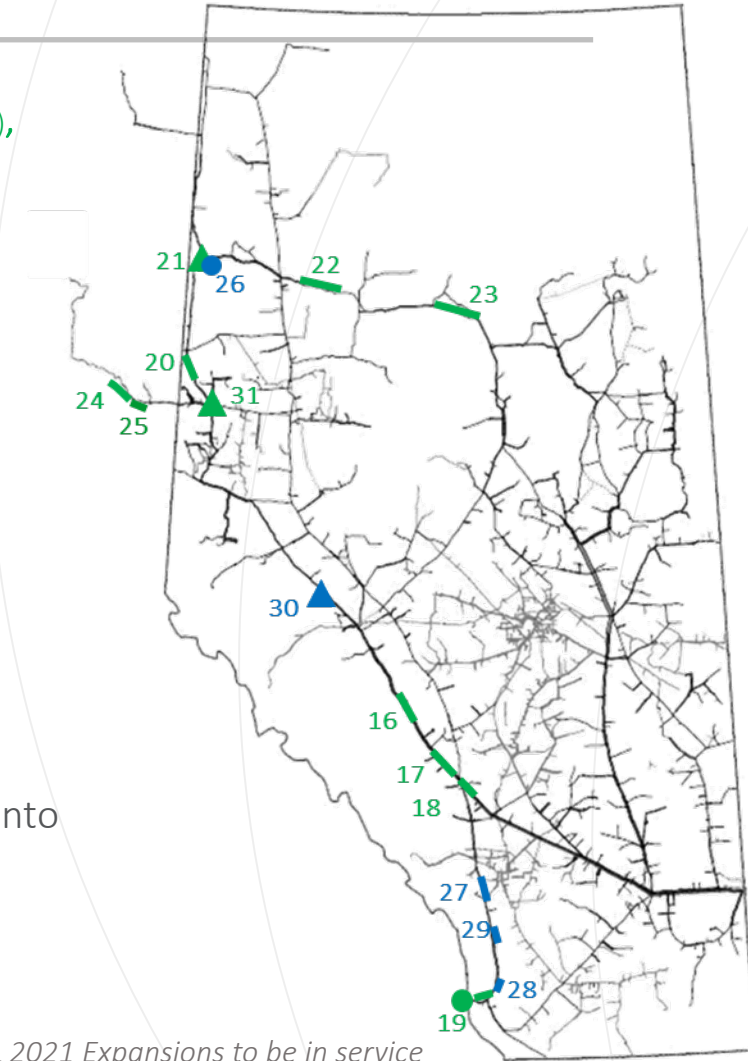
Intra-Basin Expansion (Sunrise (Map I.D. # 24), Saturn (Map I.D. # 25), Emerson Creek C/S (Map I.D. #30), Saddle Hills U/A (Map I.D. #31))

- Sunrise – Prime contractor mobilizing to site
- Saturn pending BC OGC permits – continue consultation with Rightsholder (ISD November 2023)
- Emerson Creek C/S construction commenced in July (ISD April 2024)

West Path 2022/2023

- Raven (Map I.D. # 18) /ABC (Map I.D. # 19) – Mainline construction on track
 - ISD November 2022
- Turner Valley (Map I.D. # 27) /Lundbreck (Map I.D. # 28) /Longview (Map I.D. # 29)
 - CER issued Recommendation report in May 2022. On July 19, 2022, NGTL received notice that the Governor in Council (GIC) decision to grant the Certificate of Public Convenience and Necessity for the NGTL West Path 2023 project had been delayed into November 2022
 - Working closely with other federal agencies to provide the required information for outstanding permits and land rights
 - ISD November 2023

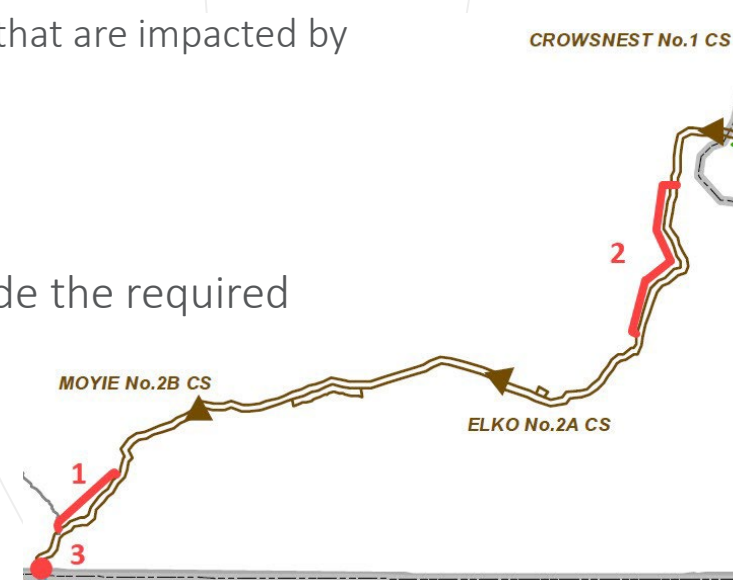
Note: EDML/Clearwater/West Path 2022 capacity requires 100% of NGTL 2021 Expansions to be in service



Other Project Updates – FH

West Path 2022/2023

- **Yahk** (Map I.D. # 1)
 - Grade and blasting progressing
 - Watercourse and road crossing installations are underway
 - **ISD earliest December 2022, potentially into January 2023**
 - This delay is not expected to further impact pending contracts that are impacted by the delay in the full completion of 2021 SXP
- **Elko** (Map I.D. # 2)
 - Clearing is largely complete. Grade and blast progressing
 - Working closely with municipal and federal agencies to provide the required information for outstanding permits and land rights
 - **ISD November 2023**



Note: WestPath 2022 capacity requires 100% of NGTL 2021 Expansions to be in service

Review of August Operations

Berland River Compressor Station Maintenance

Background:

- Planned:
 - Berland River A2 Compressor Unit Maintenance: Aug 8 – 19
 - Berland River Compressor Station Maintenance: Aug 15 – 19
- Capability communicated in DOP:
 - USJR: 325 10⁶m³/d (A2 Unit), 321 10⁶m³/d (Station)
 - EGAT: 138 10⁶m³/d (A2 Unit), 133 10⁶m³/d (Station)
- Service Allowable:
 - USJR: 0% IT-R
 - Lower EGAT: Partial IT-D, 100% FT-D



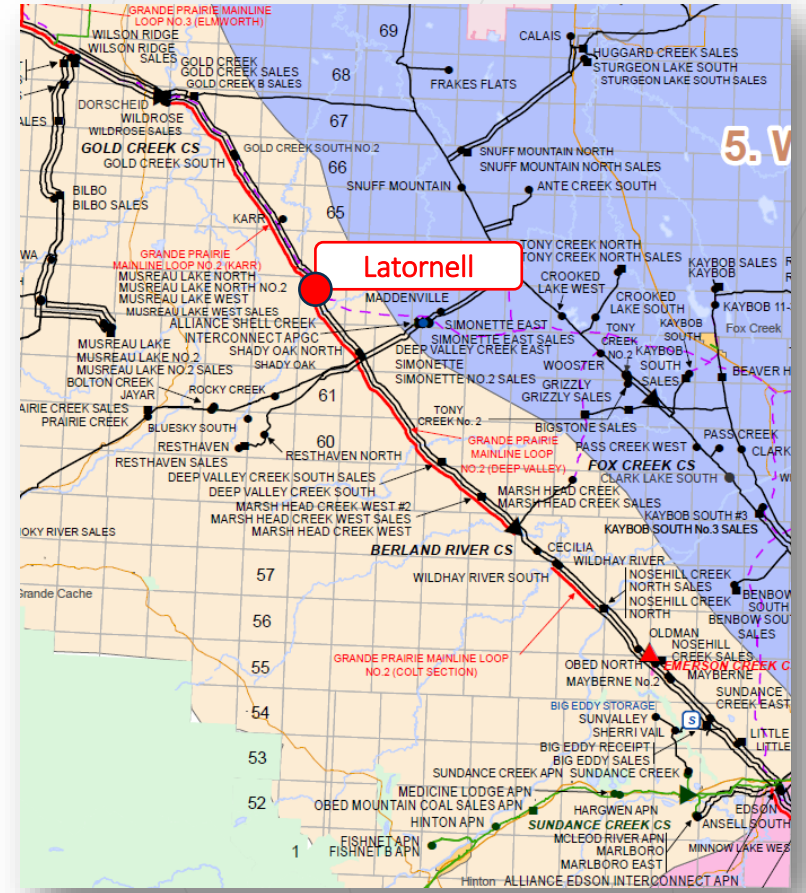
Bulletin Date	Effective Date	Service Allowable	Comments
Aug 3	Aug 8 (08:00 MST)	USJR: 0% IT-R Lower EGAT: Partial IT-D, 100% FT-D	Bulletin issued
			Compressor maintenance completed as scheduled on Aug 19



Latornell Compressor Station Maintenance

Background:

- Planned Latornell Compressor Station Maintenance: Aug 21 – 26
- Capability communicated in DOP:
 - USJR: 326 10⁶m³/d
 - EGAT: 138 10⁶m³/d
- Service Allowable:
 - 0% IT-R (Upstream of Berland River)
 - Partial IT-D, 100% FT-D (Downstream of Berland River, including Lower EGAT)



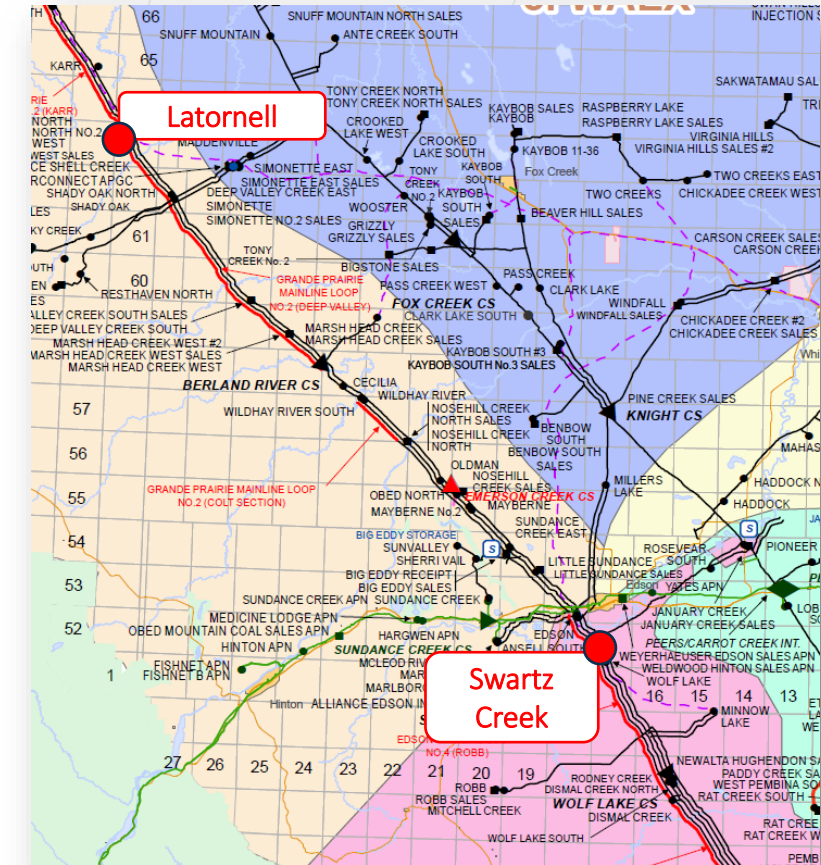
Bulletin Date	Effective Date	Service Allowable	Comments
Aug 17	Aug 21 (08:00 MST)	0% IT-R (Upstream of Berland) Partial IT-D, 100% FT-D (Downstream Berland)	Bulletin issued
Aug 26			A2 unit returns to service as scheduled A1 unit outage delayed until August 29



Swartz Creek A1 + Latornell A1 Compressor Station Maintenance

Background:

- **Unplanned:**
 - Swartz Creek A1 Compressor Station Maintenance (Returned Aug 26)
 - Extension of Latornell A1 Compressor Unit Maintenance (Returned Aug 29)
- **Capability:**
 - USJR: 319 10⁶m³/d
 - EGAT: 131 10⁶m³/d
- **Service Allowable (in consideration of other planned outages starting Aug 27):**
 - USJR: 0% IT-R
 - Greater EGAT: Partial IT-D, 100% FT-D



Bulletin Date	Effective Date	Service Allowable	Comments
Aug 24	Aug 26 (08:00 MST)	USJR: 0% IT-R Greater EGAT: Partial IT-D, 100% FT-D	Bulletin issued for planned Woodenhouse C3, Otter Lake A1, and Hidden Lake North outages
Aug 26			Unplanned outage at Swartz Creek C/S (returned same day) Unplanned extension of Latornell A1 unit work until Aug 29

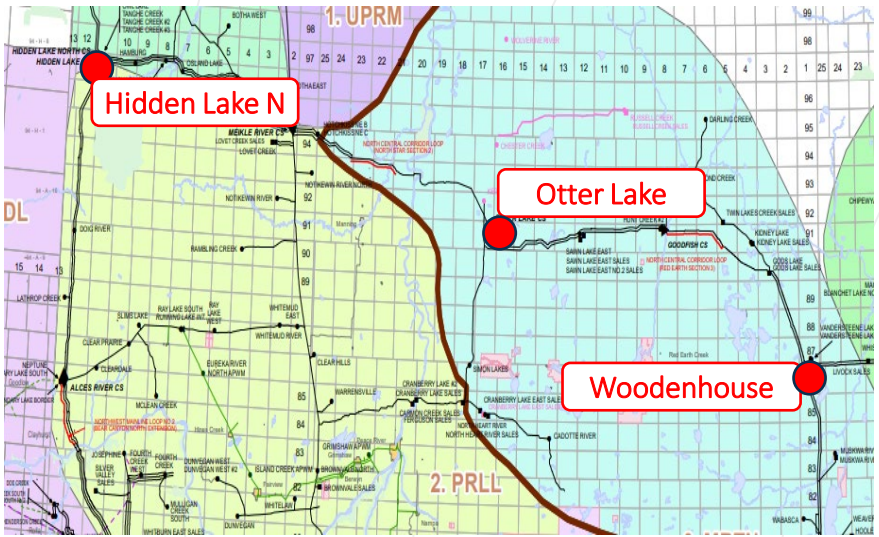


Woodenhouse C3 + Otter Lake A1 + Hidden Lake North Compressor Station Maintenance



Background:

- Planned:
 - Woodenhouse C3 Compressor Station Maintenance: Aug 27 – Sept 2
 - Otter Lake A1 Compressor Station Maintenance: Aug 27 – Sept 2
 - Hidden Lake North Compressor Station Maintenance: Aug 28 – Sept 7
- Capability communicated in DOP:
 - USJR: 324 10⁶m³/d (Aug), 336 10⁶m³/d (Sept)
 - EGAT: 137 10⁶m³/d (Aug), 137 10⁶m³/d (Sept)
- Service Allowable:
 - USJR: 0% IT-R
 - Greater EGAT: Partial IT-D, 100% FT-D



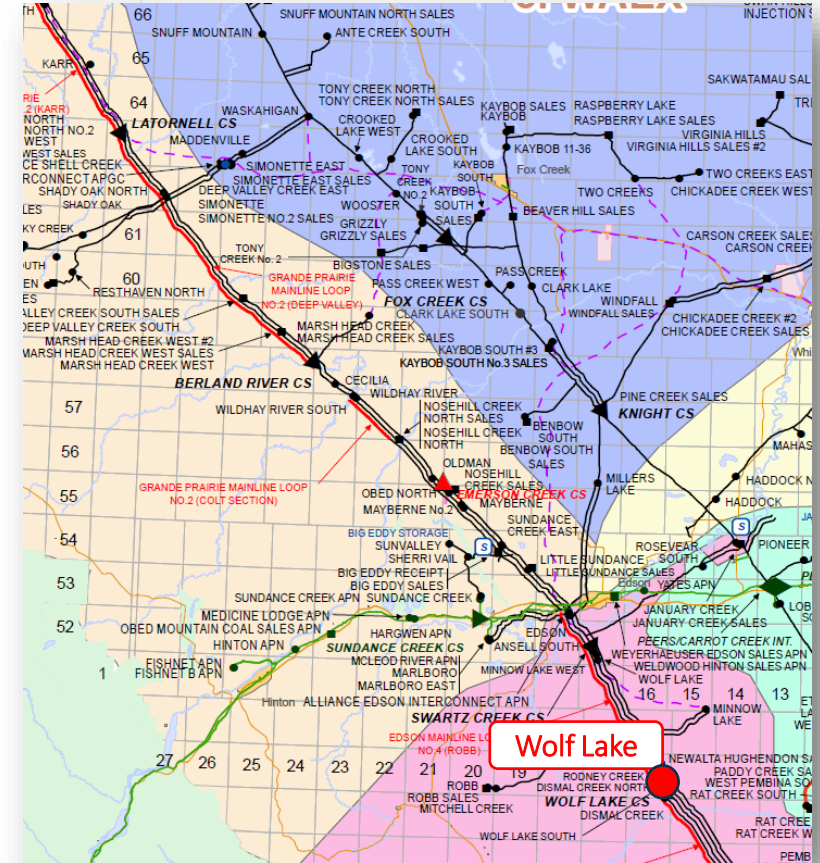
Bulletin Date	Effective Date	Service Allowable	Comments
Aug 24	Aug 26 (08:00 MST)	USJR: 0% IT-R Greater EGAT: Partial IT-D, 100% FT-D	Bulletin issued
Sept 1	Sept 8 (08:00 MST)	USJR: 0% IT-R Lower EGAT: Partial IT-D, 100% FT-D	Compressor maintenance completed as scheduled



Wolf Lake Compressor Station Maintenance

Background:

- Planned:
 - Wolf Lake A3 Compressor Station Maintenance (Ongoing): Sep 7 - 18
- Capability:
 - USJR: 343 10⁶m³/d
 - EGAT: 145 10⁶m³/d
- Service Allowable:
 - USJR: 0% IT-R
 - Lower EGAT: Partial IT-D, 100% FT-D

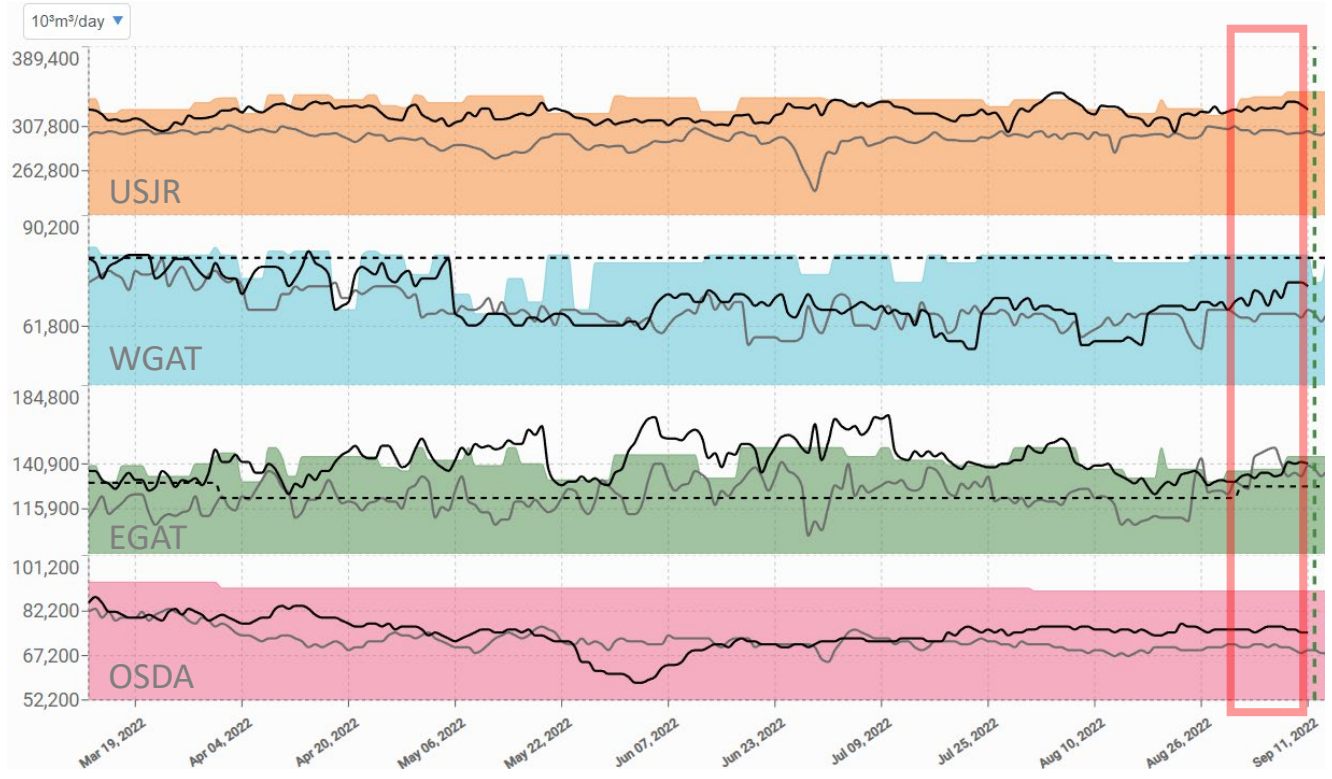


Bulletin Date	Effective Date	Service Allowable	Comments
Sep 1	Sep 8 (08:00 MST)	USJR: 0% IT-R Lower EGAT: Partial IT-D, 100% FT-D	Bulletin issued for planned Wolf Lake A3 C/S Maintenance
Sep 18			Compressor maintenance on track to be completed as scheduled



EGAT Authorization Levels

Why was the EGAT authorization level below the stated capacity in DOP?



- **Higher Ambient Temperatures**
 - High ambient temperatures across the province resulting in lower system throughput efficiency
- **Higher West Gate demand**
 - Higher WGAT demand due to completion of downstream interconnecting maintenance that had been limiting flows down the full path
- **Strong supply in West of Saddle area**
 - Supply in the West of Saddle area remained strong and mostly unchanged despite the broad area restriction in place
 - Field receipts decreased in USJR; however, was in areas with a lower hydraulic equivalency requiring a further reduction in EGAT authorization to manage supply upstream of the bottleneck



Review of DOP Outages

From DOP as of Monday, September 12

Daily Operating Plan (DOP) – Current Assumptions

- Contracts tied to Deep Valley North (65% scenario) declared on September 1, 2022
- September 1 to 30, 2022 assumes all 2021 expansion facilities are in-service with the exception of Deep Valley South, Colt section and 3km of pipeline adjacent to Little Smoky River that connects to DVN/DVS
- Beyond October 1, 2022 assumes all 2021 expansion facilities are in-service with the exception of the Colt section and 3km of pipeline adjacent to Little Smoky River that connects to DVN/DVS (90% scenario)

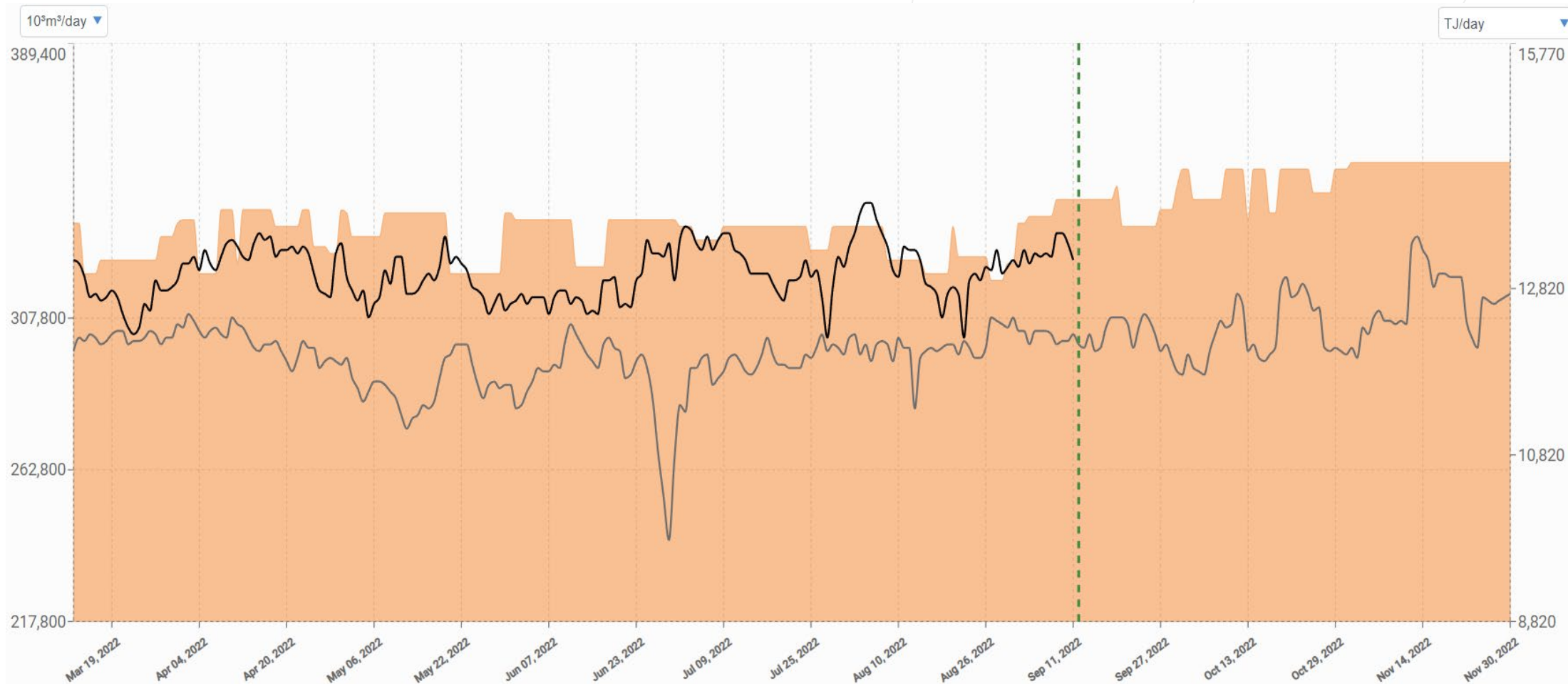
Outages and/or maintenance work is posted to the DOP if there is reasonable expectation that the event could or will result in a change to service authorization levels.

Optimization efforts are ongoing and we will continue focus on safety, optimizing system capacity, and minimizing outage impacts.



Upstream James River

Capability - Actual Flow - Historical Flow



This slide may not be accurate beyond the September 13 NGTL/Foothills Customer Operations meeting on WebEx. Please refer to the DOP on TC Customer Express for current outage information





Upstream James River Receipt Area (USJR)

No impact to FT

Potential impact to FT

Partial impact to FT

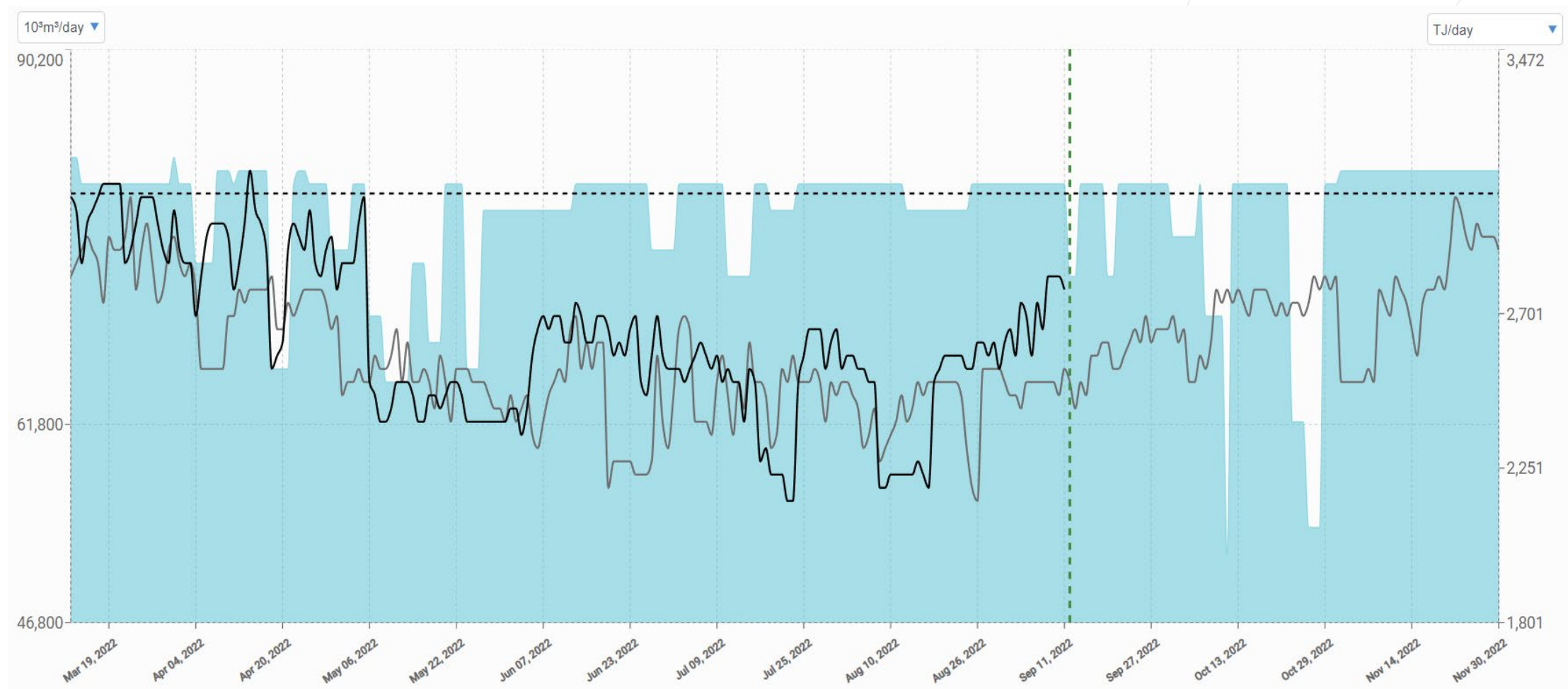
Outage Description	Start	End	USJR Outage Capability (10 ⁶ m ³ /d)	USJR Impact (10 ⁶ m ³ /d)	Area Outage Capability (10 ⁶ m ³ /d)	Outage Area Typical Flows (10 ⁶ m ³ /d)	Service Allowable Location/Area
Wolf Lake A3 – Compressor Station Maintenance	7-Sept-22	18-Sept-22	343	4	N/A	280-320	Potential impact to FT-R USJR
Nordegg B3 & B5 – Compressor Station Maintenance	20-Sept-22	26-Sept-22	335	12	N/A	280-320	Potential impact to FT-R USJR
Meikle River B2 – Compressor Station Maintenance	27-Sept-22	29-Sept-22	340	7	N/A	280-320	Potential impact to FT-R USJR
Otter Lake – Compressor Station Maintenance	3-Oct-22	8-Oct-22	343	9	N/A	280-320	Potential impact to FT-R USJR
Saddle Hills B3 – Compressor Station Maintenance	13-Oct-22	13-Oct-22	337	15	214	160-190	Potential impact to FT-R USJR U/S of Latornell
Paul Lake – Compressor Station Maintenance	17-Oct-22	18-Oct-22	339	13	N/A	280-320	Potential impact to FT-R USJR
Alces River – Compressor Station Maintenance	17-Oct-22	18-Oct-22	340	12	N/A	280-320	Potential impact to FT-R USJR
Clearwater – Compressor Station Maintenance	25-Oct-22	28-Oct-22	345	7	N/A	280-320	Potential impact to FT-R USJR

This slide may not be accurate beyond the September 13 NGTL/Foothills Customer Operations meeting on WebEx. Please refer to the DOP on TC Customer Express for current outage information





Alberta-B.C. Border (includes both NGTL and Foothills BC outages)



This slide may not be accurate beyond the September 13 NGTL/Foothills Customer Operations meeting on WebEx. Please refer to the DOP on TC Customer Express for current outage information



West Gate Delivery Area (WGAT)

Foothills Zone 8 (FHBC)

No
impact to FT

Potential
impact to FT

Partial
impact to FT

Outage Description	Start	End	Capability/ Allowable (10 ⁶ m ³ /d)	Impact (10 ⁶ m ³ /d)	System	Service Allowable Location/Area
Crowsnest K – Compressor Station Maintenance*	12-Sept-22	13-Sept-22	73	7	FHBC	Potential Impact to FT Alberta/BC Border Foothills BC
Burton Creek – Compressor Station Maintenance*	19-Sept-22	20-Sept-22	73	7	NGTL	Potential Impact to FT Alberta/BC and Alberta/Montana Borders
Turner Valley A1 and A2 – Compressor Station Maintenance*	1-Oct-22	5-Oct-22	76	4	NGTL	Potential Impact to FT-D Alberta/BC and Alberta/Montana Borders
NPS 42 Western Alberta System Mainline Loop – Pipeline Maintenance	7-Oct-22	10-Oct-22	70	10	NGTL	Potential Impact to FT-D Alberta/BC and Alberta/Montana Borders
NPS 42 Western Alberta System Mainline Loop – Pipeline Maintenance	11-Oct-22	11-Oct-22	52	28	NGTL	Potential Impact to FT-D Alberta/BC and Alberta/Montana Borders
NPS 36 BC Mainline – Pipeline Maintenance	23-Oct-22	25-Oct-22	62	18	FHBC	Potential Impact to FT Alberta/BC Border Foothills BC
NPS 36 BC Mainline – Pipeline Maintenance	26-Oct-22	28-Oct-22	54	26	FHBC	Potential Impact to FT Alberta/BC Border Foothills BC

*Aligned with downstream maintenance that is expected to be limiting West Path capability

Note: Outages located in the USJR area show up in the WGAT table in DOP to indicate a broad area restriction could be applied to reduce flows through the bottleneck but have been excluded from this slide to avoid duplication

This slide may not be accurate beyond the September 13 NGTL/Foothills Customer Operations meeting on WebEx. Please refer to the DOP on TC Customer Express for current outage information

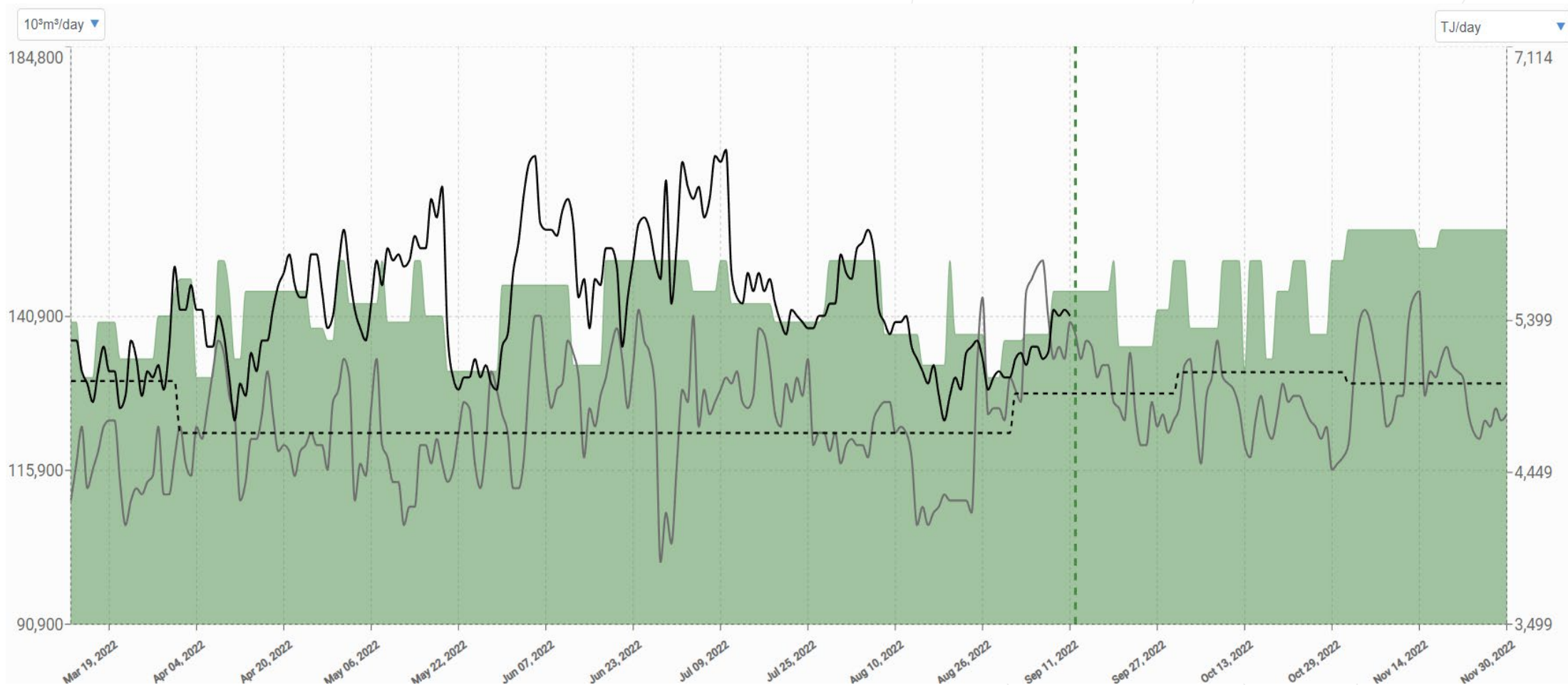




For the purposes of the operational capability charts and outage impacts, NGTL has assumed the 65% scenario as of Sept 1, 2022 and the 90% scenario as of Oct 1, 2022 for East Gate and USJR. As of August 29, 2022, this is the most likely scenario NGTL expects but may be subject to change based on changing circumstances.

East Gate

■ Capability — Actual Flow — Historical Flow - - - Contracts



This slide may not be accurate beyond the September 13 NGTL/Foothills Customer Operations meeting on WebEx. Please refer to the DOP on TC Customer Express for current outage information





East Gate Delivery Area (EGAT)

No
impact to FT

Potential
impact to FT

Partial
impact to FT

Outage Description	Start	End	Capability (10 ⁶ m ³ /d)	Impact (10 ⁶ m ³ /d)	System	Service Allowable Location/Area
Acme – Compressor Station Maintenance	12-Sep-22	18-Sep-22	145	5	FHAB	No impact to FT-D anticipated Empress/McNeill Borders Segments 15, 16, 17, 18, 19, 20, 23, partial 21, and partial 28
Schrader Creek East A3 – Compressor Station Maintenance	17-Oct-22	21-Oct-22	145	5	FHAB	No impact to FT-D anticipated Empress/McNeill Borders Segments 15, 16, 17, 18, 19, 20, 23, partial 21, and partial 28
Clearwater – Compressor Station Maintenance	25-Oct-22	28-Oct-22	138	12	NGTL	No impact to FT-D anticipated Empress/McNeill Borders Segments 15, 16, 17, 18, 19, 20, 23, partial 21, and partial 28
Beiseker B3 – Compressor Station Maintenance	14-Nov-22	17-Nov-22	152	3	NGTL	No impact to FT-D anticipated Empress/McNeill Borders Segments 15, 16, 17, 18, 19, 20, 23, partial 21, and partial 28

Note: Outages located in the USJR area show up in the EGAT table in DOP to indicate a broad area restriction could be applied to reduce flows through the bottleneck but have been excluded from this slide to avoid duplication

Beyond these known events impacting EGAT capability, NGTL continues to execute plans to address concerns raised by landowners regarding noise levels at one of our compressor stations.

This slide may not be accurate beyond the September 13 NGTL/Foothills Customer Operations meeting on WebEx. Please refer to the DOP on TC Customer Express for current outage information





Foothills Zone 9 (FHSK)

No
impact to FT

Potential
impact to FT

Partial
impact to FT

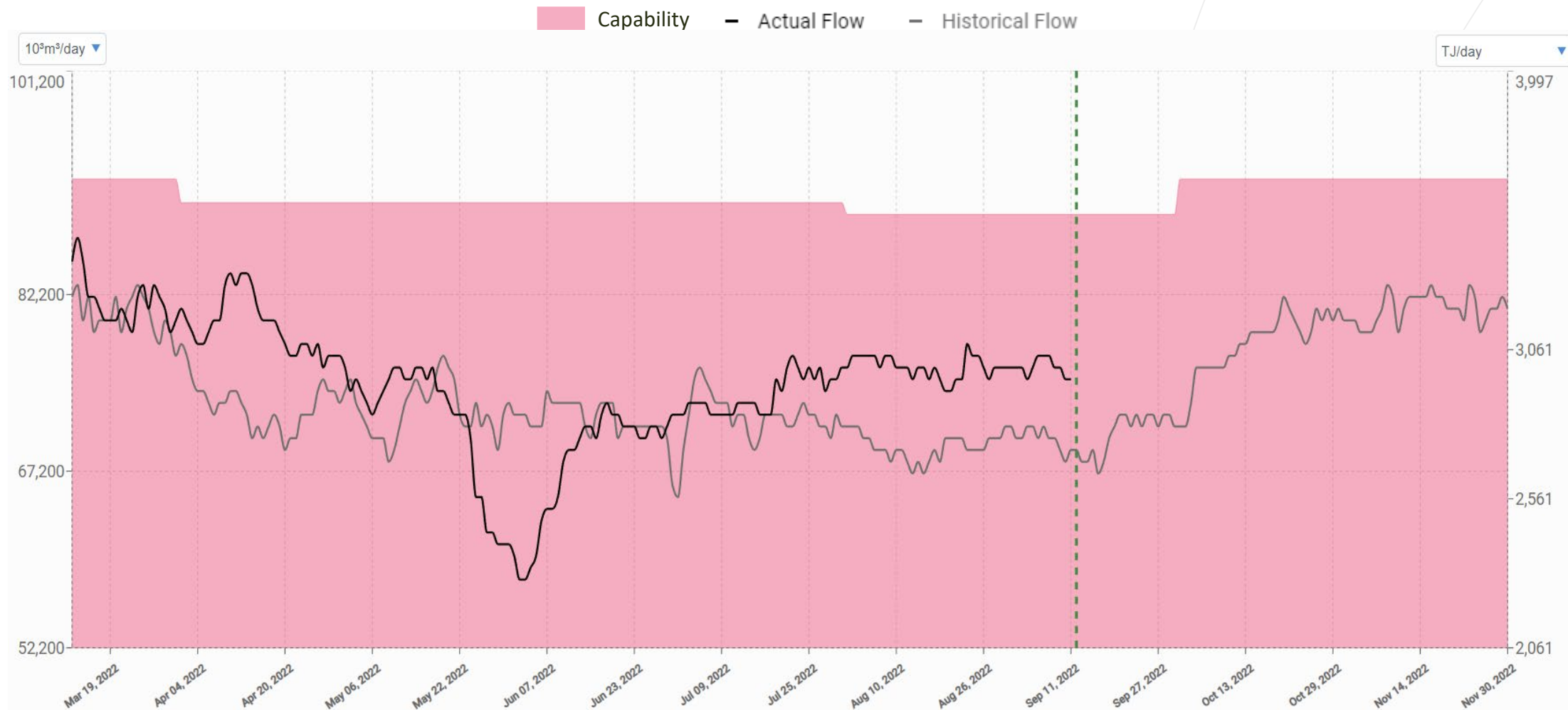
Outage Description	Start	End	Capability (10 ⁶ m ³ /d)	System	Service Allowable Location/Area
NPS 42 Foothills Mainline Zone 9 – Pipeline Maintenance	16-Nov-22	28-Nov-22	25	FHSK	No impact to FT anticipated Monchy Border Foothills Saskatchewan

This slide may not be accurate beyond the September 13 NGTL/Foothills Customer Operations meeting on WebEx. Please refer to the DOP on TC Customer Express for current outage information





Oil Sands Delivery Area



This slide may not be accurate beyond the September 13 NGTL/Foothills Customer Operations meeting on WebEx. Please refer to the DOP on TC Customer Express for current outage information





Northeast Delivery Area (NEDA) Oil Sands Delivery Area (OSDA)

No
impact to FT

Potential
impact to FT

Partial
impact to FT

There are currently no outages planned that are specific to OSDA or NEDA

This slide may not be accurate beyond the September 13 NGTL/Foothills Customer Operations meeting on WebEx. Please refer to the DOP on TC Customer Express for current outage information



Bulletins and Advisories Overview


Service Bulletins

Purpose:

To communicate when there is a **change to service authorization (FT or IT) or area of impact**

Timing:

- Planned outages: 2 business days prior
- Unplanned outages: as early as possible before the next available nomination cycle (if immediate response required)



NGTL Non-Critical Notice

Notice Type: Capacity Constraint **Effective Start Date Time:** Sep 01, 2022 16:35 CCT **Subject:** NGTL Service (EGAT IT-D)

NGTL Service (EGAT IT-D)

USJR: Planned maintenance at the Woodenhouse C3, Otter Lake A1, and Hidden Lake North Compressor Stations is currently progressing well and on schedule. Due to upcoming planned maintenance on the Wolf Lake A3 (18787620) and Nordegg B3 and B5 (18386862) Compressor Stations, service allowable for Segments 2, 3, 4, 7, partial 8 and partial 9 will remain at 0% IT-R and 100% FT-R until further notice.

WGAT: N/A

EGAT: Planned maintenance at the Woodenhouse C3, Otter Lake A1, and Hidden Lake North Compressor Stations is currently progressing well and on schedule. Due to upcoming planned maintenance on the Wolf Lake A3 (18787620) and Nordegg B3 and B5 (18386862) Compressor Stations, service allowable for Segments 6, 10, 11, 12, 13, 14 will transition from Partial IT-D and 100% FT-D to 100% IT-D and 100% FT-D effective September 8, 2022 at 08:00 MST. Segments 15, 16, 17, 18, 19, 20, 23, partial 21, and partial 28 (Lower EGAT) will remain at Partial IT-D and 100% FT-D until further notice. Please refer to the [NGTL System Dashboard](#) which is updated daily with the current day and next day prediction of authorization levels.

Local Area/Location: N/A

New Information
Updated Information

Current and upcoming outages						
Outage ID	Start	End	Facility/Outage Name	Facility Type/Scope	Outage Type	Area of Impact
18374031	Aug 27, 2022	Sep 02, 2022	Woodenhouse C3 and Otter Lake A1	Compressor Maintenance	Planned	USJR, EGAT
18372621	Aug 28, 2022	Sep 07, 2022	Hidden Lake North	Compressor Maintenance	Planned	USJR, EGAT
18787620	Sep 07, 2022	Sep 18, 2022	Wolf Lake A3	Compressor Maintenance	Planned	USJR, EGAT
18386862	Sep 20, 2022	Sep 26, 2022	Nordegg B3 and B5	Compressor Maintenance	Planned	USJR, EGAT

Upstream James River Receipt Area						
Effective:	August 27, 2022 at 08:00 MST	IT Allowable: 0%	IT-R	IT-S (receipt)		
Expected End:	Until further notice	FT Allowable: 100%	FT-R	FT-P		
Interconnects:	Aitken Creek, Big Eddy, Groundbirch East, Gordondale, January Creek					
Segments:	2, 3, 4, 5, 7, partial 8, and partial 9					



Advisory Bulletins

Purpose:

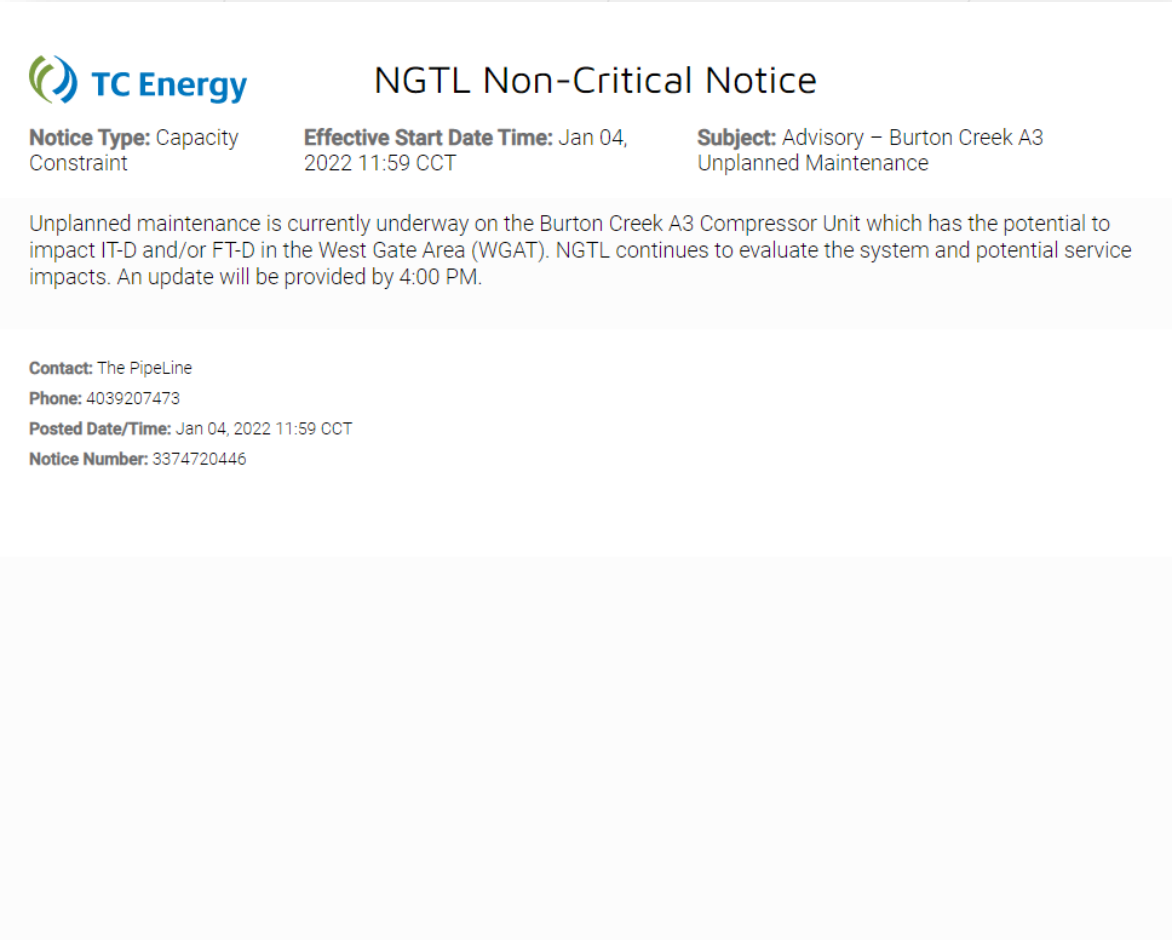
To communicate **unplanned outages** that may threaten **FT service**.

Typically:

- Cause of outage is under investigation
- Timeline for return to service unknown
- High risk to FT service if facility not returned in short order

Timing:

- As early as possible when there is risk FT service could be impacted



The screenshot shows an email header for a TC Energy NGTL Non-Critical Notice. The header includes the TC Energy logo, the notice type (Capacity Constraint), the effective start date and time (Jan 04, 2022 11:59 CCT), and the subject (Advisory – Burton Creek A3 Unplanned Maintenance). The main body of the email states that unplanned maintenance is currently underway on the Burton Creek A3 Compressor Unit, which has the potential to impact IT-D and/or FT-D in the West Gate Area (WGAT). NGTL continues to evaluate the system and potential service impacts, and an update will be provided by 4:00 PM. The footer of the email provides contact information for The PipeLine, including a phone number (4039207473), the posted date and time (Jan 04, 2022 11:59 CCT), and the notice number (3374720446).



NGTL System Dashboard

Purpose:

To communicate current and next gas day capacity.

Timing:

- Every Morning at 8:30am

Dashboard				
SHOW: E6M3				
Area	CAPABILITY AUTHORIZED *			CAPABILITY FORECAST *
	Current Gas Day (E6M3/day)	Current Gas Day FT **	Current Gas Day IT **	Next Gas Day (E6M3/day)
EGAT	145	100%	10%	145
WGAT		100%	100%	
Foothills SK		100%	100%	
Foothills BC		100%	100%	
OSDA		100%	100%	
Greater USJR	343	100%	0%	343

* *Bulletins* supercede any of this information

** Authorized allowable percentage based on Evening Cycle Authorizations

NOTE: - Heating value assumed is 38.5, TC's default average

Capability data updated daily at 8:30am MDT.
Last Updated: **2022-09-12**

[download historical CSV file \(E6M3\)](#)



Verbal Updates & Q&A

Contacts

RYAN CORMACK

Central Geo-Lead, Operations

403.920.2102

ryan_cormack@tcenergy.com



KRISTI ENG

Supervisor, Operations Planning - West

403.920.7749

kristi_eng@tcenergy.com

MINH BADAU

Chair, NGTL/FH Customer Ops

403.920.5804

minh_badau@tcenergy.com



TAMMY MANZ
Manager, Gas Pipeline
Implementation Projects
403.920.6330
tammy_manz@tcenergy.com

KRISTI ENG
Supervisor, Operations Planning - West
403.920.7749
kristi_eng@tcenergy.com

MINH BADAU
Chair, NGTL/FH Customer Ops
403.920.5804
minh_badau@tcenergy.com

