



2021 Expansion Update

MARCH 24, 2022

FOR INFORMATIONAL PURPOSES ONLY

2021 NGTL Expansion

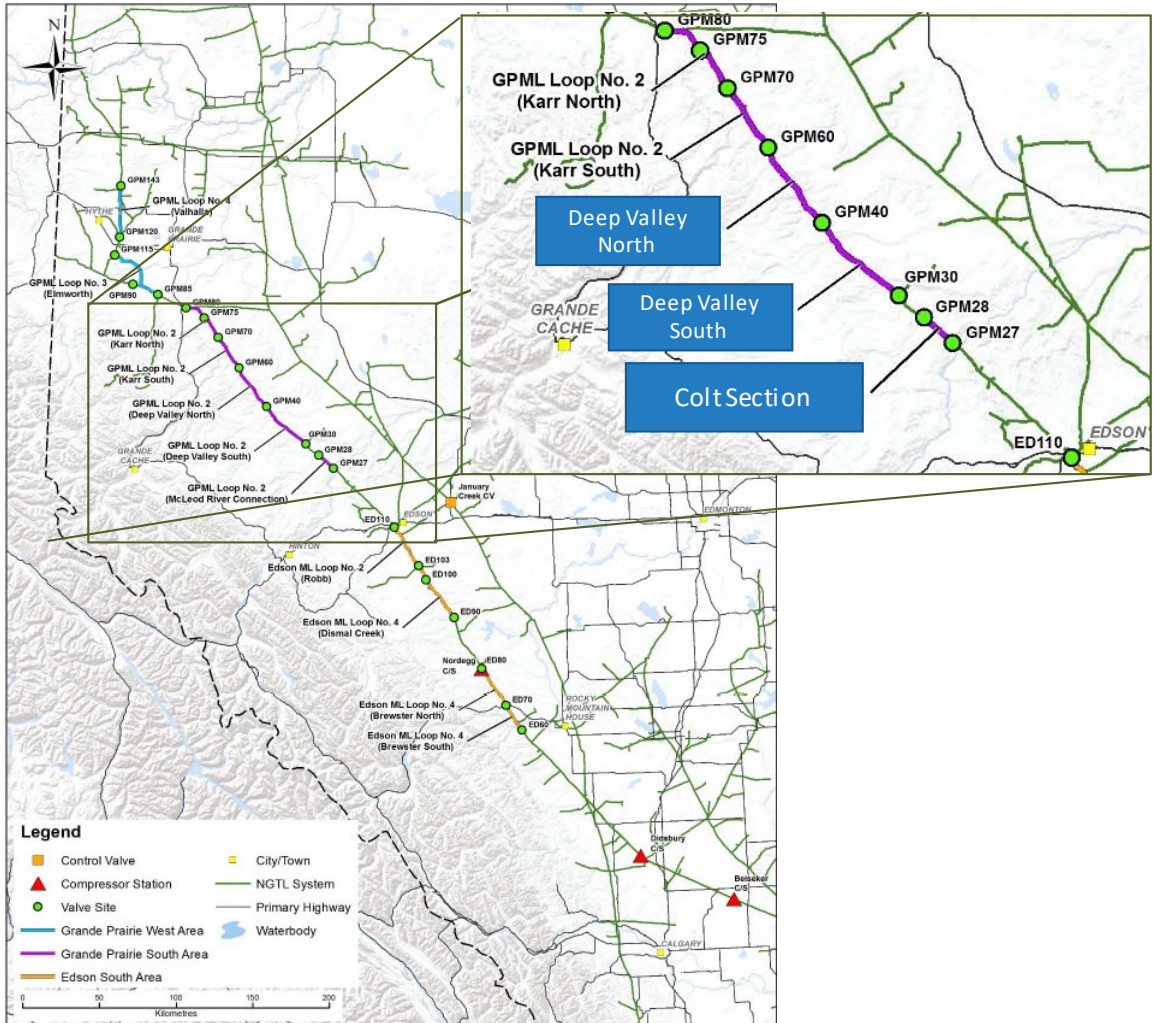


Project Components

~345km NPS 48 Pipeline
3 x 30 MW Compressor units
1 x Control valve

Majority of the facilities will be completed and placed into service in late April and throughout May to provide up to 1.3 Bcf/d, which is approximately 90% of the Project's total capacity.

2021 NGTL Expansion



Approximately 30km remaining to be completed within the Deep Valley and Colt area.

Construction progress and facility in-service dates remain subject to certain ongoing construction and commissioning factors outside of NGTL’s control (e.g. weather and ground conditions, current labour market conditions etc.) as well as final technical in-service approvals by the Canada Energy Regulator.

Project facilities completed and placed into service during April and May, may be variable and result in a range of actual Project capacity being available - between 0.94 Bcf/d (65%) and up to 1.3 Bcf/d (90%) of the Project’s total capacity.

Further, until the Project facilities are in service NGTL does not have system capacity to declare contracts dependent on the Clearwater Unit Addition, Edson Mainline Expansion Project and West Path Delivery 2022 Project.



Review of DOP Outages

From DOP as of Wednesday, March 23

MARCH 24, 2022

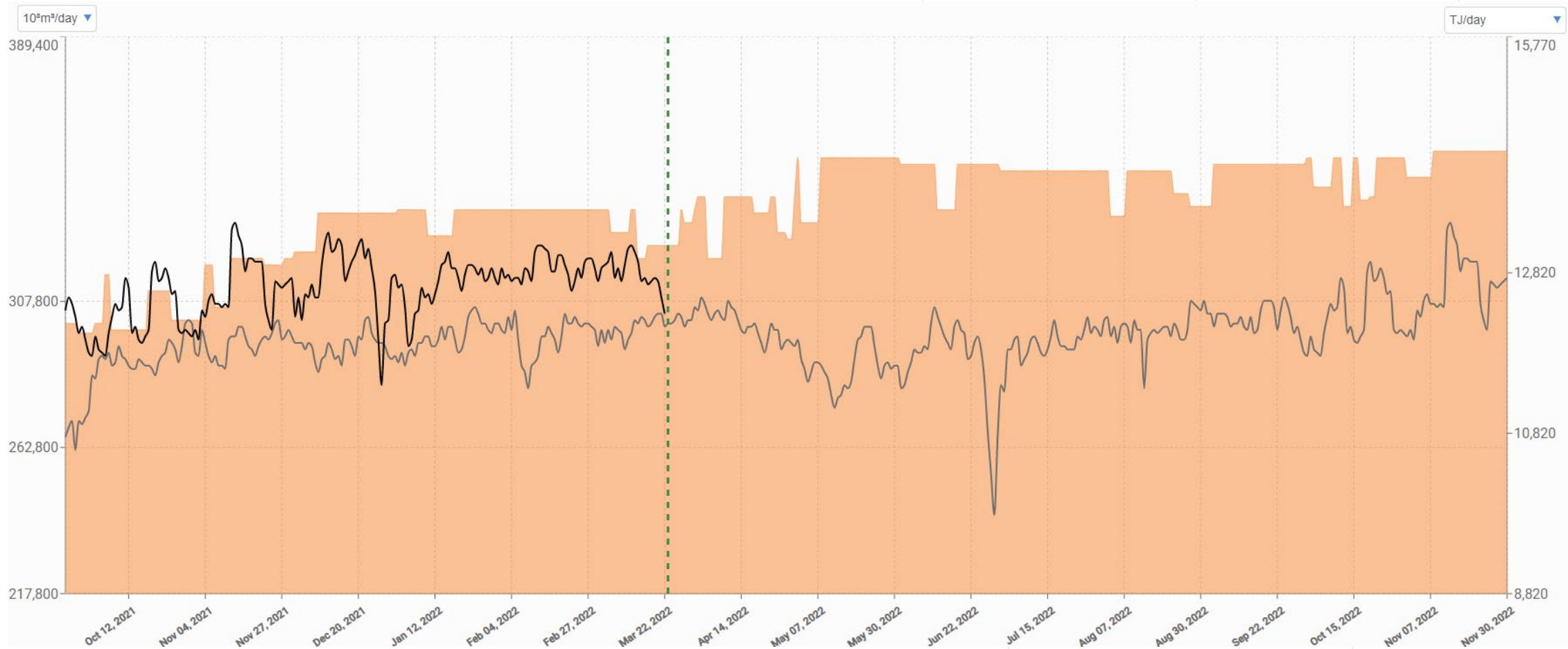
FOR INFORMATIONAL PURPOSES ONLY



For the purposes of the operational capacity charts and outage impacts in the DOP, the remaining portions of the 2021 expansion facilities are assumed for May 1, 2022; however, sections of the project are expected to be completed and placed in-service throughout the months of April and May. NGTL will continue to update operational base and outage capabilities via the DOP as additional capacity becomes available.

Upstream James River

■ Capability
 — Actual Flow
 — Historical Flow
 -- Compared to



This slide may not be accurate beyond the March 24 Customer Meeting on WebEx.
 Please refer to the DOP on TC Customer Express for current outage information



Upstream James River Receipt Area (USJR)

No impact to FT

Potential impact to FT

Partial impact to FT

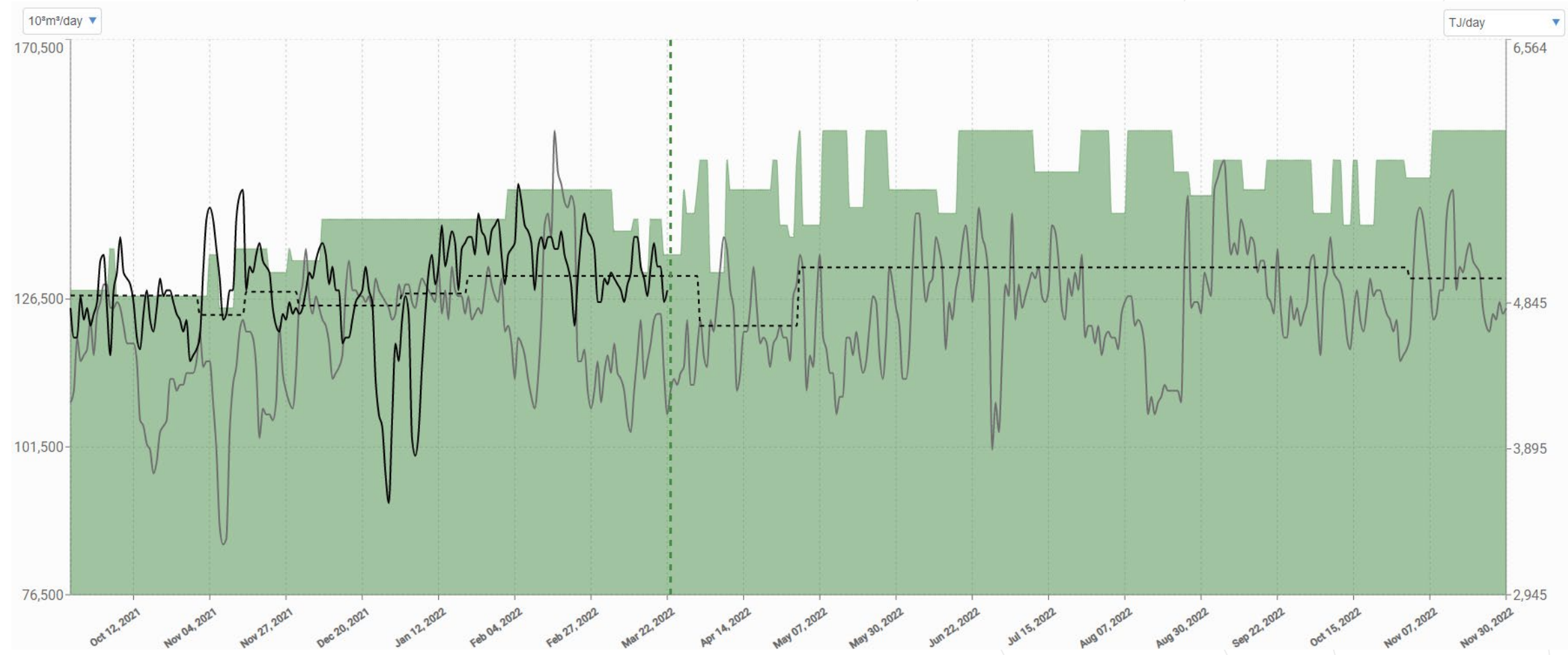
| Outage Description | Start | End | USJR Outage Capability (10 ⁶ m ³ /d) | USJR Impact (10 ⁶ m ³ /d) | Area Outage Capability (10 ⁶ m ³ /d) | Outage Area Typical Flows (10 ⁶ m ³ /d) | Service Allowable Location/Area |
|--|-----------|-----------|--|---|--|---|--|
| Meikle River D5 – Compressor Station Maintenance | 4-Apr-22 | 8-Apr-22 | 321 | 19 | 211 | 165-205 | Potential impact to FT-R USJR U/S of Berland |
| Saddle Hills B3 – Compressor Station Maintenance | 18-Apr-22 | 22-Apr-22 | 335 | 5 | 212 | 160-190 | Potential impact to FT-R USJR U/S of Latornell |
| Alces River – Compressor Station Maintenance | 25-Apr-22 | 29-Apr-22 | 329 | 11 | N/A | 280-320 | Potential impact to FT-R USJR |
| Otter Lake B2 – Compressor Station Maintenance | 28-Apr-22 | 29-Apr-22 | 327 | 13 | N/A | 280-320 | Potential impact to FT-R USJR |

This slide may not be accurate beyond the March 24 Customer Meeting on WebEx. Please refer to the DOP on TC Customer Express for current outage information



East Gate

■ Capability - Actual Flow - Historical Flow - - Contracts - - Compared to



This slide may not be accurate beyond the March 24 Customer Meeting on WebEx.
Please refer to the DOP on TC Customer Express for current outage information





East Gate Delivery Area (EGAT)

No
impact to FT

Potential
impact to FT

Partial
impact to FT

| Outage Description | Start | End | Capability (10 ⁶ m ³ /d) | Impact (10 ⁶ m ³ /d) | System | Service Allowable Location/Area |
|--|-----------|-----------|--|--|--------|---|
| NPS 42 EAS Mainline Loop 3 – Pipeline Maintenance ¹ | 10-Apr-22 | 17-Apr-22 | 145 | 5 | NGTL | No impact to FT-D anticipated Empress/McNeill Borders Segments 15, 16, 17, 18, 19, 20, 23, partial 21, and partial 28 |
| Hussar B8 – Compressor Station Maintenance ² | 18-Apr-22 | 22-Apr-22 | 145 | 5 | NGTL | No impact to FT-D anticipated Empress/McNeill Borders Segments 15, 16, 17, 18, 19, 20, 23, partial 21, and partial 28 |

¹Decrease in capability due to 2021 Expansion facility delays offset by optimization of inline inspection tool selection/speed requirements

²Decrease in capability due to 2021 Expansion facility delays offset by expediting resolution of temporary operational constraints

This slide may not be accurate beyond the March 24 Customer Meeting on WebEx.
Please refer to the DOP on TC Customer Express for current outage information



CONTACTS

CANDICE ENGEL

Manager, Customer Experience

403.920.5623

candice_engel@tcenergy.com



ANDY TSE

Peace River Project Area, Geo Lead

403.920.8001

andy_tse@tcenergy.com



KRISTI ENG

Supervisor, Operations Planning - West

403.920.7749

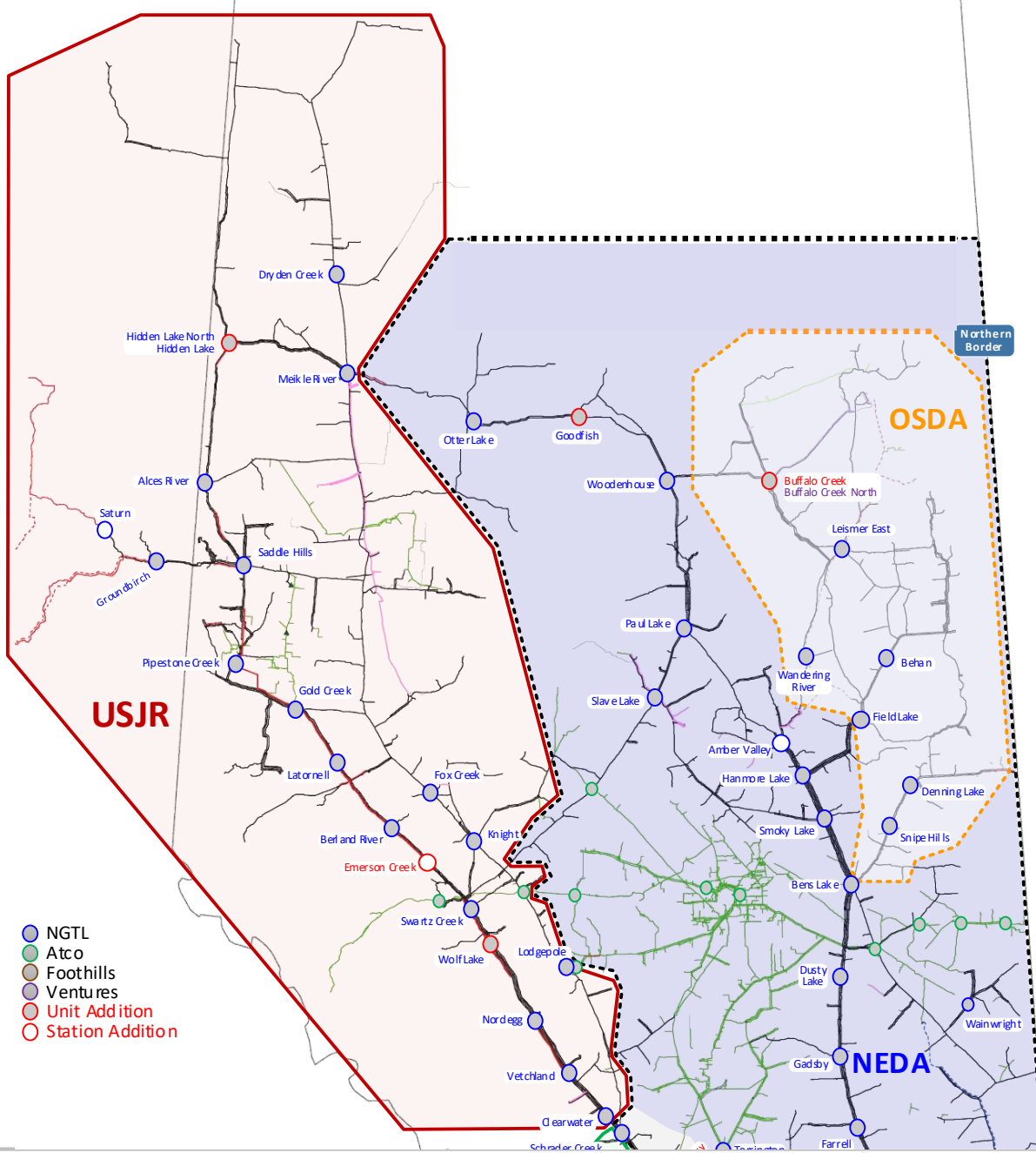
kristi_eng@tcenergy.com



Reference Maps and Flow Paths

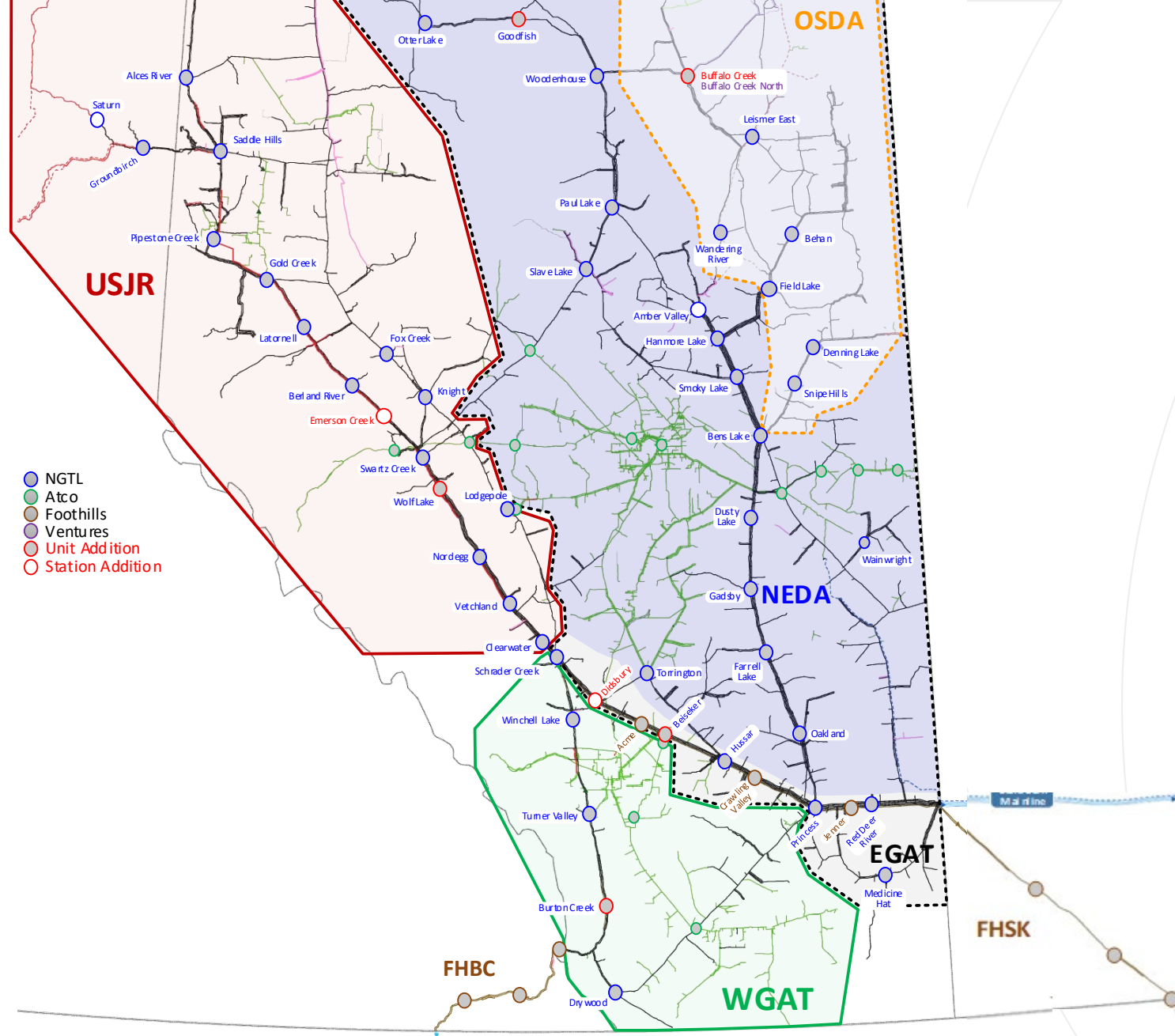
FOR INFORMATION PURPOSES ONLY





- NGTL
- Atco
- Foothills
- Ventures
- Unit Addition
- Station Addition





Commonly Referenced Flow Paths

- Northwest Mainline (NWML)
- Grande Prairie Mainline (GPML)
- Edson Mainline (EDSML)
- Western Alberta System Mainline (WAS)
- Central Alberta System Mainline (CAS)
- Eastern Alberta System Mainline (EAS)
- South Lateral (SLAT)
- North Lateral (NLAT)
- North Central Corridor (NCC)

Click [HERE](#) to access this information on Customer Express

