



450 – 1st Street S.W.
Calgary, Alberta T2P 5H1
Direct Phone: (403) 920-7184
Fax: (403) 920-2347
Email: celine_belanger@transcanada.com

January 18, 2006

Alberta Energy and Utilities Board
640 – 5th Avenue S.W.
Calgary, Alberta
T2P 3G4

Filed Electronically

Attention: Mr. Wade Vienneau,
Manager – Calgary Office, Utilities Branch

Dear Sir:

**Re: NOVA Gas Transmission Limited (NGTL)
Gas Transportation Tariff (Tariff)
Updated Table of Rates, Tolls and Charges
Pressure/Temperature Service (PT Service)**

NGTL encloses for filing an updated Table of 2006 Interim Rates, Tolls and Charges for the Tariff, provided as Attachment 1 to this letter, which incorporates a new PT Schedule of Service, effective April 1, 2006, to decrease operating pressures on average by 1200 kPa at the Caribou Lake meter station located at LSD 15-01-069 W4M. This PT Service rate was forecast in the 2006 Interim Rates Filing. The PT Service Rate for this Schedule of Service as well as the other active PT Service were filed as monthly rates in the 2006 Interim Rates Filing and have been amended in this filing to daily rates.

In order to facilitate the decrease in operating pressure, NGTL will be constructing additional facilities on the Lemming Lake Lateral and on the Caribou Lake Lateral. Pursuant to the terms of the PT Service, the customer requesting the PT Service has provided a full contribution in aid of construction of \$520,800 plus GST for the construction of additional facilities.

The charge for service was determined in accordance with the methodology approved by the Board in Order U2004-136, issued on May 7, 2004. The PT Rate is based on a fixed operating and maintenance charge of \$165.00/day.

NGTL notified shippers located at receipt and delivery points in the Kirby-Canoe area that would be potentially affected by the reduction in operating pressure in the area and members of the Tolls, Tariff, Facilities and Procedures Committee (TTFP) of the requested PT Service on October 13, 2005 and again on November 29, 2005 by facsimile and e-mail. Attachments 2 and 3 to this letter are copies of the notification letters. In addition, NGTL posted the notification on TransCanada's Alberta System Website at:

<http://www.nrgexpressway.com/servlet/nrginfo>.

NGTL has successfully resolved concerns raised as a result of the October 13, 2005 notification to shippers.

NGTL is notifying its shippers and members of the Tolls, Tariff, Facilities and Procedures Committee of the availability of this filing on TransCanada's Alberta System Website at the address below.

http://www.transcanada.com/Alberta/regulatory_info/active_rates_services_filings.htm

Please direct all notices and communications regarding this matter to Greg Szuch by e-mail at greg_szuch@transcanada.com and alberta_system@transcanada.com, or by phone at (403) 920-5321.

Yours truly,

NOVA Gas Transmission Ltd.

A wholly owned subsidiary of TransCanada PipeLines Limited



Céline Bélanger
Vice President, Regulatory Services

Attachments

cc: Tolls, Tariff, Facilities and Procedures Committee
Alberta System Shippers

Attachment 1

Table of Rates, Tolls & Charges

TABLE OF RATES, TOLLS & CHARGES

Service	Rates, Tolls and Charges		
1. Rate Schedule FT-R	Refer to Attachment "1" for applicable FT-R Demand Rate per month & Surcharge for each Receipt Point Average Firm Service Receipt Price (AFSRP) \$155.34/10 ³ m ³		
2. Rate Schedule FT-RN	Refer to Attachment "1" for applicable FT-RN Demand Rate per month & Surcharge for each Receipt Point		
3. Rate Schedule FT-D	FT-D Demand Rate per month \$155.34/10 ³ m ³		
4. Rate Schedule STFT	STFT Bid Price. Minimum bid of 100% of FT-D Demand Rate		
5. Rate Schedule FT-DW	FT-DW Bid Price. Minimum bid of 125% of FT-D Demand Rate		
6. Rate Schedule FT-A	FT-A Commodity Rate \$0.48/10 ³ m ³		
7. Rate Schedule FT-P	Refer to Attachment "2" for applicable FT-P Demand Rate per month		
8. Rate Schedule LRS	<u>Contract Term</u>		<u>Effective LRS Rate (\$/10³m³/day)</u>
	1-5 years		9.69
	6-10 years		8.10
	15 years		7.26
	20 years		6.45
9. Rate Schedule LRS-2	LRS-2 Rate per month \$50,000		
10. Rate Schedule LRS-3	LRS-3 Demand Rate per month \$196.32/10 ³ m ³		
11. Rate Schedule IT-R	Refer to Attachment "1" for applicable IT-R Rate & Surcharge for each Receipt Point		
12. Rate Schedule IT-D	IT-D Rate \$5.61/10 ³ m ³		
13. Rate Schedule FCS	The FCS Charge is determined in accordance with Attachment "1" to the applicable Schedule of Service		
14. Rate Schedule PT	<u>Schedule No</u>	<u>PT Rate</u>	<u>PT Gas Rate</u>
	9004-01002-0	\$ 35.00/day	3.0 10 ³ m ³ /d
	9005-01000-0	\$165.00/day	0.0 10 ³ m ³ /d
15. Rate Schedule OS	<u>Schedule No.</u>	<u>Charge</u>	
	2003-004522-2	\$ 83,333.00 / month	
	2003-034359-2	\$ 899.00 / month	
	2004-168619-1	\$ 437.00 / month	
	2005-186985-1	\$ 870.00 / month	
	2005-186989-1	\$ 1,562.00 / month	
	2005-186993-1	\$ 307.00 / month	
	2005-186998-1	\$ 622.00 / month	
	2005-187604-1	\$ 83.00 / month	
	2005-187605-1	\$ 233.00 / month	
	2005-187756-1	\$ 159.00 / month	
	2005-196739-1	\$ 48.00 / month	
	2005-202095-1	\$ 3,638.00 / month	
16. Rate Schedule CO ₂	<u>Tier</u>	<u>CO₂ Rate (\$/10³m³)</u>	
	1	674.38	
	2	532.41	
	3	390.43	

Attachment 2

Shipper Notification – October 13, 2005

NOVA Gas Transmission Ltd.
Non-Critical Notice

Notice Type: Other
Effective Date: April 1, 2006 (posted date October 13, 2005)
Subject: Pressure, Temperature Service – Northeast Alberta

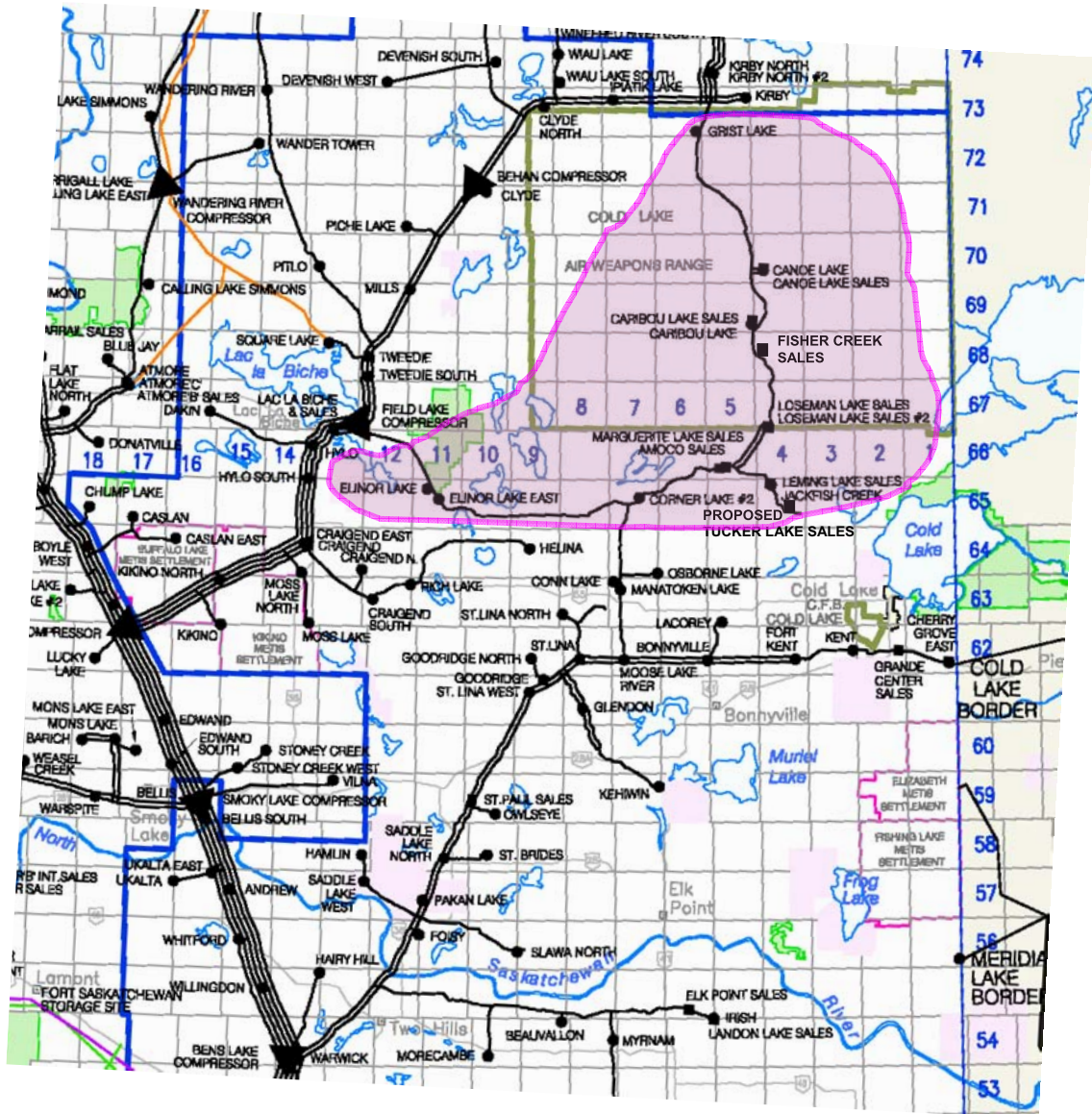
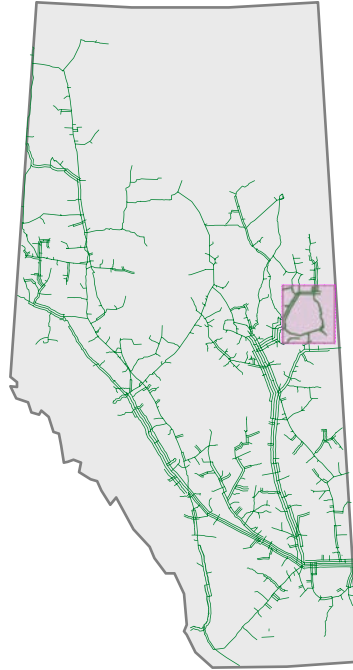
This is to inform you that a customer has approached TransCanada with a request for TransCanada to modify our system operation for their benefit. TransCanada continually optimizes the pipeline system and based on current conditions would generally not operate in the mode requested by the customer to move requested volumes. Therefore, the customer requesting the operational modifications will be charged the incremental costs associated with TransCanada's change in operation. If TransCanada does proceed to implement the modified mode of operation, typical operating conditions would change at the locations as per the table in Attachment 2. The proposed area affected can be seen on the map in attachment 1. Please note that a similar proposal was previously posted on November 18, 2004, but did not proceed to implementation.

Please review this information and if you feel your company will be negatively affected by this change please notify your TransCanada Sales Representative in writing with the nature and magnitude of the impact. TransCanada will review all information submitted by Customers in consideration of this service requirement and assess TransCanada's ability to proceed with the service. If there are no concerns the service may proceed without further notice, however, if there are unresolved concerns the service will not proceed until the concerns have been resolved. Please note the information you provide will upon request be treated as privileged and confidential.

TransCanada would like to proceed with preparations required to implement this request as soon as possible, therefore, please respond within 10 business days. If you have any questions please call your Customer Sales Representative, or alternatively Ron Clarke at 920-5802.

Note: This requested service cannot be implemented until the Alberta Energy and Utilities Board ("EUB") renders a decision on the proposed amendments to Rate Schedule PT. This notice is occurring presuming the EUB will accept the amendments as filed. For more information regarding the PT Service Application, please click the following link and select *NGTL TTFP Resolution T2005-03 – Pressure/Temperature (PT) Service Review*:
http://www.transcanada.com/Alberta/regulatory_info/2005.htm

ATTACHMENT 1 – Maps Of Affected Areas



ATTACHMENT 2 – Expected Operating Pressure (Affected Area)

Station Name	Mnemonic	Number	With PT Service			Without PT Service		
			Min	Typ	Max	Min	Typ	Max
Canoe Lake Sales	CANSL	3634	5480	5580	7995	7280	7995	8135
Fisher Creek Sales	FISSH	3138	4690	4790	7625	6900	7625	7805
Leming Lake Sales	LMGSL	3605	4200	4300	7515	6730	7515	7675
Loseman Lake Sales	LSMSL	3606	4690	4790	7625	6900	7625	7805
Loseman Lake Sales 2	LS2SL	3621	4690	4790	7635	6910	7635	7800
Marguerite Sales	MGTSL	3604	4560	4660	7640	6910	7640	7810
Tucker Lake Sales (proposed)	N/A	N/A	3650	3750	6965	6180	6965	7125

Station Name	Mnemonic	Number	With PT Service			Without PT Service		
			Min	Typ	Max	Min	Typ	Max
Canoe Lake	CANOL	1805	5480	5580	8025	7310	8025	8180
Canoe Lake Sales	CARIB	1692	5410	5510	8005	7300	8005	8170
Corner Lake 2	CRNR2	1763	4680	4780	7725	7055	7725	7900
Elinor Lake	ELINR	1715	4820	4920	7840	7170	7840	7995
Elinor Lake East	ELINE	1742	4795	4895	7815	7145	7815	7970
Grist Lake	GRIST	1647	5535	5635	8015	7305	8015	8155
Jackfish Creek	JFISH	1694	4200	4300	7510	6720	7510	7665

Attachment 3

Update to Shipper Notification – November 29, 2005

NOVA Gas Transmission Ltd.
Non-Critical Notice

Notice Type: Other
Effective Date: April 1, 2006 (update to Notice posted on October 13, 2005)
Subject: Pressure, Temperature Service – Northeast Alberta (Segment 11)

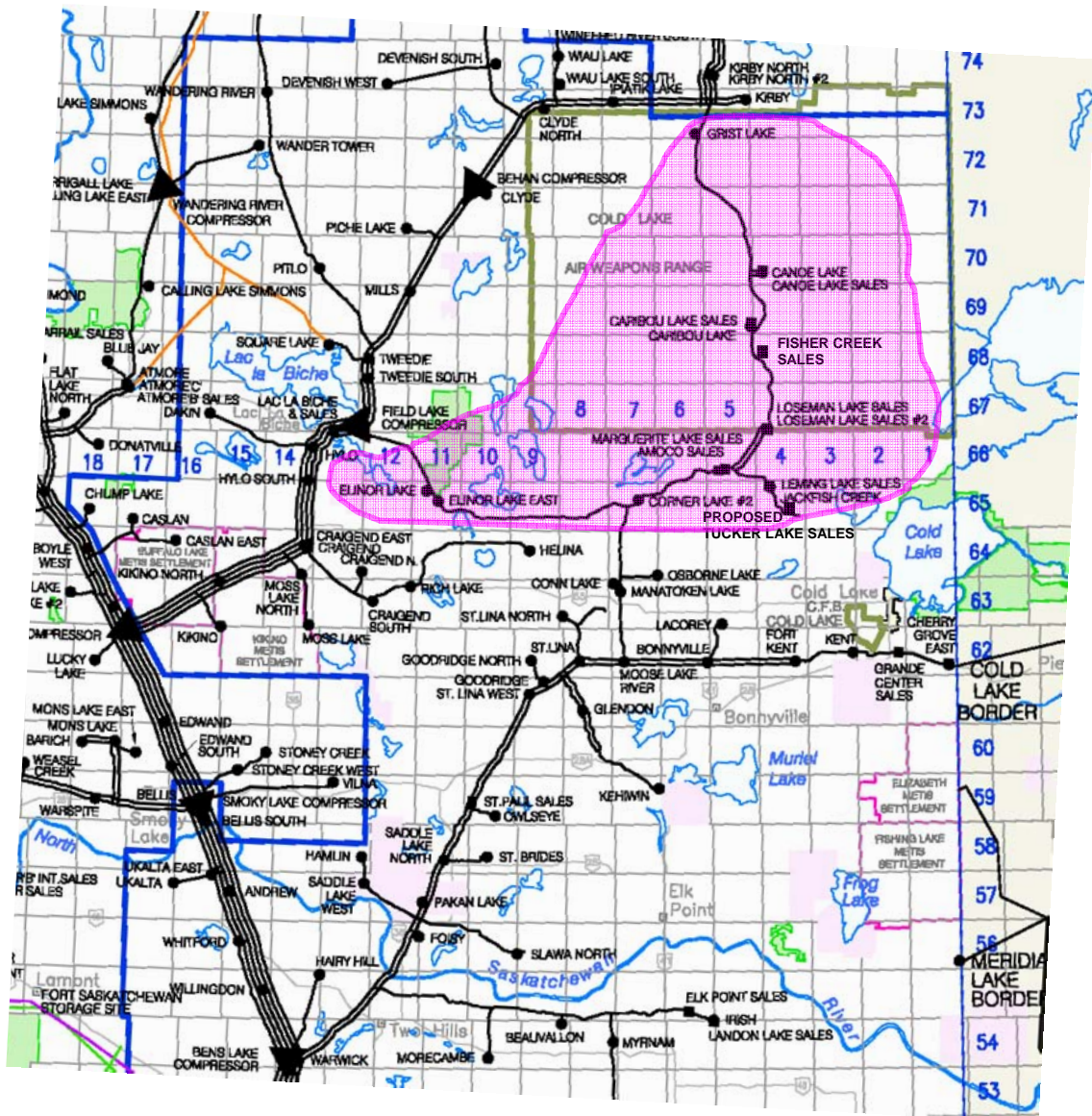
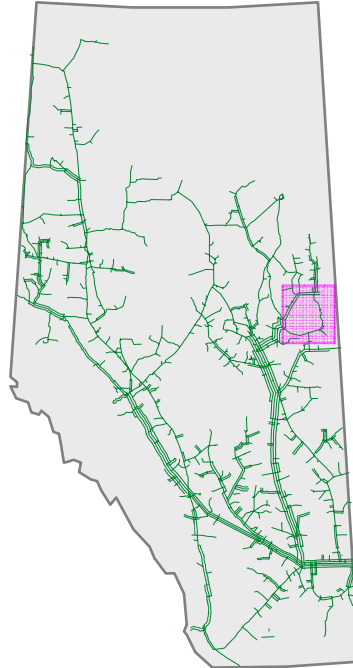
This is to inform you that TransCanada will be proceeding with preparations required to implement the previously posted Pressure, Temperature Service – Northeast Alberta request. The estimated effective date for this requested service is April 1, 2006.

For additional information on this posting including a map showing the area affected by this Pressure, Temperature Service request (Attachment 1) and a table showing the revised expected operating pressure range of meter stations in the affected area (Attachment 2) please reference the following link;

http://www.transcanada.com/Alberta/regulatory_info/pressure_temperature_service.html

If you have any questions please call your Customer Sales Representative, or alternatively Ron Clarke at 920-5802.

ATTACHMENT 1 – Maps Of Affected Areas



ATTACHMENT 2 – Expected Operating Pressure (Affected Area)

Station Name	Mnemonic	Number	With PT Service			Without PT Service		
			Min	Typ	Max	Min	Typ	Max
Canoe Lake Sales	CANSL	3634	5780	5880	7995	7280	7995	8135
Fisher Creek Sales	FISSH	3138	5990	6090	7625	6900	7625	7805
Leming Lake Sales	LMGSL	3605	5500	5600	7515	6730	7515	7675
Loseman Lake Sales	LSMSL	3606	5990	6090	7625	6900	7625	7805
Loseman Lake Sales 2	LS2SL	3621	5990	6090	7635	6910	7635	7800
Marguerite Sales	MGTSL	3604	5860	5960	7640	6910	7640	7810
Tucker Lake Sales (proposed)	N/A	N/A	4950	5050	6965	6180	6965	7125

Station Name	Mnemonic	Number	With PT Service			Without PT Service		
			Min	Typ	Max	Min	Typ	Max
Canoe Lake	CANOL	1805	6780	6880	8025	7310	8025	8180
Caribou Lake	CARIB	1692	6710	6810	8005	7300	8005	8170
Corner Lake 2	CRNR2	1763	5980	6080	7725	7055	7725	7900
Elinor Lake	ELINR	1715	6120	6220	7840	7170	7840	7995
Elinor Lake East	ELINE	1742	6095	6195	7815	7145	7815	7970
Grist Lake	GRIST	1647	6835	6835	8015	7305	8015	8155
Jackfish Creek	JFISH	1694	5500	5600	7510	6720	7510	7665