

# SYSTEM UTILIZATION AND RELIABILITY MONTHLY REPORT

for the month ending  
August, 2010

*Published date:*  
November 23, 2010

---

## Highlights This Month:

- Starting with the 2009/10 Gas Year, the average actual flow for the dominant flow condition in each of the Alberta design areas will be compared against the corresponding design capability to obtain a measure of pipeline utilization. Consequently, design capability utilization will be measured as Average Actual Flow / Seasonal Design Capability.
- FT Receipt Availability over a 3 month average from June 1, 2010 – August 31, 2010 was deemed to be 100% available in all pipe segments.
- Border Availability at Empress/McNeill, Gordondale and Alberta/BC, over a 3 month average from June 1, 2010 – August 31, 2010, were all deemed 100% available.

NOVA Gas Transmission Ltd.

# TABLE OF CONTENTS

---

<b><u>MONTHLY FEATURES</u></b>	<b>PAGE</b>
Firm Transportation Service Contract Utilization .....	3
Design Capability Utilization	
North of Bens Lake – Flow Within .....	4
North & South of Bens Lake – Flow Within.....	5
Upper Peace River .....	6
Upper & Central Peace River .....	7
Peace River Design .....	8
Marten Hills .....	9
Upstream James River .....	10
South & Alderson .....	11
Rimbey Nevis – Flow Within .....	12
Eastern Alberta Mainline (James River to Princess) .....	13
Medicine Hat - Flow Within .....	14
Eastern Alberta Mainline (Princess to Empress/McNeill) .....	15
Western Alberta Mainline (AB/BC & AB/Montana Borders) .....	16
Historical Transportation Service Availability (3 Month Average) .....	17
Future Firm Transportation Service Availability.....	18
How to Use This Report .....	19

## **REFERENCES**

NGTL Design Areas Map .....	21
NGTL Pipeline Segments Map .....	22
Definition of Terms .....	23

If you have any questions on the content of this report, contact Bob Haney at (403) 920-5317 or via fax at (403) 920-2380.

# FIRM TRANSPORTATION SERVICE<sup>1</sup> CONTRACT UTILIZATION<sup>2</sup>

By NGTL Pipeline Segments

Segment	Receipt Contract	Mar-10	Apr-10	May-10	Jun-10	Jul-10	Aug-10	Aug CD (mmcf/d)
UPRM <sup>4</sup>	FT	85%	92%	94%	93%	89%	92%	138
	FT + IT	90%	99%	100%	98%	95%	95%	
LPRM <sup>4</sup>	FT	86%	86%	93%	93%	89%	87%	15
	FT + IT	109%	124%	127%	118%	119%	110%	
PRLL <sup>4</sup>	FT	93%	94%	94%	94%	98%	97%	158
	FT + IT	110%	118%	118%	117%	121%	116%	
NWML <sup>4</sup>	FT	97%	97%	96%	96%	96%	96%	399
	FT + IT	102%	105%	104%	103%	103%	103%	
GRDL <sup>4</sup>	FT	76%	76%	76%	81%	87%	86%	341
	FT + IT	94%	107%	108%	116%	114%	113%	
WRSY <sup>4</sup>	FT	96%	95%	95%	95%	95%	92%	33
	FT + IT	130%	135%	150%	148%	138%	129%	
WAEX	FT	94%	93%	93%	95%	94%	91%	260
	FT + IT	151%	186%	169%	184%	147%	144%	
JUDY	FT	98%	99%	99%	99%	99%	98%	91
	FT + IT	119%	132%	130%	129%	128%	122%	
GPML	FT	96%	97%	97%	96%	95%	95%	2,226
	FT + IT	111%	118%	115%	109%	108%	110%	
CENT	FT	98%	96%	97%	91%	98%	96%	920
	FT + IT	121%	129%	122%	111%	126%	122%	
LPOL	FT	96%	98%	99%	98%	98%	98%	429
	FT + IT	125%	137%	126%	126%	124%	124%	
WGAT	FT	94%	92%	91%	81%	89%	89%	344
	FT + IT	123%	115%	118%	98%	122%	123%	
ALEG	FT	98%	97%	96%	96%	96%	97%	938
	FT + IT	124%	125%	124%	122%	123%	122%	
SLAT	FT	97%	96%	97%	96%	96%	96%	244
	FT + IT	126%	127%	127%	128%	146%	141%	
MLAT	FT	97%	96%	95%	97%	94%	96%	239
	FT + IT	111%	114%	111%	110%	112%	113%	
BLEG	FT	98%	94%	97%	97%	96%	97%	583
	FT + IT	109%	106%	111%	113%	119%	115%	
EGAT	FT	96%	94%	94%	94%	95%	96%	46
	FT + IT	122%	113%	114%	116%	121%	118%	
MRTN	FT	85%	89%	87%	86%	87%	86%	136
	FT + IT	110%	110%	105%	103%	103%	101%	
LIEG	FT	67%	68%	71%	71%	70%	82%	73
	FT + IT	100%	104%	104%	102%	102%	113%	
KIRB	FT	78%	79%	83%	81%	81%	90%	90
	FT + IT	108%	107%	107%	108%	107%	106%	
SMHI	FT	82%	87%	90%	90%	90%	90%	65
	FT + IT	133%	144%	155%	151%	143%	142%	
REDL	FT	83%	90%	90%	90%	89%	86%	70
	FT + IT	147%	152%	155%	148%	147%	130%	
COLD	FT	76%	85%	86%	90%	84%	81%	47
	FT + IT	124%	115%	119%	114%	111%	109%	
NLAT	FT	96%	97%	96%	94%	95%	96%	216
	FT + IT	123%	131%	128%	122%	124%	125%	
WAIN	FT	86%	93%	94%	95%	96%	93%	16
	FT + IT	116%	127%	135%	125%	129%	122%	
ELAT	FT	95%	96%	95%	96%	95%	95%	131
	FT + IT	136%	143%	143%	145%	144%	146%	
TOTAL SYSTEM	FT	94%	95%	95%	94%	95%	94%	8,246
	FT + IT	116%	122%	119%	116%	118%	118%	

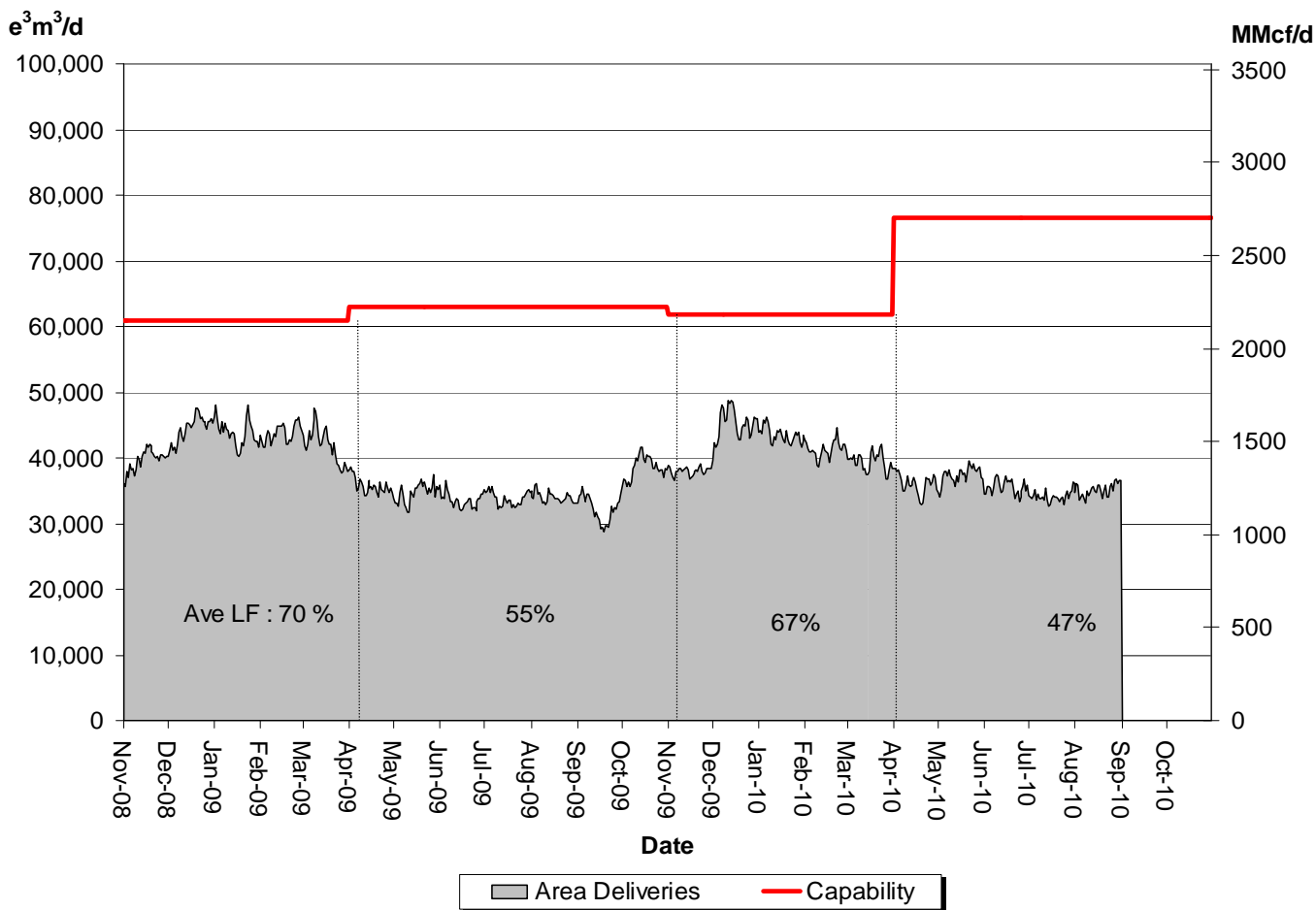
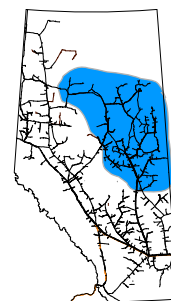
  

Segment	Delivery Contract	Mar-10	Apr-10	May-10	Jun-10	Jul-10	Aug-10	Aug CD (GJ/d)
Empress	FT	97%	87%	87%	83%	88%	86%	3,183,353
	FT + IT	102%	97%	97%	99%	98%	94%	
McNeill	FT	99%	99%	100%	99%	100%	99%	1,536,303
	FT + IT	130%	138%	140%	134%	134%	144%	
ABC	FT	93%	92%	77%	74%	90%	90%	2,388,936
	FT + IT	95%	94%	77%	76%	93%	93%	

\*NOTE:

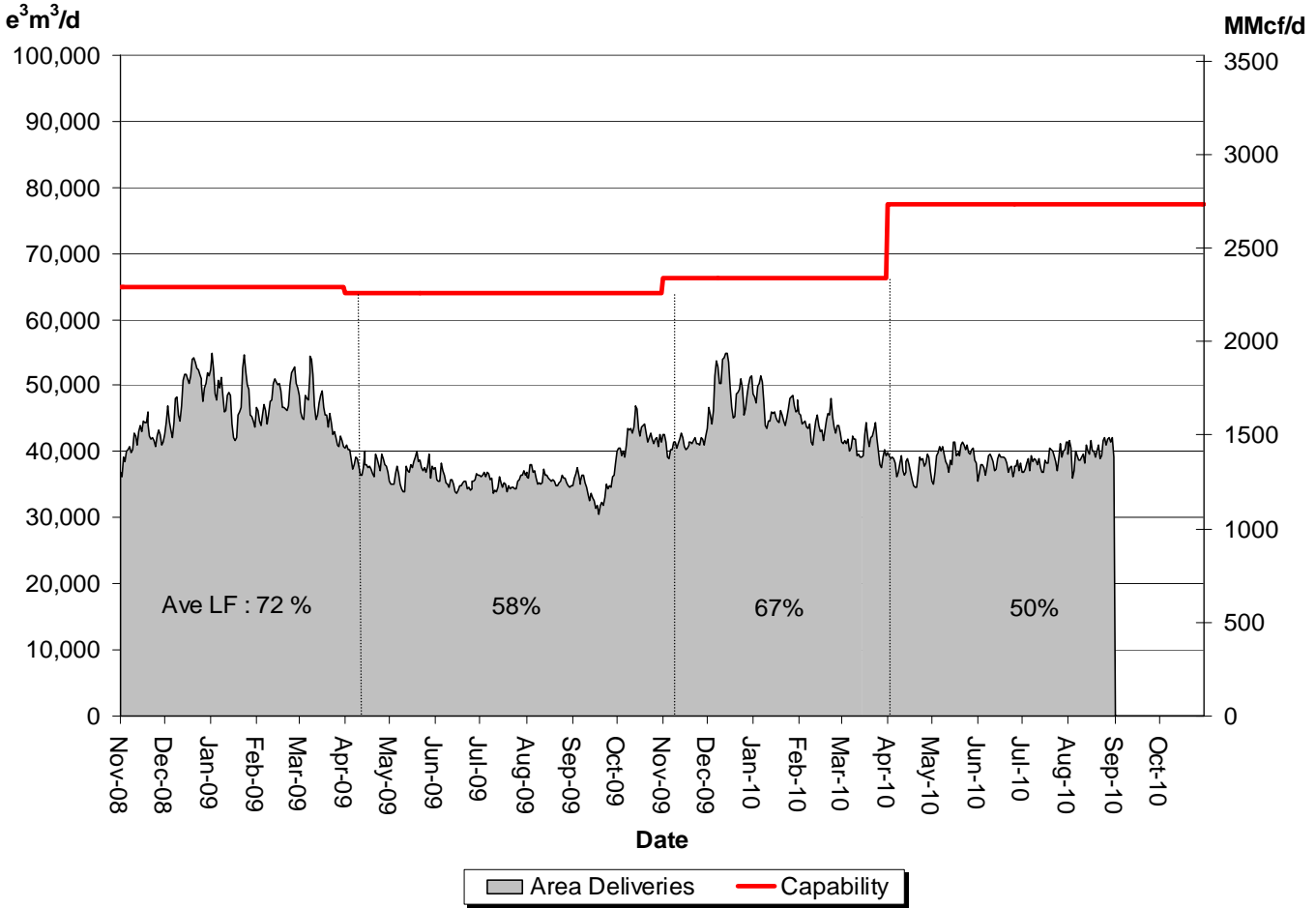
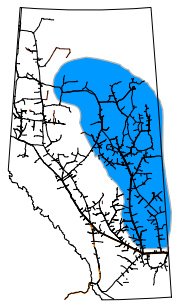
1. FT includes all receipt and export delivery Firm Transportation Services: FTR, LRS, FTD.
2. IT includes all receipt and border delivery Interruptible Services: ITR, FRO, ITD, FDO.
3. Utilization data is based on billed monthly volumes. Percent utilization calculated as FT and FT + IT billed Volumes divided by applicable receipt or delivery Contract level.

# DESIGN CAPABILITY UTILIZATION NORTH OF BENS LAKE – FLOW WITHIN



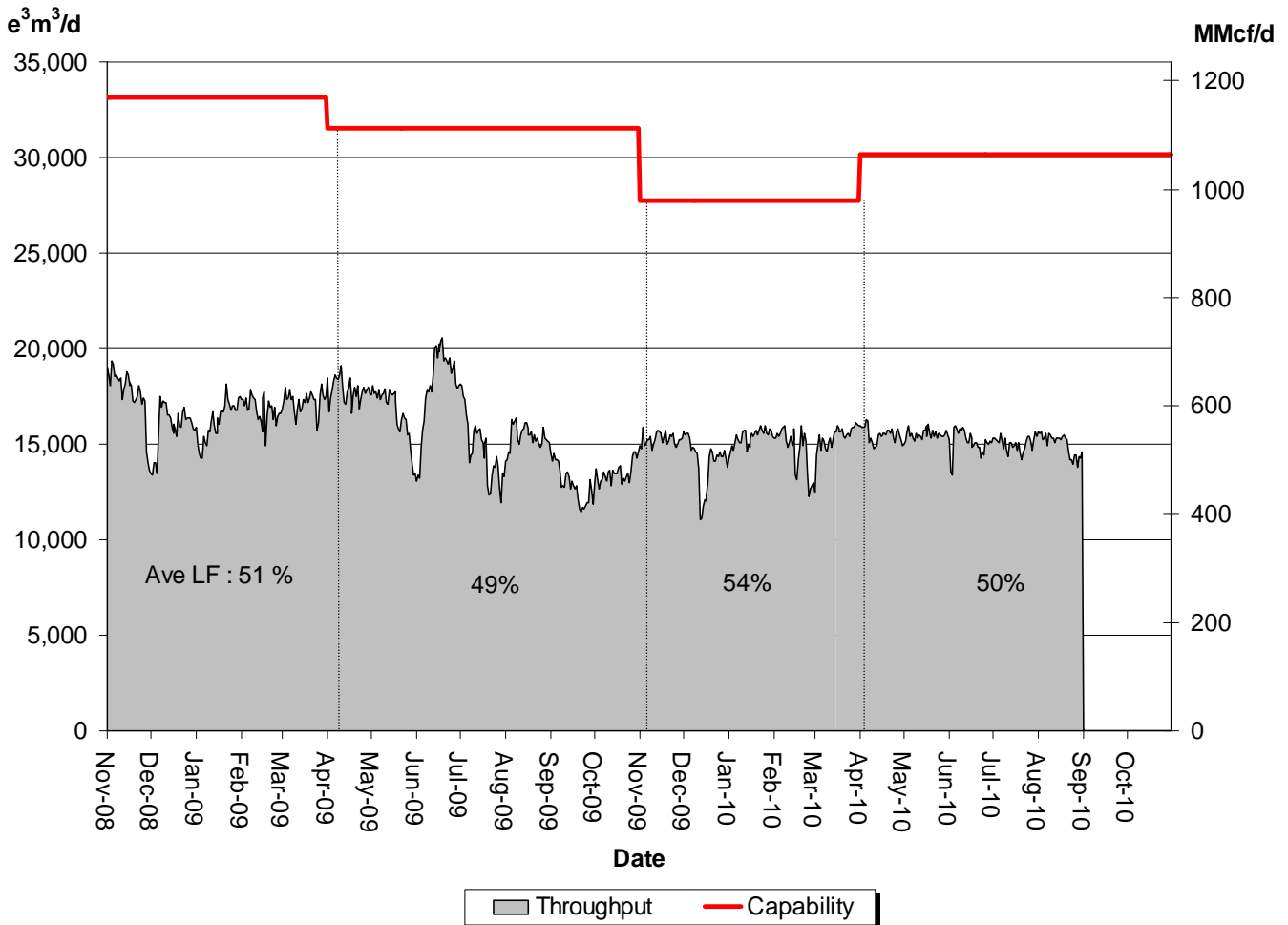
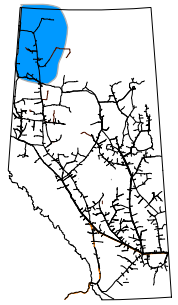
<b>% Design Capability Utilization</b>						
Monthly Average Area Deliveries as a Percentage of Design Capability						
Average Flow/ Design Capability	Mar	Apr	May	Jun	Jul	Aug
	64	47	49	46	45	46

# DESIGN CAPABILITY UTILIZATION NORTH & SOUTH OF BENS LAKE – FLOW WITHIN



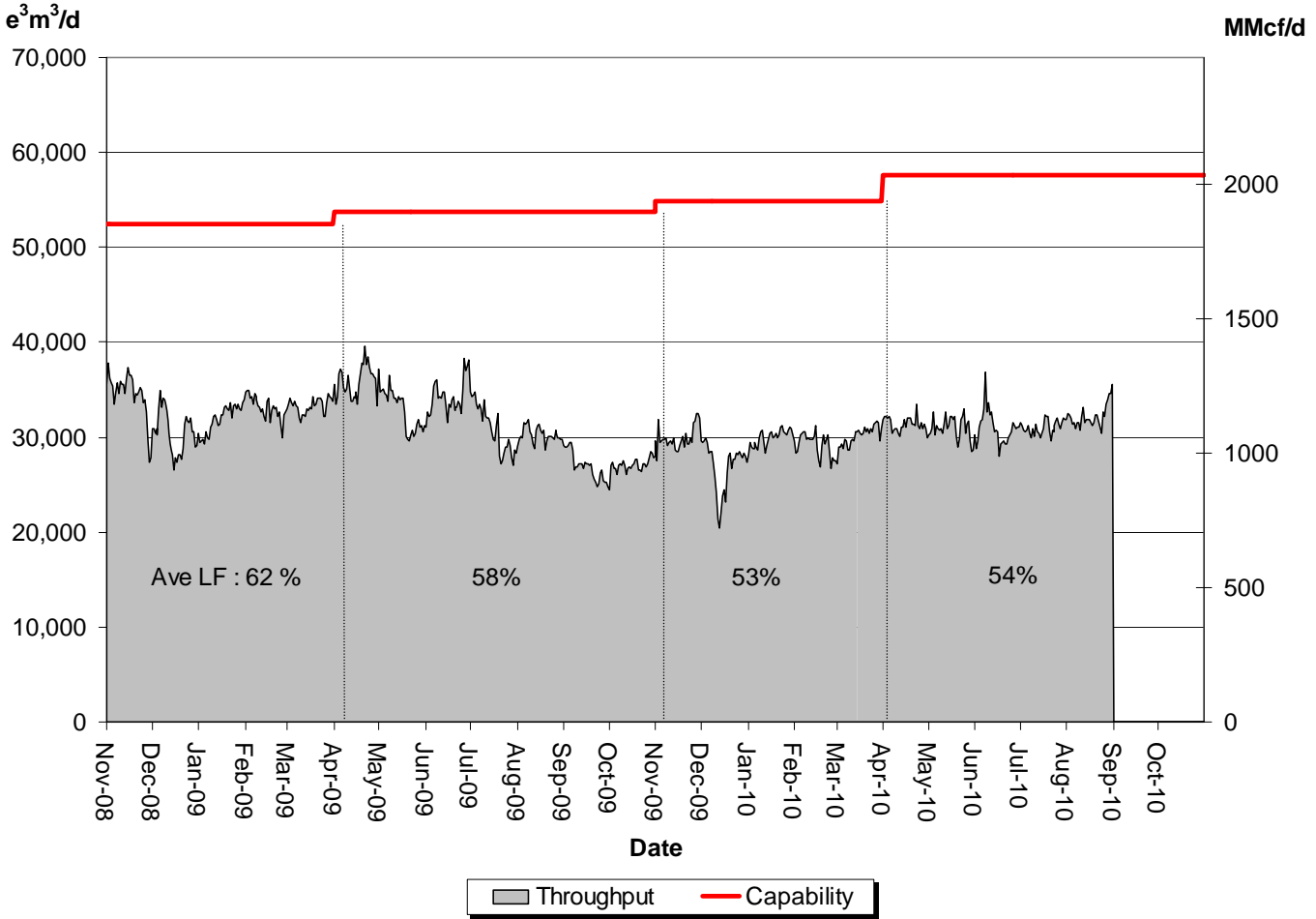
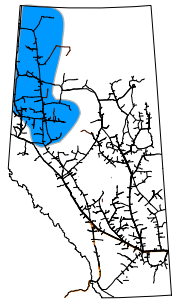
<b>% Design Capability Utilization</b>						
Monthly Average Actual Area Deliveries as a Percentage of Design Capability						
Average Flow/ Design Capability	Mar	Apr	May	Jun	Jul	Aug
	62	49	50	48	46	46

# DESIGN CAPABILITY UTILIZATION UPPER PEACE RIVER



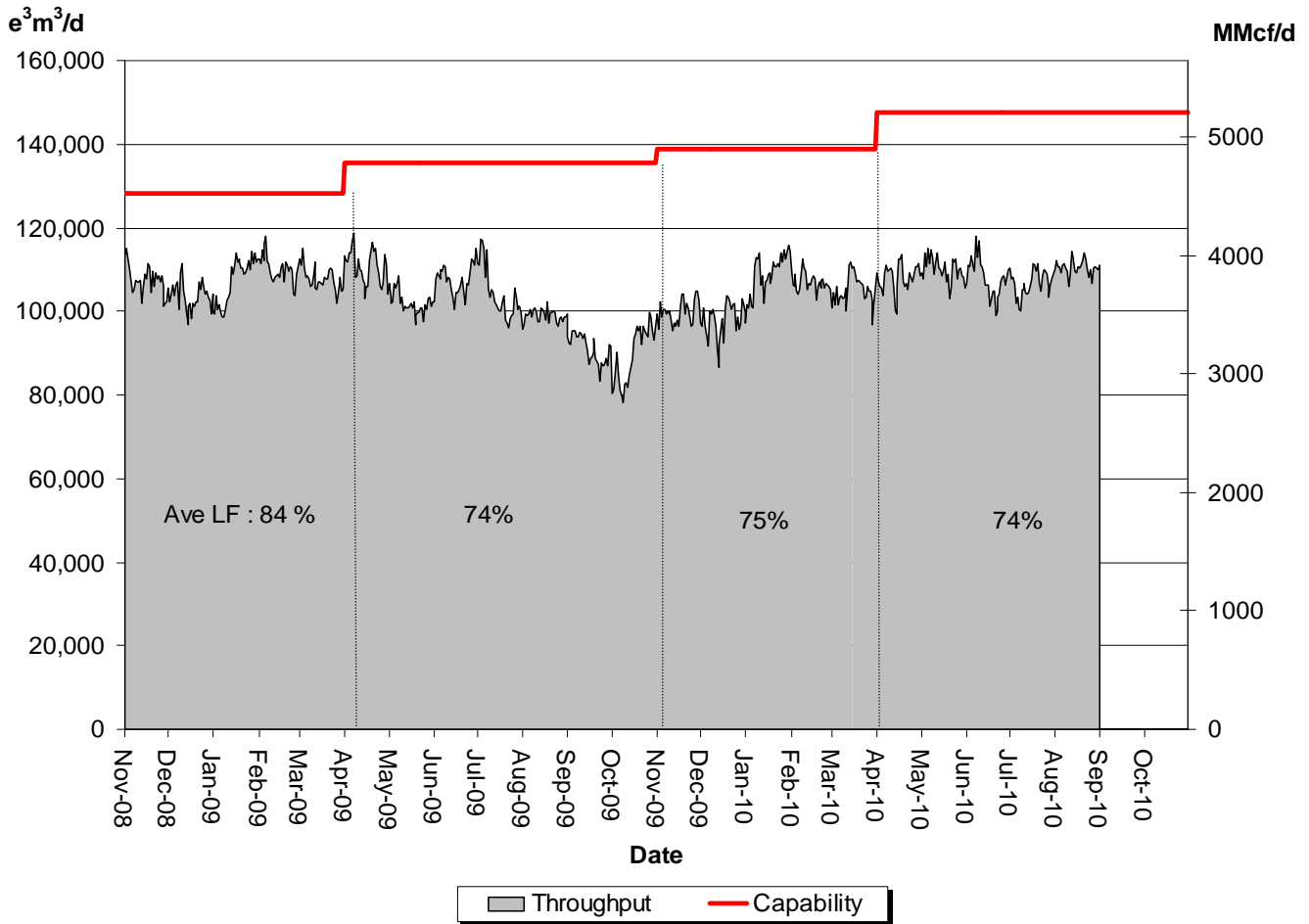
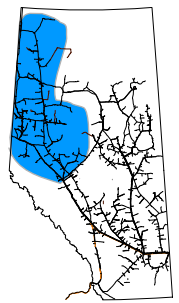
% Design Capability Utilization Monthly Average Actual Flow as a Percentage of Design Capability						
Average Flow/ Design Capability	Mar	Apr	May	Jun	Jul	Aug
	55	51	51	50	50	50

# DESIGN CAPABILITY UTILIZATION UPPER and CENTRAL PEACE RIVER



<b>% Design Capability Utilization</b> Monthly Average Actual Flow as a Percentage of Capability						
Average Flow/ Design Capability	Mar	Apr	May	Jun	Jul	Aug
	55	55	54	54	54	56

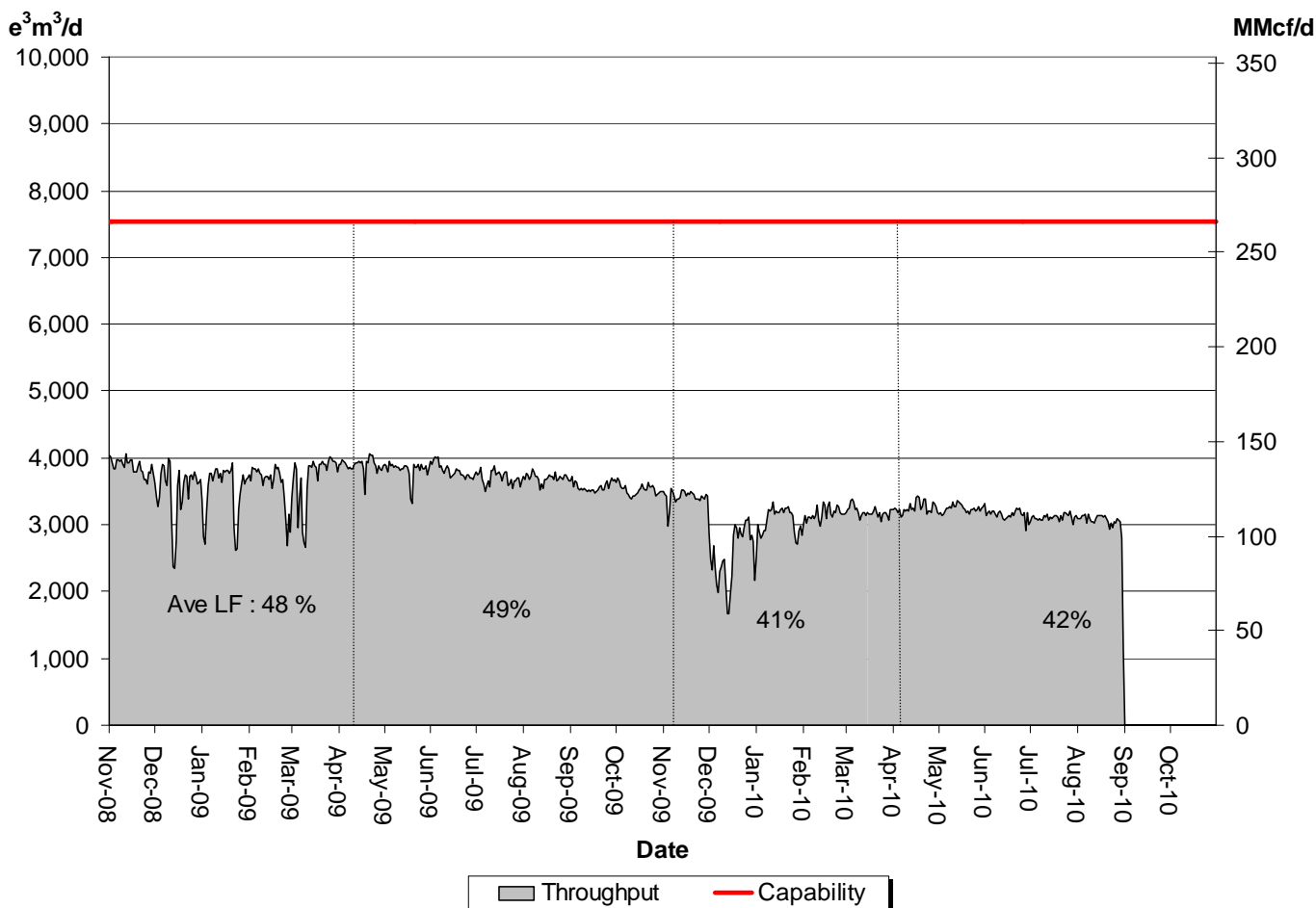
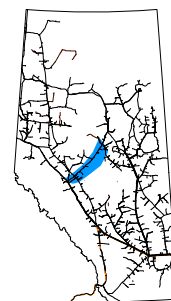
# DESIGN CAPABILITY UTILIZATION PEACE RIVER DESIGN (Upper, Central and Lower Peace River)



<b>% Design Capability Utilization</b>						
Monthly Average Actual Flow as a Percentage of Design Capacity						
Average Flow/ Design Capacity	Mar	Apr	May	Jun	Jul	Aug
	76	73	75	73	72	75



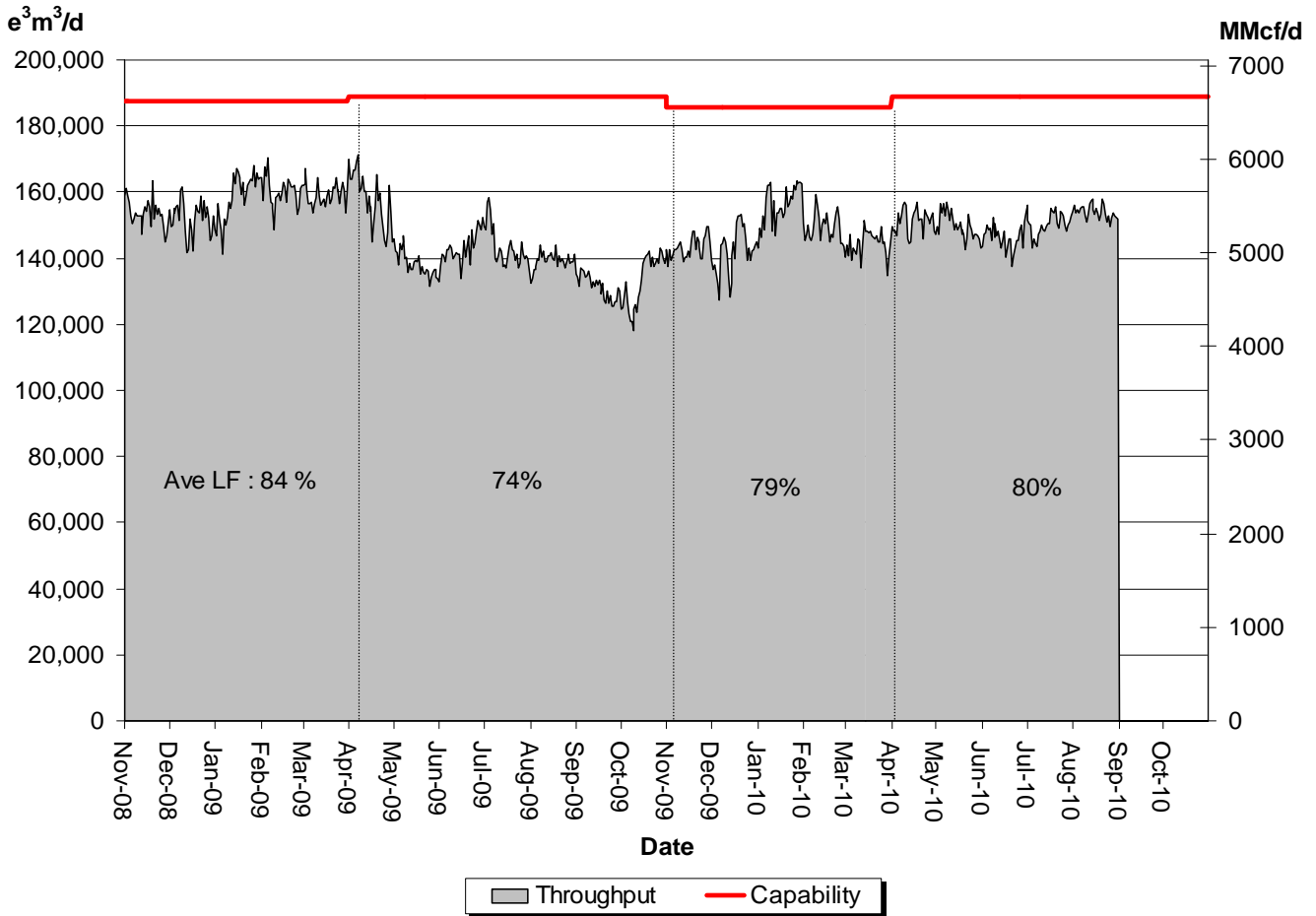
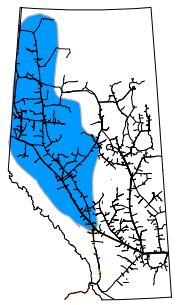
# DESIGN CAPABILITY UTILIZATION MARTEN HILLS



% Design Capability Utilization						
Monthly Average Actual Flow as a Percentage of Design Capability						
Average Flow/ Design Capability	Mar	Apr	May	Jun	Jul	Aug
	42	43	43	42	41	40

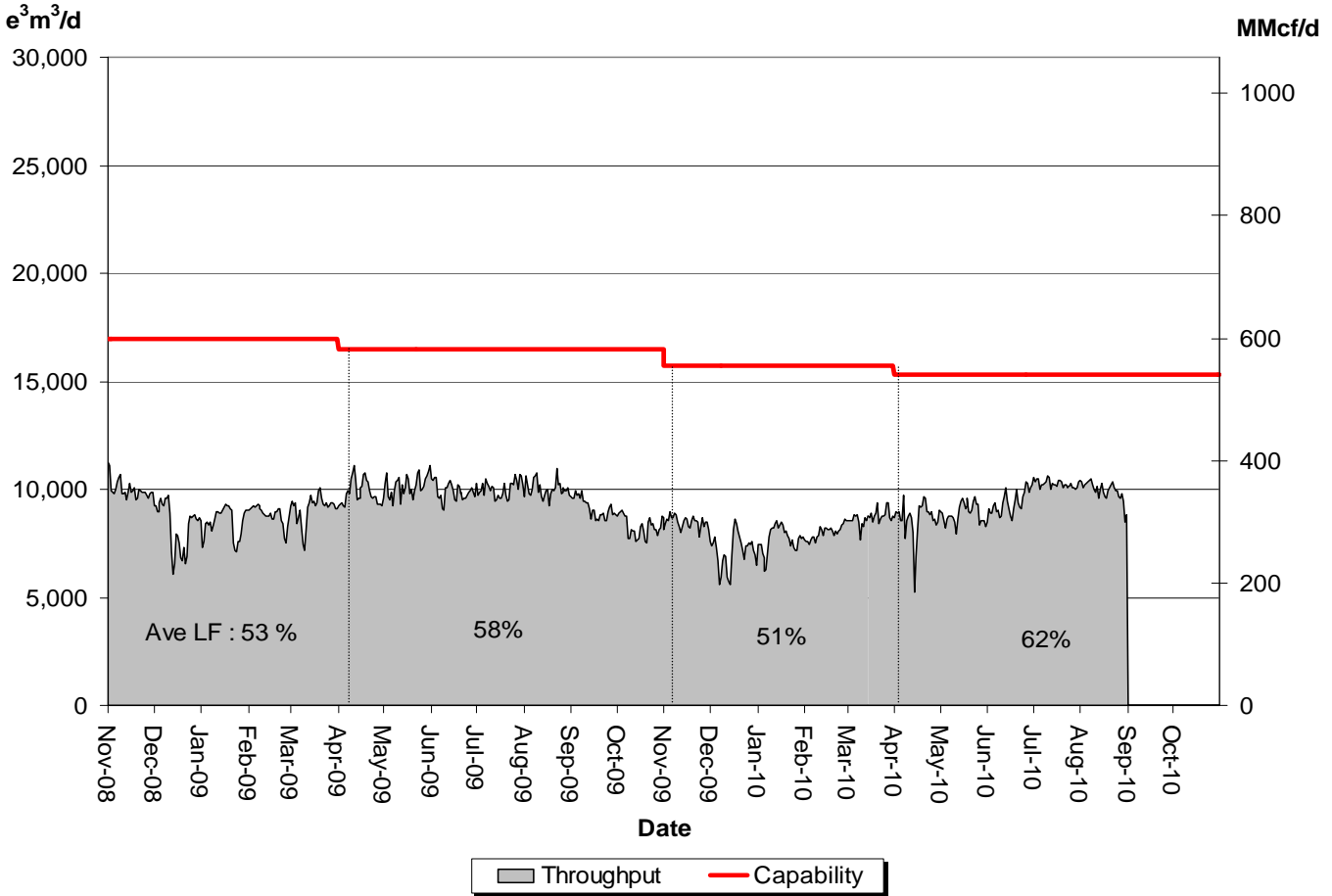
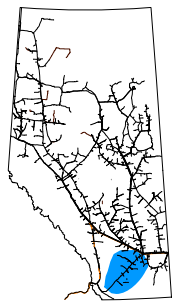
# DESIGN CAPABILITY UTILIZATION UPSTREAM JAMES RIVER

(Edson Mainline, Peace River Design and Marten Hills)



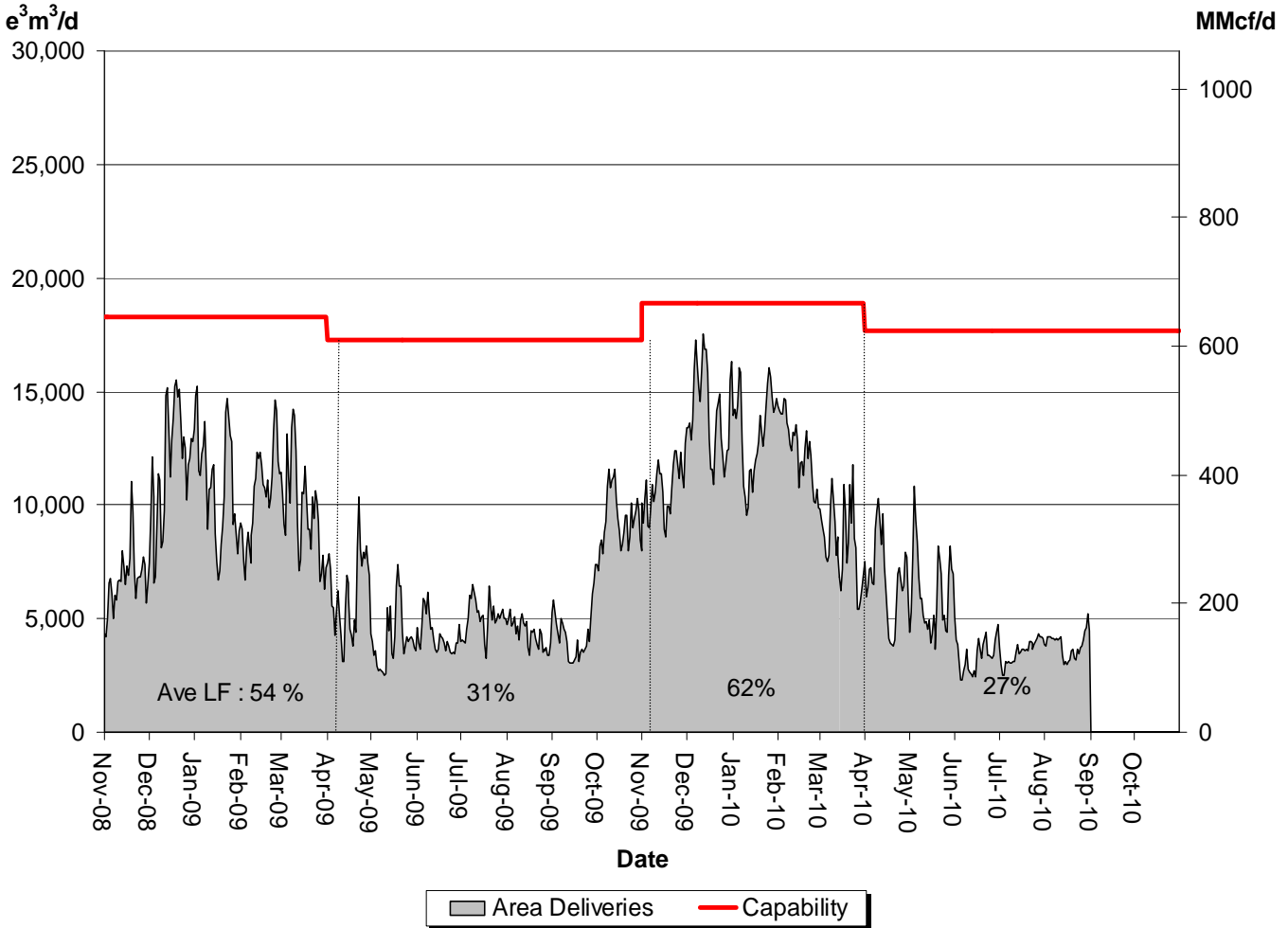
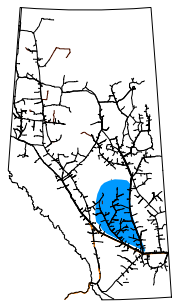
<b>% Design Capability Utilization</b>						
Monthly Average Actual Flow as a Percentage of Design Capability						
Average Flow/ Design Capability	Mar	Apr	May	Jun	Jul	Aug
	78	80	79	78	80	82

# DESIGN CAPABILITY UTILIZATION SOUTH and ALDERSON



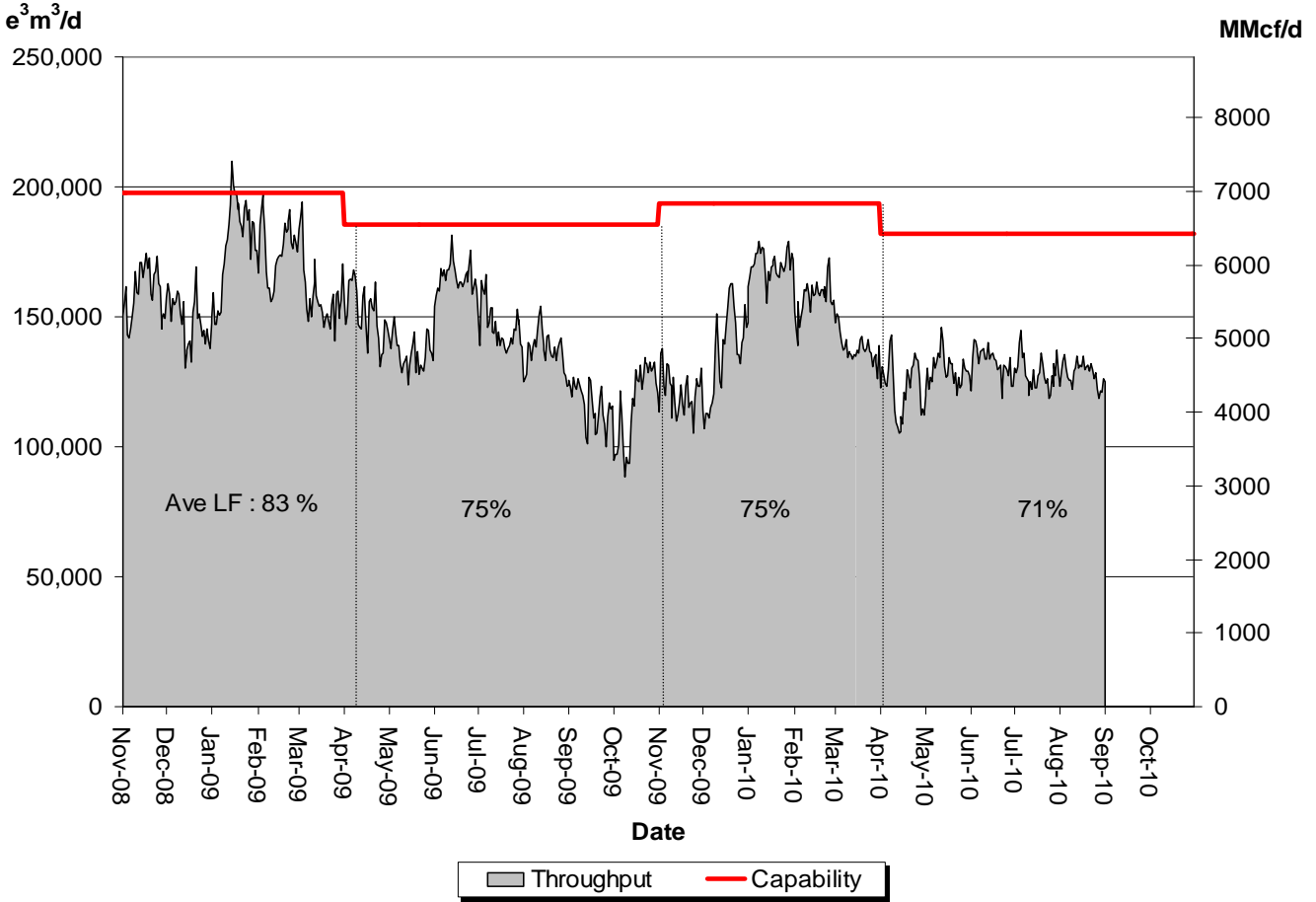
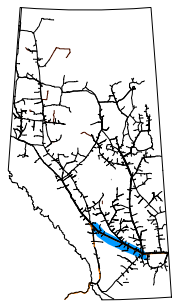
% Design Capability Utilization Monthly Average Actual Flow as a Percentage of Design Capability						
Average Flow/ Design Capability	Mar	Apr	May	Jun	Jul	Aug
	55	56	58	61	67	65

# DESIGN CAPABILITY UTILIZATION RIMBEY-NEVIS – FLOW WITHIN



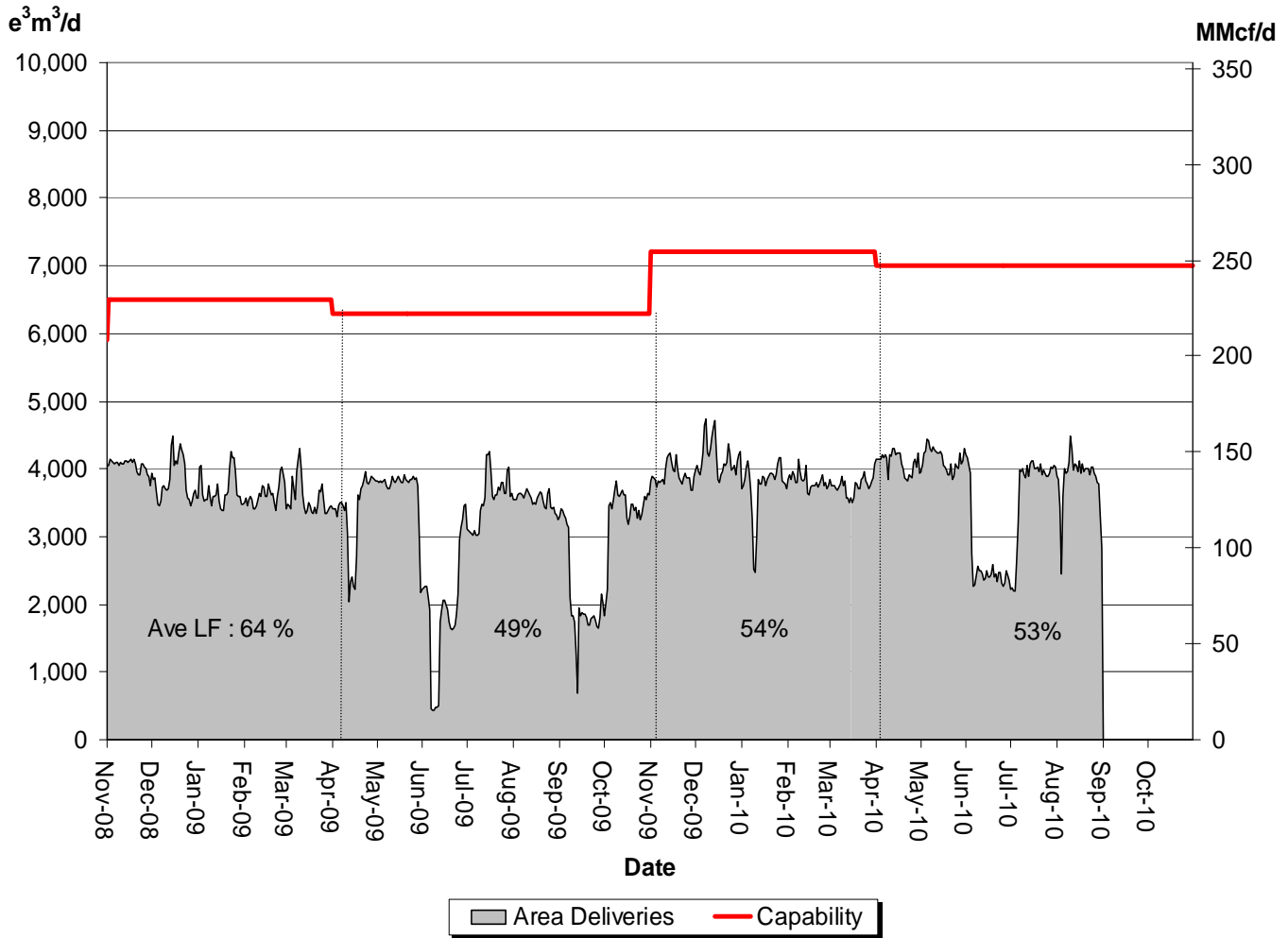
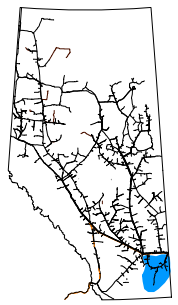
<b>% Design Capability Utilization</b> Monthly Average Area Deliveries as a Percentage of Design Capability						
Average Flow/ Design Capability	Mar	Apr	May	Jun	Jul	Aug
	44	38	34	19	20	22

# DESIGN CAPABILITY UTILIZATION EASTERN ALBERTA MAINLINE (James River to Princess)



% Design Capability Utilization Monthly Average Actual Flow as a Percentage of Design Capability						
Average Flow/ Design Capability	Mar	Apr	May	Jun	Jul	Aug
	71	68	71	73	71	71

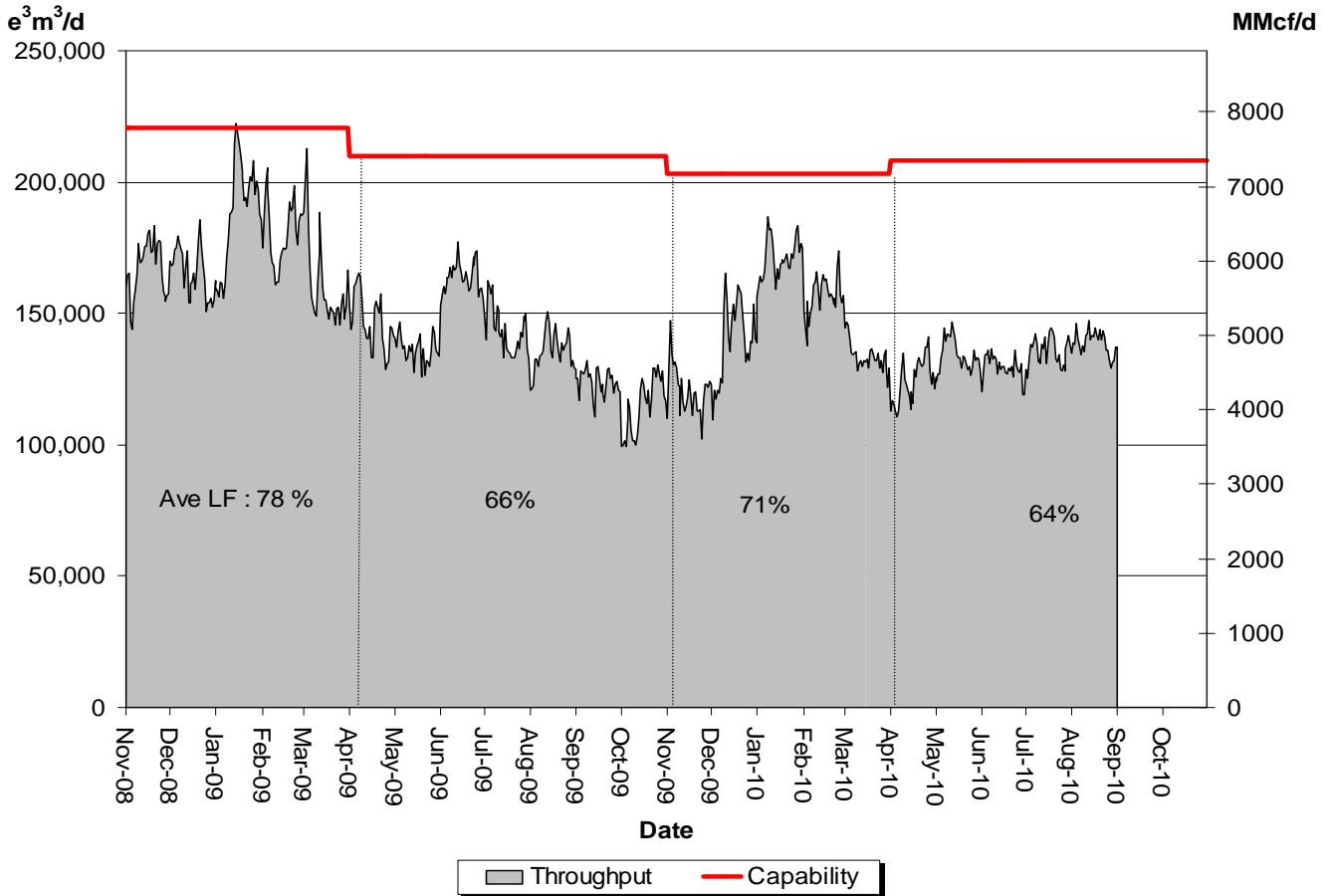
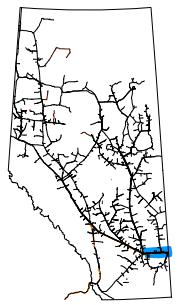
# DESIGN CAPABILITY UTILIZATION MEDICINE HAT – FLOW WITHIN



% Design Capacity Utilization						
Monthly Average Area Deliveries as a Percentage of Design Capacity						
Average Flow/ Design Capacity	Mar	Apr	May	Jun	Jul	Aug
	52	58	59	38	53	55

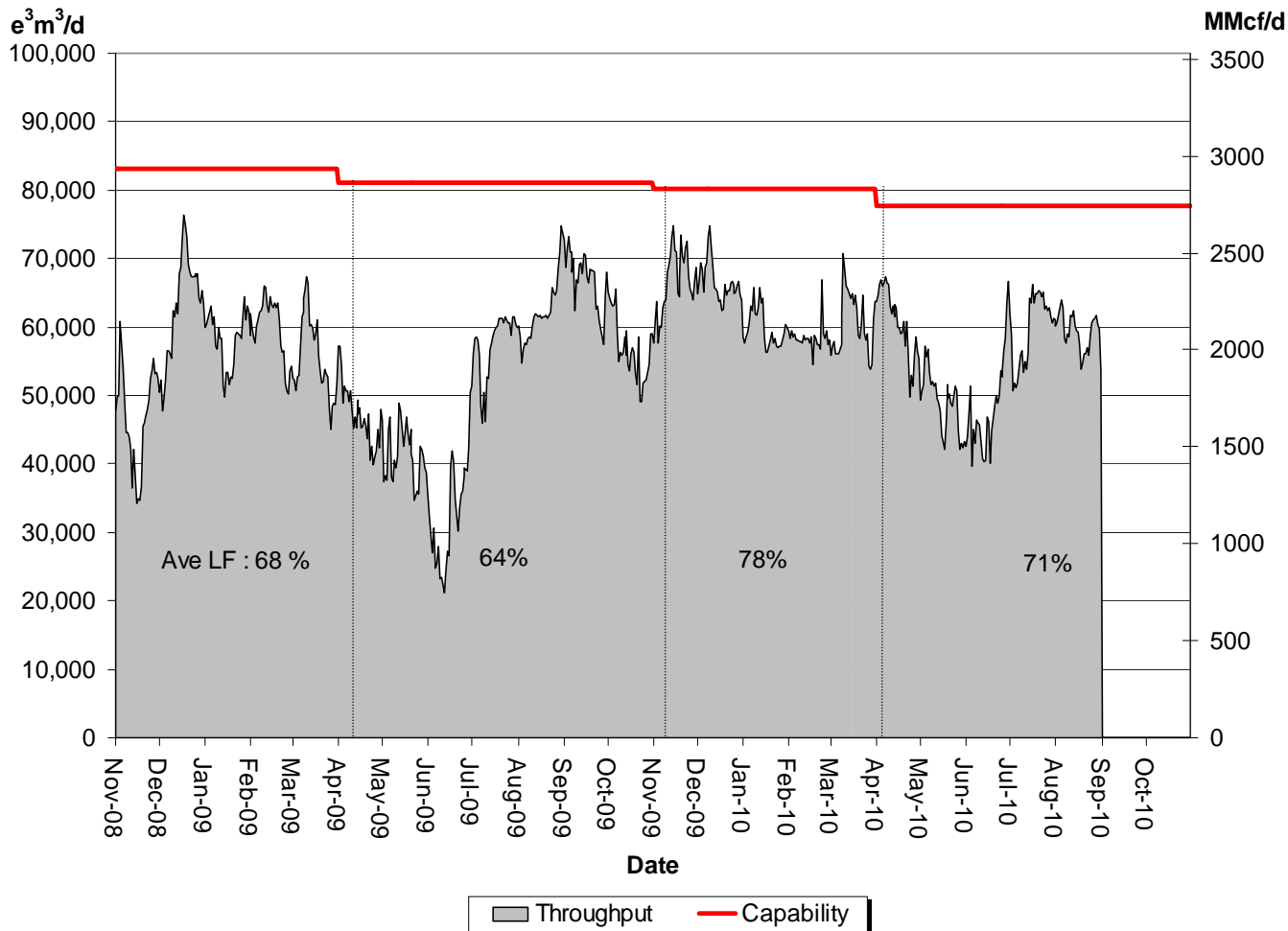
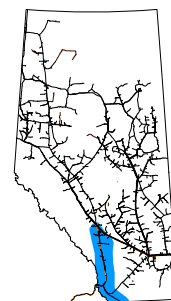
# DESIGN CAPABILITY UTILIZATION EASTERN ALBERTA MAINLINE

(Princess to Empress / McNeill)



<b>% Design Capability Utilization</b>						
Average Actual Flow as a Percentage of Design Capability						
Average Flow / Design Capability	Mar	Apr	May	Jun	Jul	Aug
	66	60	64	62	65	67

# DESIGN CAPABILITY UTILIZATION WESTERN ALBERTA MAINLINE (Alberta/B.C. and Alberta/Montana Borders)



% Design Capability Utilization Average Actual Flow as a Percentage of Design Capability						
Average Flow / Design Capability	Mar	Apr	May	Jun	Jul	Aug
	75	78	63	62	77	76



# HISTORICAL TRANSPORTATION SERVICE AVAILABILITY

June 1, 2010 to August 31, 2010 (3 Month Average)

Receipt Area	Segment	IT-R Service	Firm Service	Firm Service	% CD		Causes/Co
		Available	Available	Restriction	Restricted <sup>(1)</sup>		
		(% of time)	(% of time)	(% of time)	Max	Average	
Peace River	UPRM 1	100	100	0	0	0	
	PRL 2	100	100	0	0	0	
	NWML 3	100	100	0	0	0	
	GRDL 4	100	100	0	0	0	
	WAEX 5	100	100	0	0	0	
	JUDY 24	100	100	0	0	0	
	WRSY 26	100	100	0	0	0	
	LPRM 27	100	100	0	0	0	
	GPML 7	100	100	0	0	0	
Central	CENT 8	100	100	0	0	0	
	LPOL 9	100	100	0	0	0	
North & East Upstream of Bens Lake	LIEG 10	100	100	0	0	0	
	KIRB 11	100	100	0	0	0	
	MRTN 6	100	100	0	0	0	
	SMHI 12	100	100	0	0	0	
	REDL 13	100	100	0	0	0	
	COLD 14	100	100	0	0	0	
Downstream of Bens Lake	NLAT 15	100	100	0	0	0	
	ELAT 16	100	100	0	0	0	
	WAIN 23	100	100	0	0	0	
Rimbey/Nevis	ALEG 17	100	100	0	0	0	
Eastern Mainline	BLEG 18	100	100	0	0	0	
	EGAT 19	100	100	0	0	0	
	MLAT 20	100	100	0	0	0	
	SLAT 22	100	100	0	0	0	
Western Mainline	WGAT 21	100	100	0	0	0	

Borders	Available <sup>(2)</sup> (% of time)	IT-D Service	Firm Service	Firm Service	% CD Restricted <sup>(1)</sup>		Causes/Co
		Available <sup>(2)</sup>	Available	Restriction	Restricted <sup>(1)</sup>		
		(% of time)	(% of time)	(% of time)	Max	Average	
Empress/McNeill		100	100	0	0	0	
Alberta-BC		100	100	0	0	0	
Gordondale		100	100	0	0	0	

# FUTURE FIRM TRANSPORTATION SERVICE AVAILABILITY (MAINLINE RESTRICTIONS)

## Export Firm Transportation Guidelines

Firm Transportation Service Type	Authorize Firm Transportation Service By	To Ensure Firm Transportation Service By
Export Delivery	November 2010	November 2012

## Estimated Firm Transportation Service Availability

Please refer to the following web site for  
**current FT-R Availability Map:**

[http://www.transcanada.com/customerexpress/docs/ab\\_ftr\\_availability\\_map/external\\_map.pdf](http://www.transcanada.com/customerexpress/docs/ab_ftr_availability_map/external_map.pdf)

## Receipt Firm Transportation Guidelines

Firm Transportation Service Type	Authorize Firm Transportation Service By	To Ensure Firm Transportation Service By
Receipt - Summer construction (generally south of Edmonton)	November 2010	November 2012
Receipt - Winter construction (generally north of Edmonton)	November 2010	April 2013

- If your needs for firm transportation service arise after the above dates to “Authorize Firm Transportation Service By”, NGTL will evaluate your new receipt firm transportation service or firm service transfer requests on a date-stamped basis.

*Please consult with your Customer Sales Representative to discuss your Firm Transportation Service needs.*

# HOW TO USE THIS REPORT

---

## Overview

This report contains recent historical information on the level of utilization of firm transportation Service Agreements on the NGTL system, relative usage of interruptible service, level of utilization of design pipeline capacity, and the availability of transportation services as an indication of system reliability.

Data is reported either by *Pipeline Segment* (26 on the system) or *Design Area* (13 on the system). Maps of both are included in the reference section.

## Firm Transportation Service Contract Utilization

The Firm Transportation Service Contract Utilization report shows the percent utilization for each of the 26NGTL pipeline segments and 3 major export delivery points comprising the total system. The utilization data is based on billed monthly volumes. Percent utilization is calculated as firm transportation service and firm transportation service + interruptible service divided by applicable receipt or delivery contract level. Historical Data involving billed volumes lags the current date by approximately two months.

## Design Capability Utilization

The load factor/segment flow graphs show actual flow versus design capability values for various NGTL system areas. The graphs also show seasonal (winter/summer) design capability and average load factors for each season. Data used in these reports lags the current date by one month.

Design Flow Capability utilization is a function of several factors that include:

- Total market demand for Alberta natural gas.
- Seasonal changes in market demand for Alberta natural gas.
- Receipt nominating practices of customers individually and in aggregate to meet that level of demand.
- Effect of scheduled maintenance on actual flow requirement in a design area at any given time.
- Design assumptions used in determining required segment flow requirement.

# HOW TO USE THIS REPORT - continued

---

## **Historical Transportation Service Availability**

Transportation Service Availability is a system utilization measure that identifies the degree to which firm and interruptible transportation services are available on the NGTL system. It includes the historical frequency of service restriction experienced by the gas transmission network by service type and by pipeline segment.

The data shows the percentage of a given time period that a service type was available for a given section of the system. Service availability less than 100 percent means that some level of transportation service has been restricted for a portion of the time period.

Priority of transportation service on the NGTL system is firm transportation service, and then interruptible (IT). If transportation is restricted within a segment, all service within that segment of a lower priority will be affected.

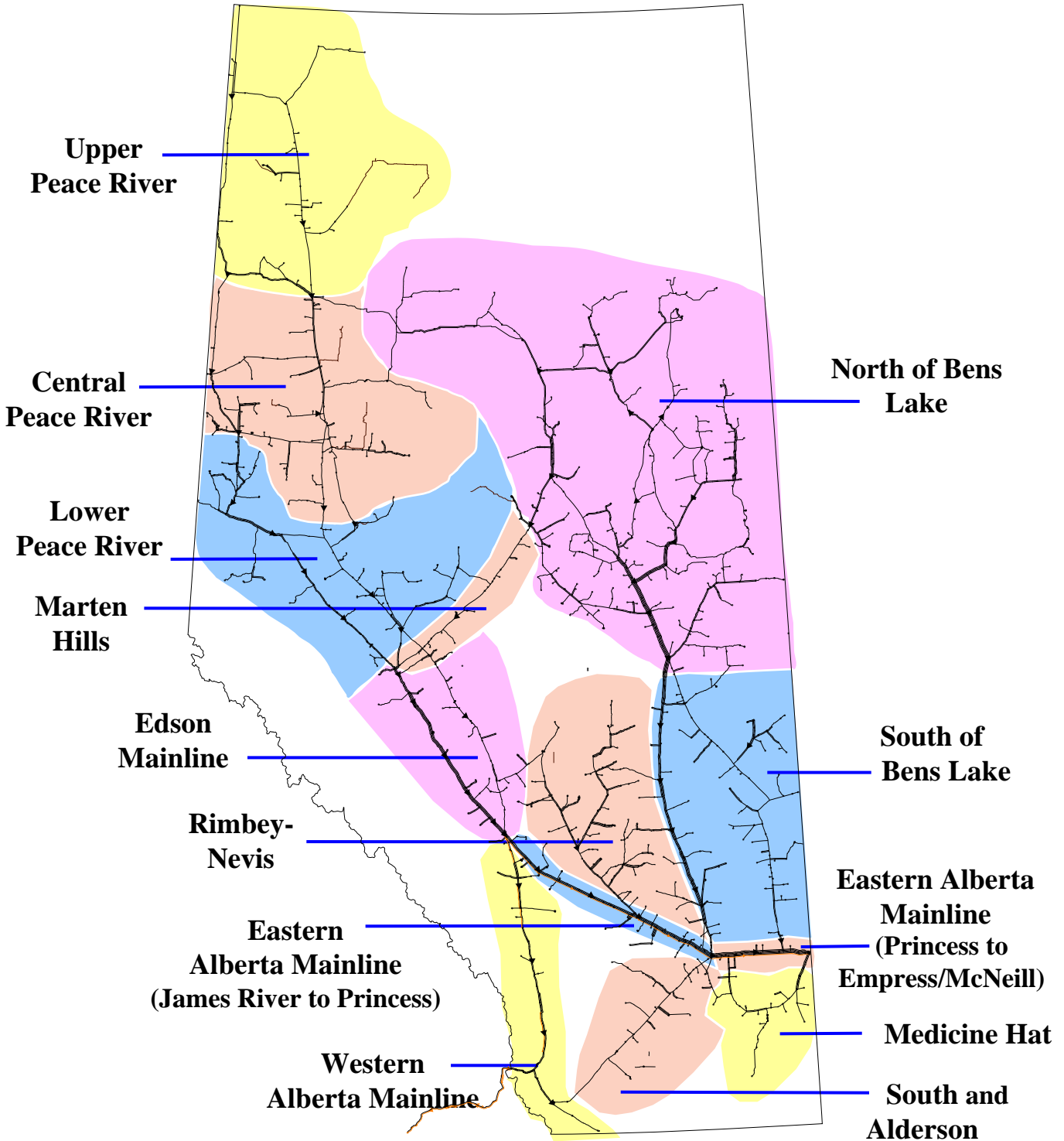
Service availability is affected by a number of factors including scheduled and unscheduled maintenance, construction or other outages.

As a monthly feature the Historical Transportation Service Availability is shown as a three-month rolling average of transportation availability.

## **Future Firm Transportation Service Availability**

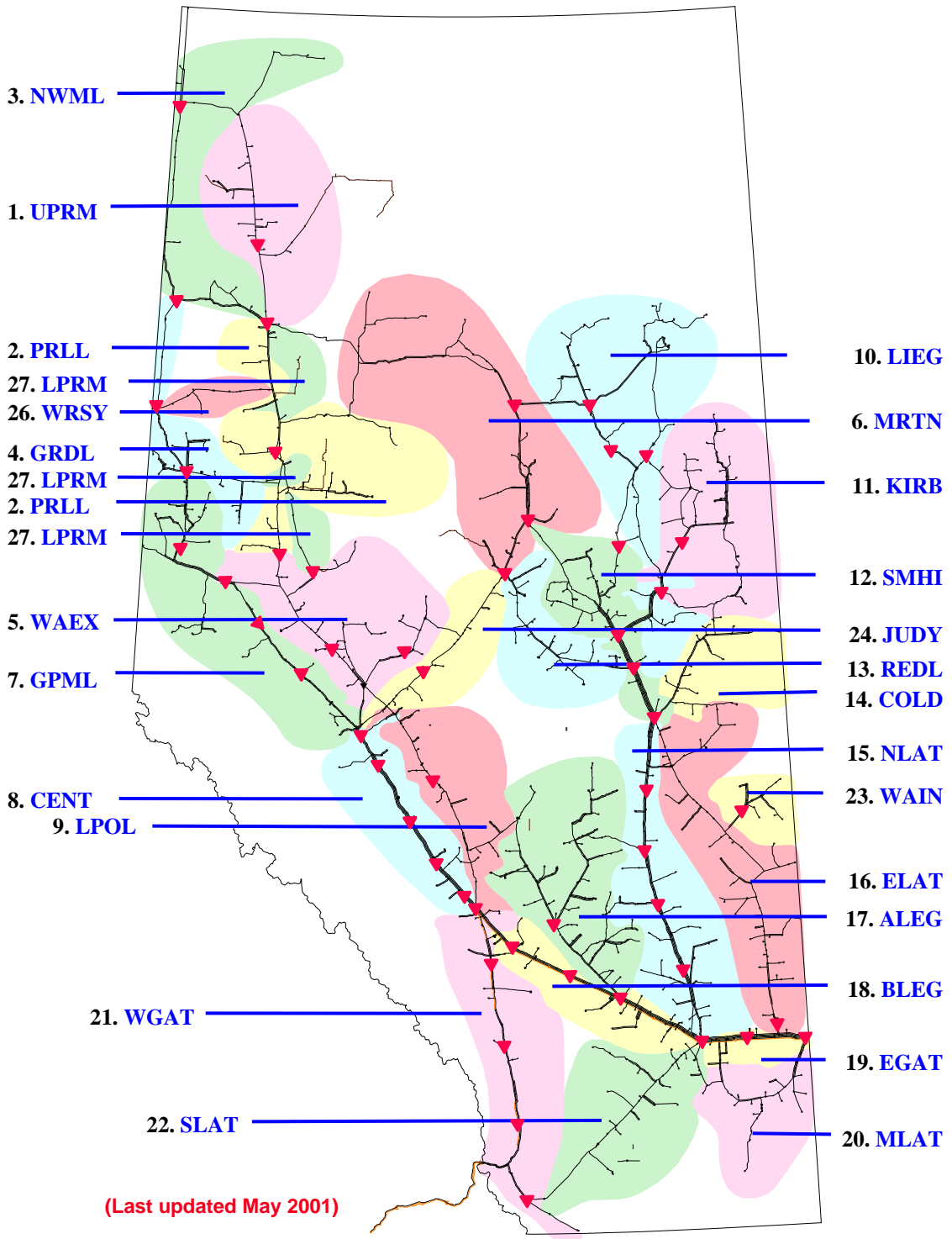
The Future Firm Transportation Service Availability report presents guidelines and timing for all future firm transportation service requests.

# NGTL DESIGN AREAS



(Last updated January 2007)

# NGTL PIPELINE SEGMENTS



# DEFINITION OF TERMS

---

## *Design Capability Utilization*

### ***Actual Flow***

The amount of gas flowing within or out of our design area.

### ***Design Capability***

The volume of gas that can be transported at various points on the pipeline system considering design assumptions.

### ***AVGLF (Average Load Factor)***

The ratio between average *Actual Flow* and *Design Capability*. It is calculated for every design season (summer/winter) as shown on the graphs.

### ***Intra-Alberta Deliveries***

The amount of sales gas flowing off the system within an area.

### ***Receipt Flow***

Aggregate of actual receipts within an area and the *Actual Flow* of the upstream area.

---

## *Historical Transportation Service Availability*

### ***Average % CD Restricted***

The average percentage of the entire segment receipt contract demand restricted during periods of restriction.

### ***Firm Service Available***

The percentage of time that all requested firm transportation service requests were transported within a segment.

### ***Firm Service Restriction***

Percentage of time firm service is restricted.

### ***IT-2 Service Available***

The percentage of time that IT-2 service requests were transported.

### ***Max % CD Restricted***

The maximum percentage to which the entire segment contract demand was restricted.

---

## ***Other***

### ***System Load Factor***

The volume weighted average of the *Average Load Factor (AVGLF)* of all design areas on the system